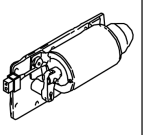
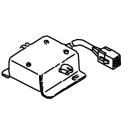
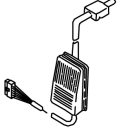
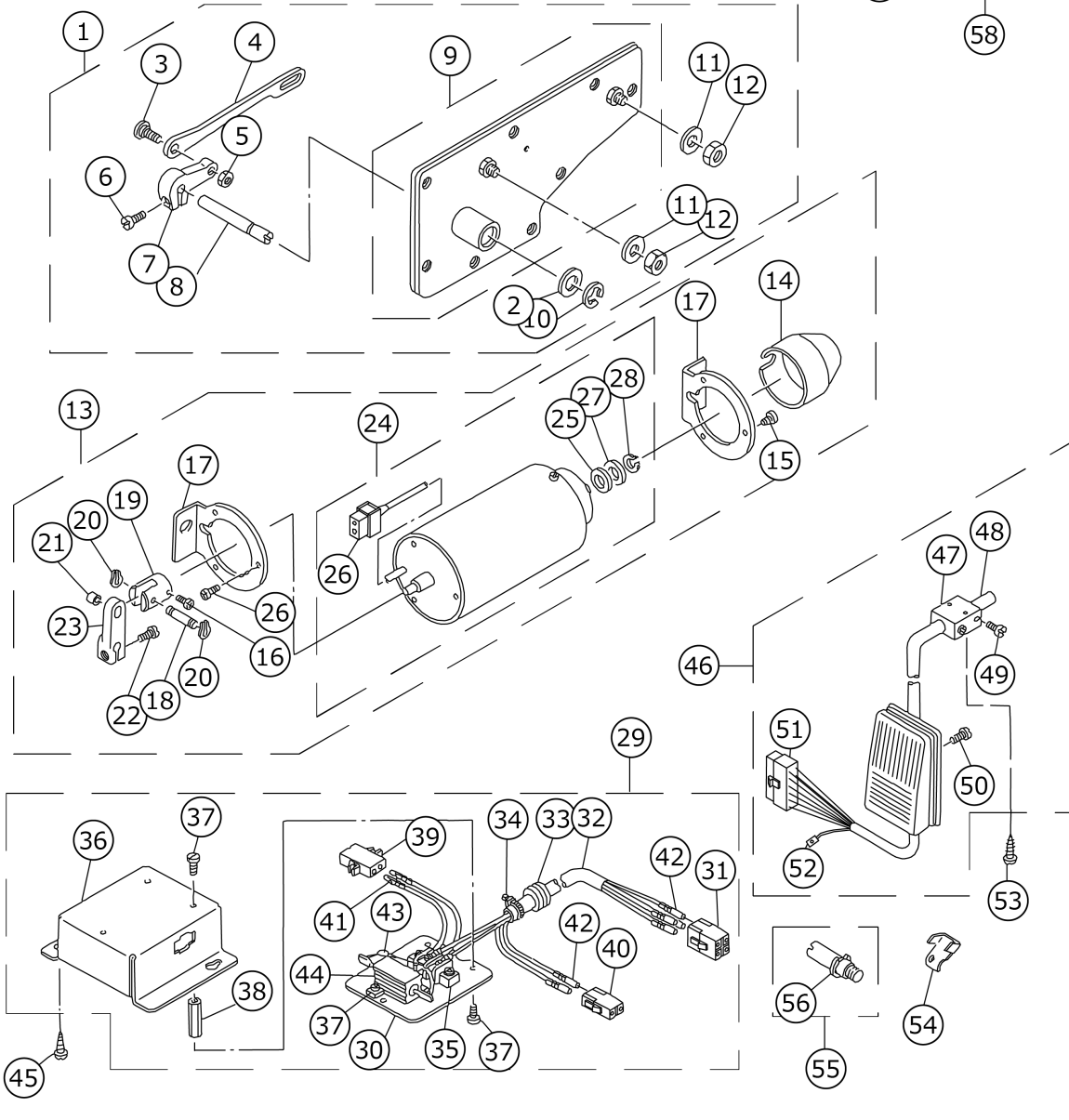
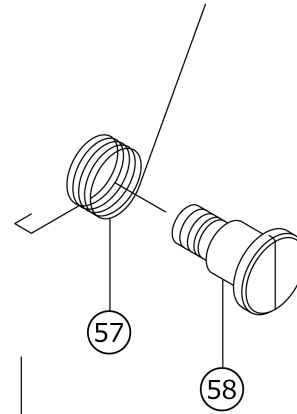


AK-84/AK-85/AK-86/AK-87

AK-84,85,86,87

TABLE OF UNIT COMBINATIONS ユニット組合せ表			
			
AK-84	○		○
AK-85	○		
AK-86	○	○	○
AK-87	○	○	



No.	品番	品名	備考	子部品	消耗品	個数
1	GAK330200BA	SIDE PLATE ASM. B				1.00
2	WP1021016SD	WASHER		*		1.00
3	SD0800352SP	HINGE SCREW D= 8 H= 3.5		*		1.00
4	GAK33026000	SOLENOID LINK		*		1.00
5	NS6150310SP	NUT 15/64-28		*		1.00
6	SS6121210SP	SCREW 3/16-28 L=12		*		1.00
7	GAK33027000	SOLENOID ARM		*		1.00
8	GAK33028000	SOLENOID SHAFT		*		1.00
9	GAK330200AA	SIDE PLATE ASM. A		*		1.00
10	RE0700000K0	E-RING 7		*		1.00
11	WP0621036SP	WASHER		*		2.00
12	NS6150440SP	NUT 15/64-28		*		2.00
13	GAK840300BA	AK SOLENOID ASM. B				1.00
14	GAK3303600A	SOLENOID COVER		*		1.00
15	SS4120915SP	SCREW 3/16-28 L=9		*		6.00
16	SS4110915SP	SCREW 11/64-40 L=9		*		1.00
17	GAK3303400A	SOLENOID BASE		*		2.00
18	GAK33012000	SOLENOID PIN		*		1.00
19	GAK33035000	SOLENOID COLLAR		*		1.00
20	GAK33014000	SNAP RING		*		2.00
21	GAK33013000	SOLENOID PIN COLLAR		*		1.00
22	SS7121610SP	SCREW 3/16-28 L=15.5		*		1.00
23	GAK33011000	SOLENOID ARM, A		*		1.00
24	GAK840300AA	AK SOLENOID ASM. A		*		1.00
25	GAK33031000	SOLENOID RUBBER, A		*		1.00
26	HK034610020	2-POLE NYLON PLUG		*		1.00
27	WP1052000SC	WASHER 10.5X18X2		*		1.00
28	RC0931011KP	RETAINING RING		*		1.00
29	GAK860500A0	FLY BACK RESISTOR ASM.				1.00
30	GAK33051000	RESISTOR BASE		*		1.00
31	HK034610040	HOUSING		*		1.00
32	HW5F18S1248	4-CORE CABTYRE CORD		*		0.70
33	M1014110000	CORD BUSH B		*		1.00
34	HX000430000	CLIP		*		1.00
35	GAK01015000	2P TERMINAL BASE		*		1.00
36	GAK86050000	RESISTOR COVER		*		1.00
37	SM4030601SE	SCREW M3 L=6		*		8.00
38	GAK33052000	STUD		*		3.00
39	MAI15041000	NYLON RECEPTACLE 2P		*		1.00
40	HK034620020	2P PLUG		*		1.00
41	D6042555B00	PIN TERMINAL, FEMALE		*		2.00
42	HK034630000	TERMINAL		*		6.00
43	HG26740147P	DIODE IN5625		*		1.00
44	HR003601000	RESISTOR 10 OHM 20W		*		1.00
45	SK3412000SC	WOOD SCREW D=4.1 L=20				1.00
46	GAK840900B0	LIFTER KNEE SWITCH ASM. B				1.00
47	MAT80230T00	KNEE SWITCH SUPPORT BASE		*		2.00
48	MAT80231T00	DRIVING BAR, T002		*		1.00
49	SS6151220SP	SCREW 15/64-28 L=11.5		*		4.00
50	SS7111410SP	SCREW 11/64-40 L=14		*		2.00

51	HK048910120	HOUSING		*		1.00
52	HK049240000	PIN-SHAPE TERMINAL		*		2.00
53	SK3514000SC	WOOD SCREW D=5.1 L=40				2.00
54	GAK33060000	CORD HOLDER				1.00
55	GAK330400A0	SHAFT PIN ASM.				1.00
56	RE0500000K0	E-RING		*		1.00
57	GAK33042000	KNEE LIFTING LINK SPRING				1.00
58	GAK33041000	KNEE LIFTING LINK STEP-SCREW				1.00

HOW TO MAKE USE OF THIS PARTS LIST

1.As to "#01" and "#02" refer to the "Note" given at the bottom of the respective pages.

2.Codes on the "Qty" column

- Each numeral indicates the number of parts required.
- "0.1" and "2.5" indicate the length (in meters) of the respective parts.

3.Parentheses mean that the corresponding part is a subpart that constructs an assembly part.

4.Dotted lines on the Figures indicate assembly parts.

1. リストページの# 0 1、# 0 2の印は、ページ下の"注記"の説明を参照下さい。

2. 数量欄の数字は、個数を表し、0. 1、2. 5等の数値は、長さ（単位メートル）を表します。

3. 数量欄の（ ）は、組部品を構成している子部品であることを意味します。

4. イラストページの-----枠は、組構成であることを意味します。