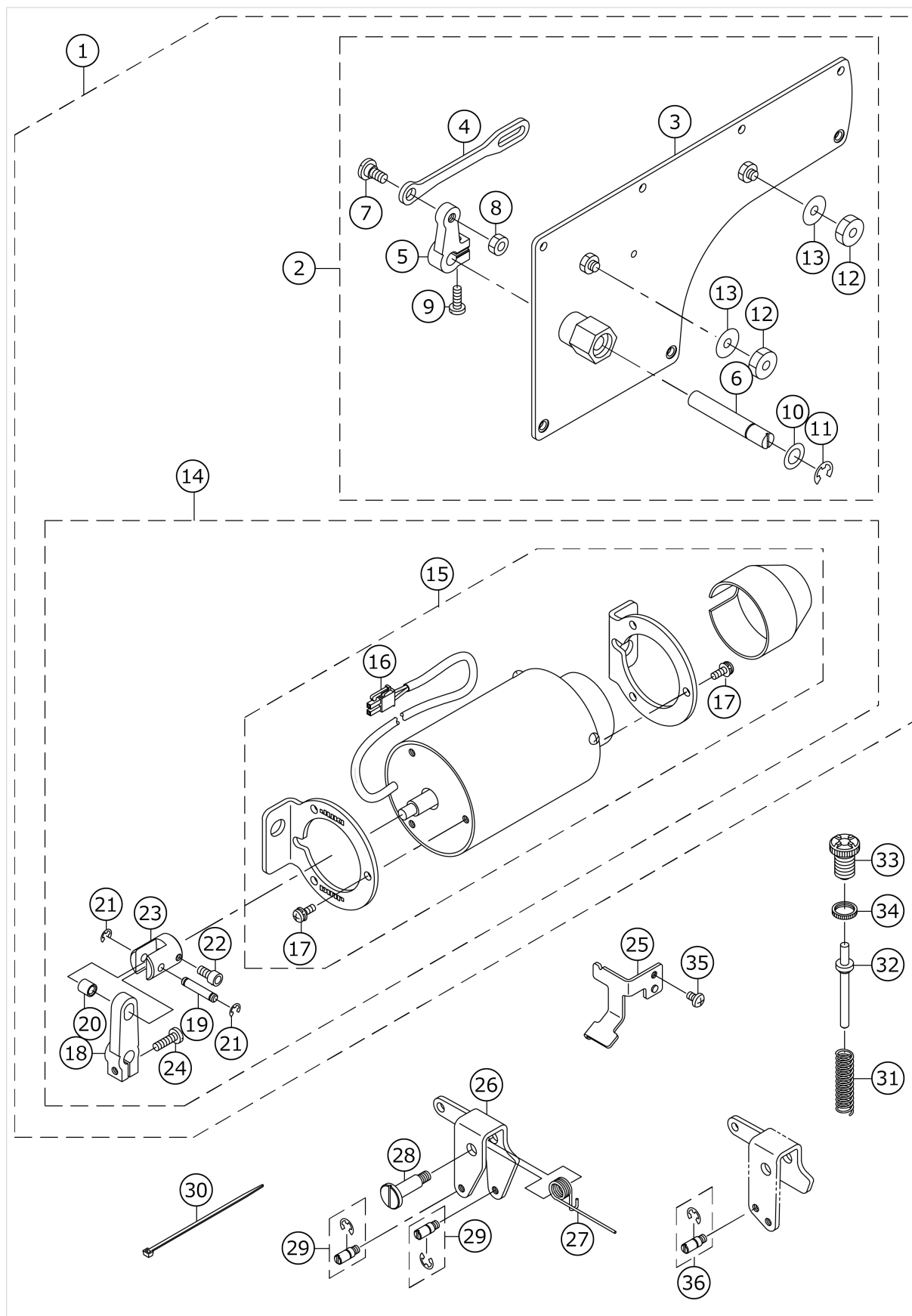


AK118

AK118



No.	品番	品名	備考	子部品	消耗品	個数
1	GAKA18010A0	AK DEVICE ASM.				1.00
2	GAKA18200B0	SIDE PLATE ASM.		*		1.00
3	GAKA18200A0	SIDE PLATE COMPL.		*		1.00
4	GAKA1826000	SOLENOID LINK		*		1.00
5	GAK33027000	SOLENOID ARM		*		1.00
6	GAK33028000	SOLENOID SHAFT		*		1.00
7	SD0800352SP	HINGE SCREW D=8 H=3.5		*		1.00
8	NS6150310SP	NUT 15/64-28		*		1.00
9	SS7121410SP	SCREW 3/16-28 L=14		*		1.00
10	WP1021016SD	WASHER		*		1.00
11	RE0700000K0	E-RING 7		*		1.00
12	NS6150440SP	NUT 15/64-28		*		2.00
13	WP0621036SP	WASHER		*		2.00
14	40101423	AK SOLENOID ASM. B		*		1.00
15	40090289	AK SOLENOID ASM.		*		1.00
16	HK034610020	2-POLE NYLON PLUG		*		1.00
17	SL4041091SE	SCREW M4 L=10		*		6.00
18	GAK33011000	SOLENOID ARM A		*		1.00
19	GAK33012000	SOLENOID PIN		*		1.00
20	GAK33013000	SOLENOID PIN COLLAR		*		1.00
21	RE0400000KP	E-RING 4		*		2.00
22	SM6051002TP	SCREW M5X0.8 L=10		*		1.00
23	GAK33035000	SOLENOID COLLAR		*		1.00
24	SM6051552TP	SCREW M5 L=15		*		1.00
25	GAKA1840000	KNEE LIFTER LINK SPRING PLATE	FOR DDL-9000			1.00
26	GAKA1841000	KNEE LIFTER LINK	FOR DDL-9000			1.00
27	GAKA1842000	KNEE LIFTER LINK SPRING				1.00
28	GAKA1843000	KNEE LIFTER LINK FULCRUM SHAFT	FOR DDL-9000			1.00
29	GAK330400A0	SHAFT PIN ASM.	FOR DDL-9000			2.00
30	HX000430000	CLIP				1.00
31	M4011351000	SPRING B				2.00
32	M4009351000A	SPRING SHAFT B				1.00
33	M4012351000	ADJUST SCREW				1.00
34	M2010110000	ADJUST NUT				1.00
35	SS4110715SP	SCREW 11/64-40 L=7	FOR DDL-9000			1.00
36	GAK330400A0	SHAFT PIN ASM.	FOR DLN-9010/9010A			1.00

# HOW TO MAKE USE OF THIS PARTS LIST

1.As to "#01" and "#02" refer to the "Note" given at the bottom of the respective pages.

2.Codes on the "Qty" column

- Each numeral indicates the number of parts required.
- "0.1" and "2.5" indicate the length (in meters) of the respective parts.

3.Parentheses mean that the corresponding part is a subpart that constructs an assembly part.

4.Dotted lines on the Figures indicate assembly parts.

1. リストページの# 0 1、# 0 2の印は、ページ下の"注記"の説明を参照下さい。

2. 数量欄の数字は、個数を表し、0. 1、2. 5等の数値は、長さ（単位メートル）を表します。

3. 数量欄の（ ）は、組部品を構成している子部品であることを意味します。

4. イラストページの-----枠は、組構成であることを意味します。