

KATALOG
CATALOG



Aparat / Attachment



Dikiş Seti / Gauge Set



Sistemler / Systems

**Uar Makina, bu katalogda belirtilen aparat model ve lulerini dilediđi zaman deđiřtirme hakkını saklı tutar.
All information including attachment model and sizes in this catalogue are subject to change without notice.**

© Her Hakkı Saklıdır. Bu katalog iinde yayınlanan btn fotođrafların, grafiklerin ve yazıların hakları saklıdır. Tamamen, kısmen veya deđiřtirilerek dahi olsa, izinsiz ve kaynak gsterilmeden hibir yazılı ve dijital medyada yayınlanmaz, ođaltılamaz ve dađıtılamaz.

© All rights reserved. No part of this publication may be reproduced, distributed, or transmitted in any form or by any means, including photocopying, recording, or other electronic or mechanical methods, without the prior written permission of Uar Makina.



Tekstil ve hazır giyim sektörüne yardımcı ekipmanlar üretmek üzere kurulan Uçar Makina, 1988'den beri faaliyetlerini sürdüren bir aile şirkettir.

Türkiye ve dünya ülkelerine UMA markası adı altında birçok ürün geliştirip, üretmek sektöründe önemli bir yere gelmiştir.

Uzun yıllar boyunca hazır giyim sektörüne aparat üretimi yapan firmamız, 2000'li yılların başında ürün çeşitliliğini arttırmış olup; özel yedek parçalar, pnömatik-elektronik sistemler ve otomasyon üretimi yapmaktadır.

Bu ürünlerin AR-GE çalışması yada yeniden tasarlanarak geliştirilmesi konusunda önemli adımlar atılmıştır.

Firmamız; 1.000 metrekarelik kapalı alan üzerinde 5 ton ile 60 ton kapasiteler arasında presler, sac kesme ve büküm, üniversal freze ve torna, tel erezyon, dik ve yatay cnc işleme merkezleri, lazer kesim ve lazer markalama ile geniş bir makina parkuruna sahiptir.

1988'den beri amacımız kalite ve hizmette en iyi olanı yakalamak olmuştur. Size ulaşan tüm ürünlerimiz titiz ve deneyimli ellerin, çağımız teknolojisi ile birleşerek ortaya çıkardığı ürünlerdir.

Temiz, düzgün, hızlı ve kaliteli dikişi hedefleyerek sektörümüzde ilk ve tek seçeneğe olduğumuza inancımız tamdır.



UÇAR factory is as specifically designed for the manufacture of folders, guides and attachments, with "UMA" trade mark. UÇAR has sales attachments to many countries around the world.

Whilst we have endeavoured to include as wide a range as possible in this catalogue, it only represent a small proportion of our total capability.

We can manufacture a high quality folder, guide or attachment to your exact and specific requirements- always extremely quickly.

Our extensive and unequalled knowledge means that we can often develop 'specials' for your specific purpose and there is always an expert on hand to advise or offer further assistance on any matter if required.

أننا في شركة UÇAR نختص بصناعة الكفافات لجميع أنواع ماكينات الخياطة الصناعية بإسم : (UMA) وهي ذات مستوى عالي من حيث الجودة والدقة في العمل وطبقا للقياسات العالمية المعتمدة لدى كافة أنحاء العالم .
وبكل تواضع نقدم لكم هذا الكتوك الذي يحتوي معظم منتجاتنا لكافة الأختصاصات .
وكل هذا ليسهل عملكم ويوفر وقتكم وجهدكم ليحسن منتجاتكم ضمن القياسات المواصفات المطلوبة لديكم لتكونوا الأفضل دائما .
لسنا الوحيدين ولكننا الأفضل

La fabbrica di UÇAR è come specificatamente disegnata per il fabbrica di cartelle, le guide e gli attaccamenti, col marchio di mestiere di "UMA". UÇAR ha degli attaccamenti di vendite a molti paesi intorno il mondo.

Il Whilst che abbiamo sforzato includere come largo una serie come possibile in questo catalogo, rappresenta soltanto una proporzione piccola della nostra capacità totale. Noi può fabbricare un alto qualità, guida o attaccamento al suo esatto e specifico requisiti-sempre estremamente velocemente.

Il nostro ed unequalled conoscenza che noi spesso può sviluppare "speciale" per il suo specifico e c'è sempre una consigliere o offre ulteriori su qualunque se richiesto.

Фабрика (УЧАР)занимается производством приспособлений для подгибки и окантовки швейных изделий.Эти приспособления имеют маркировку (UMA). Фабрика (УЧАР) продает приспособления во многие строаны мира. Приспособления,указанные в каталоге, отображают лишьнебольшую часть наших Производственных возможностей.
Мы можем изготавливать и специальные приспособления быстро и по вашему заданию.
Наши обширные знания в области приспособлений позволяют предложить особые Приспособления для ваших специфических целей. Мы имеем специалистов, которые всегда посоветуют покупателю, что выбрать на нашем складе, как зависит от материала вид прспособления.

Fabrica UÇAR este in mod special desemnata pentru fabricarea de pliante, modele, ataşamente, purtând marca UMA.

UÇAR a vândut ataşamente in mai multe tari din intreagă lume.

Whilst ne-am straduit sa includem un sortiment cât mai mare in acest catalog, pentru a reprezenta o mica proportie a capacitatii noastre totale.

Petum fabrica pliante de inalta calitate, modele si ataşamente la cererea exacta si precisa a dumneavoastra, intotdeauna intr-un timp extrem de scurt.

Vasta noastra cunoaştere, fara de seaman, inseamnă că putem adesea face oferte speciale, si veti gasi mereu la noi un expert in masura sa va sfatuiasca ori de asemenea sa va ofere asistenta indiferent de cerere.

İÇİNDEKİLER / CONTENTS

SİSTEMLER / SYSTEMS ■	1-7
DİKİŞ SETLERİ / GAUGE SETS ■	8-10
ÇARDAKLAR / TAPE RACKS ■	11
SİPERLER / GUIDES ■	12
PENYE / KNITWEAR ■	13-36
GÖMLEK / SHIRT ■	37-50
KOT, PANTOLON / JEANS, TROUSERS ■	51-70
İÇ GİYİM / UNDERWEAR ■	71-77
ŞAPKA / CAP ■	78-79
EV TEKSTİLİ / HOME TEXTILE ■	80-85
AMBALAJ, DERİ, DÖŞEME ■ PACKING, LEATHER, UPHOLSTER	86-89
TELA PRESİ / FUSING PRESS ■	90-91

KATALOG KULLANIM ŞEKLİ / HOW TO USE CATALOG

Ürün Kodu
Product Code

Ürün Adı
Product Name

Kullanım Alanı
Kind of Work

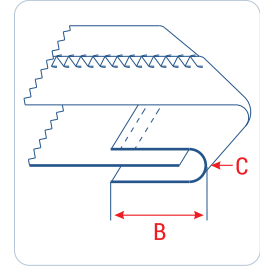
Ürün Kategorisi
Product Category

Kumaş Kıvrım Şekli
Technical Drawing

UMA-02

Biye İkiye Katlama Aparatı

Raw Edge Collarete Binder



Makina / Machine :
Bant Reçme Makinası
Coverstitch Machine for Tape Binding

A	12	14	15	16	18	20	22	25	28	30	32	35	40	45	50	55	60
B	6	7	7,5	8	9	10	11	12,5	14	15	16	17,5	20	22,5	25	27,5	30
C	M																

Aparat Fotoğraf
Attachment Drawing

Uyumlu Olduğu Makina
Compatible Machine

Ürün Ölçüleri
Product Sizes

L : 1.5 mm

M : 2 mm

MH : 2.2 mm

H : 2.5 mm

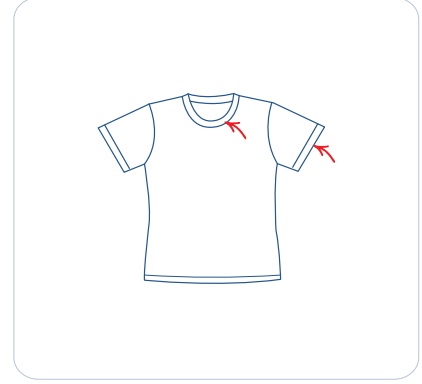
XH : 3 mm

Inch	m.m.
0.397	1/64"
0.794	1/32"
1.191	3/64"
1.587	1/16"
1.984	5/64"
2.381	3/32"
2.776	7/64"
3.175	1/8"
3.572	9/64"
3.959	5/32"
4.366	11/64"
4.762	3/16"
5.159	13/64"
5.556	7/32"
5.953	15/64"
6.350	1/4"
6.747	17/64"
7.144	9/32"
7.541	19/64"
7.937	5/16"
8.334	21/64"
8.731	11/32"
9.128	23/64"
9.525	3/8"
9.922	25/64"
10.32	13/32"
10.72	27/64"
11.11	7/16"
11.51	29/64"
11.91	15/32"
12.30	31/64"
12.70	1/2"
13.49	17/32"
14.29	9/16"
15.08	19/32"
15.87	5/8"
16.67	21/32"
17.46	11/16"
18.26	23/32"
19.05	3/4"
19.84	25/32"
20.64	13/16"
21.43	27/32"
22.22	7/8"
23.02	29/32"
23.81	15/16"
24.61	31/32"
25.40	1"

UMA-BV-16-03

Biye Tansiyon Sistemi

Tension Controlled Tape Feeder

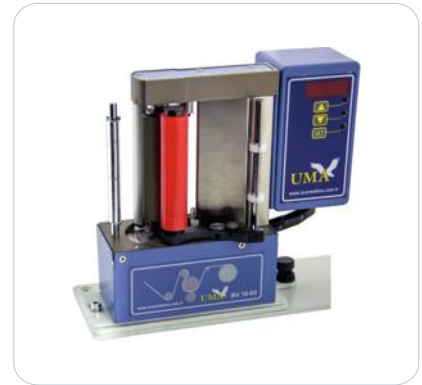


- Elektronik tansiyon kontrollü biye besleme sistemi.
- Lastik ve biyeyi, bol yada gergin besleme.
- Hassas kontrol özelliği ile esnek biyeler için ideal çözüm.
- Makina ile mekanik bir bağlantısı yoktur. Yalnızca elektrik bağlantısı ile çalışır.
- Üstten ve yandan montaj edilme özelliği.
- Tüm dikiş makinaları ile uyumlu ve kolay montaj edilebilir.

- Tape feeding by electronic tension control.
- Tape and elastic feeding as tight or loose.
- There is not mechanic connection with machine. It needs electricity only.
- It can be mounted side or top.
- Compatible with all sewing machines.



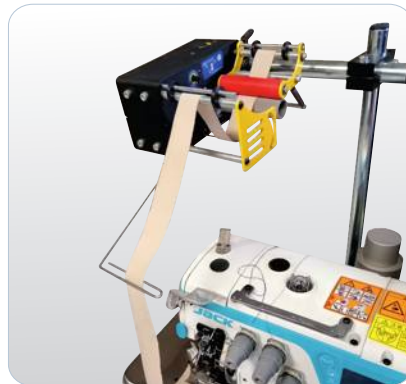
VIDEO



UMA-BS-19-01

Biye Sağıcı

Tape Feeder

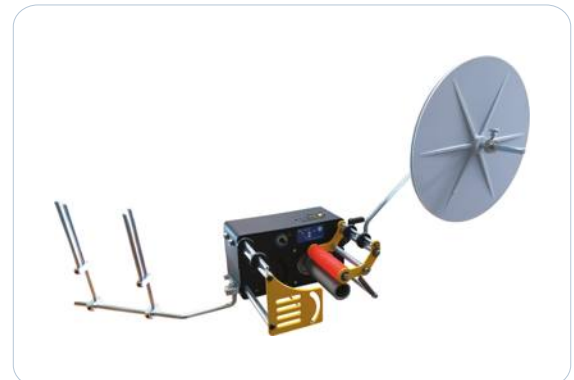


- Elektronik biye sağma sistemi.
- Makina ile mekanik bir bağlantısı yoktur. Yalnızca elektrik bağlantısı ile çalışır.
- Üstten ve yandan montaj edilme özelliği.
- Tüm dikiş makinaları ile uyumlu ve kolay montaj edilebilir.

- Tape feeding system.
- There is not mechanic connection with machine. It needs electricity only.
- It can be mounted side or top.
- Compatible with all sewing machines.



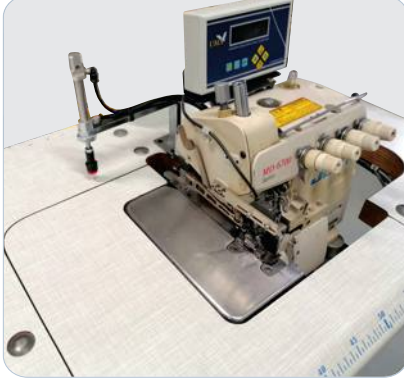
VIDEO



UMA-F-02-03

Pnömatik Makaslı Overlok Biye ve Zincir Kesme Sistemi

Pneumatic Scissor Type Chain and Tape Cutter



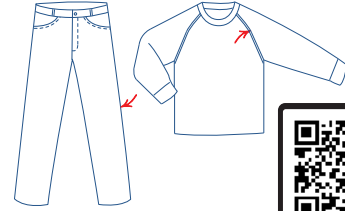
- İş başlangıcında ve bitiminde otomatik olarak zincir ve biyeyi keser.
- İplik ve biye firesini vakumlar.
- Vakum süresi ayarlanabilir.
- İplik ve biye sarfiyatını düşürür.
- İş gücü tasarrufu sağlar.
- Üretimi hızlandırır ve kalite standardını yükseltir.
- İş güvenlik standartlarına uygun şekilde tasarlanmıştır.
- Fonksiyonel ve kolay kullanılabilir kontrol paneli.
- Buton yada dizlik ile birlikte manuel kullanılabilir. (Bu versiyonda kontrol paneli ve vakum bulunmaz.)
- Set içeriği; kontrol paneli, elektronik ve pnömatik ekipmanlar, kesici mekanizma.

- Automatic chain and tape cut before and end of piece.
- Vacuum waste of chain and tape.
- Vacuum timing can be adjusted.
- Reduce thread and tape consumption.
- Saving from manpower.
- Speed up production and increase quality standards.
- Designed on work safety standards.
- Functional and easy to use control panel.
- There are button and knee operated versions. (There is not control panel and vacuum for those versions.)
- Set includes; control panel, electronic and pneumatic equipment, cutter mechanism.

Uyumlu Makinalar / Compatible Machines

•Overlok Makinası
Overlock Machine

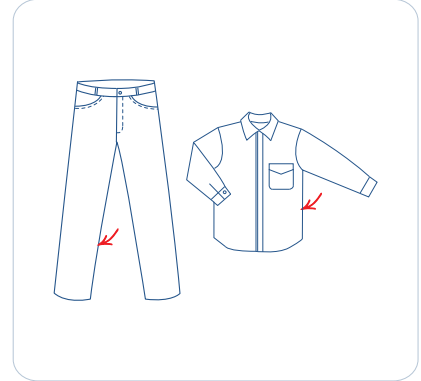
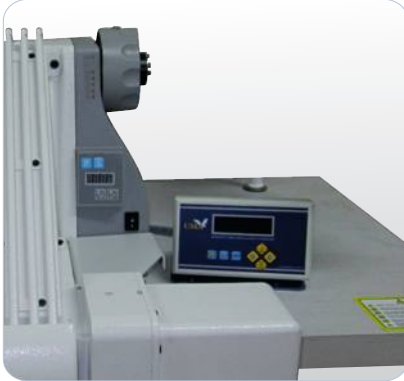
Brother, Yamato, Siruba, Juki, Pegasus



UMA-F-04

Pnömatik Kollu Zincir Kesme Sistemi

Pneumatic Chain Cutter for Feed of the Arm



- İş başlangıcında ve bitiminde otomatik olarak zinciri keser.
- Zincir firesini vakumlar.
- Vakum süresi ayarlanabilir.
- Zincir sarfiyatını düşürür.
- İş gücü tasarrufu sağlar.
- Üretimi hızlandırır ve kalite standardını yükseltir.
- İş güvenlik standartlarına uygun şekilde tasarlanmıştır.
- Fonksiyonel ve kolay kullanılabilir kontrol paneli.
- Set içeriği; kontrol paneli, elektronik ve pnömatik ekipmanlar, kesici mekanizma, vakum sistemi.

- Automatic chain and tape cut before and end of piece.
- Vacuum waste of chain.
- Vacuum timing can be adjusted.
- Reduce thread consumption.
- Saving from manpower.
- Speed up production and increase quality standards.
- Designed on work safety standards.
- Functional and easy to use control panel.
- Set includes; control panel, electronic and pneumatic equipment, cutter mechanism.

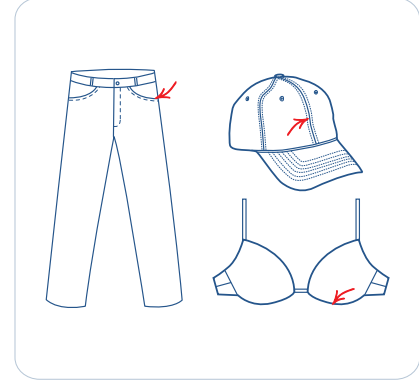
Uyumlu Makinalar / Compatible Machines

•Kollu Makinası

Feed off the Arm Machine

Brother, Juki, Union, Vibemac, Sip Italy



UMA-F-09
Pnömatik Biye Kesme Sistemi
Pneumatic Tape Cutter


- İş başlangıcında ve bitiminde otomatik olarak zincir ve biyeyi keser.
- İplik ve biye firesini vakumlar. (Opsiyonel)
- Vakum süresi ayarlanabilir.
- İplik ve biye sarfiyatını düşürür.
- İş gücü tasarrufu sağlar.
- Üretimi hızlandırır ve kalite standardını yükseltir.
- İş güvenlik standartlarına uygun şekilde tasarlanmıştır.
- Fonksiyonel ve kolay kullanılabilir kontrol paneli.
- Buton yada dizlik ile birlikte manuel kullanılabilir. (Bu versiyonda kontrol paneli ve vakum bulunmaz.)
- Set içeriği; kontrol paneli, elektronik ve pnömatik ekipmanlar, kesici mekanizma.

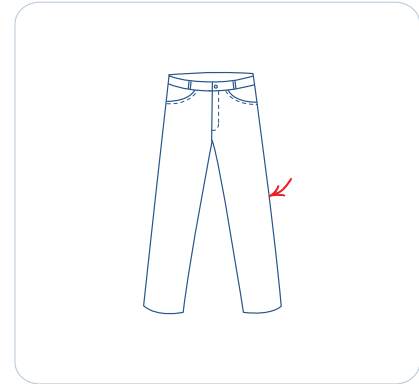
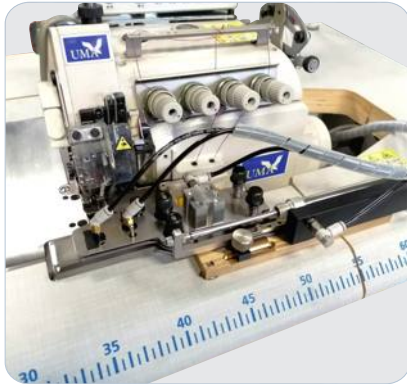
- Automatic chain and tape cut before and end of piece.
- Vacuum waste of chain and tape. (Optional)
- Vacuum timing can be adjusted.
- Reduce thread and tape consumption.
- Saving from manpower.
- Speed up production and increase quality standards.
- Designed on work safety standards.
- Functional and easy to use control panel.
- There are button and knee operated versions. (There is not control panel and vacuum for those versions.)
- Set includes; control panel, electronic and pneumatic equipment, cutter mechanism.

Uyumlu Makinalar / Compatible Machines

- Reçme Makinası
Coverstitch Machine
- Çift İğne Makinası
Two Needle Machine



VIDEO

UMA-F-16
Pnömatik Pantolon Yan Dikiş Sistemi
Pneumatic Edge Guide


- Pnömatik siprleme ile kenarların eşit ve düzgün birleştirilmesini sağlar.
- Paçalardaki dönme problemini engeller.
- Dikiş kalitesini artırır ve üretimi hızlandırır.
- Kolay kullanımı sayesinde makina kullanmayı bilen her eleman kullanılabilir.
- Gömme tabla Overlok makinalarına montaj edilebilir.
- Set içeriği; kontrol paneli, elektronik ve pnömatik ekipmanlar, aparat mekanizması.

- Equal and smooth edge joining by pneumatic guide.
- It prevents twist of bottom.
- Better stitch quality and speed up production.
- Easy to use.
- It can be fixed on submerged table.
- Set includes; control panel, electronic and pneumatic equipment, folder mechanism.

Uyumlu Makinalar / Compatible Machines

- Overlok Makinası
Overlock Machine
- Brother, Yamato, Siruba, Juki, Pegasus

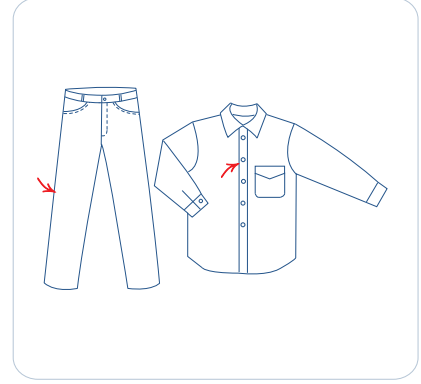
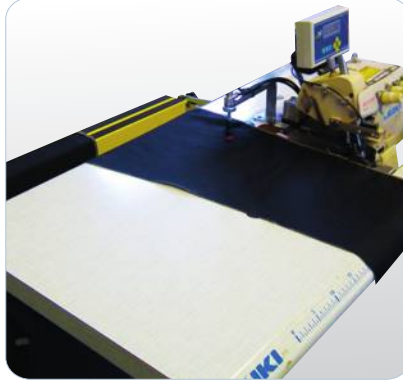
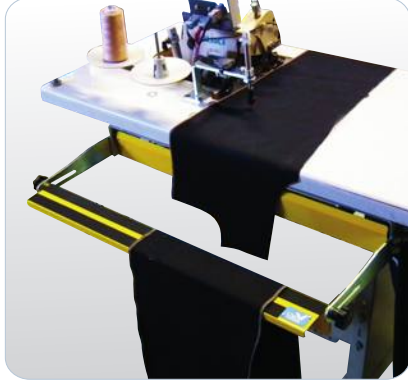


VIDEO

UMA-F-17

Pnömatik İstifleme Sistemi

Pneumatic Stacker



- Dikilen iş parçasını otomatik olarak istifler.
- İş gücü tasarrufu sağlar.
- Üretimi hızlandırır ve kalite standardını yükseltir.
- İş güvenlik standartlarına uygun şekilde tasarlanmıştır.
- Set içeriği; kontrol paneli, elektronik ve pnömatik ekipmanlar, istifleme mekanizması.

- It stacks pieces automatically.
- Saving from manpower.
- Speed up production and increase quality standards.
- Designed on work safety standards.
- Set includes; control panel, electronic and pneumatic equipment, stacker mechanism.

Uyumlu Makinalar / Compatible Machines

- Overlok Makinası
Overlock Machine
Brother, Yamato, Siruba, Juki, Pegasus
- Düz Makina
Lockstitch Machine

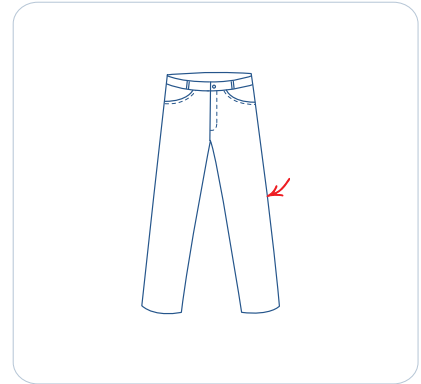
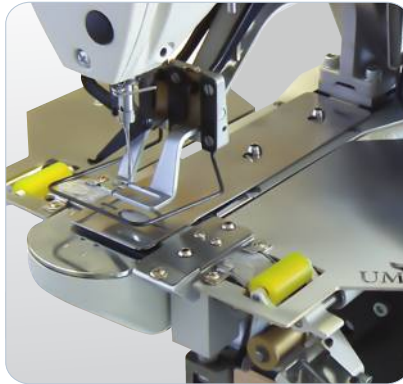


VIDEO

UMA-F-25

Keçe Besleme Sistemi

Reinforcement Tape Feeder



- 20 mm boyunda ve 10 mm eninde kesilen keçe yada takviye biye parçasını, dikimden önce işin altına otomatik besler.
- Kontrol panelinden cycle programlaması yapılabilir.
- Yıkamadan sonra temizlemeye ihtiyaç kalmaz.
- Kolay kurulum.
- Uzun bıçak ömrü.

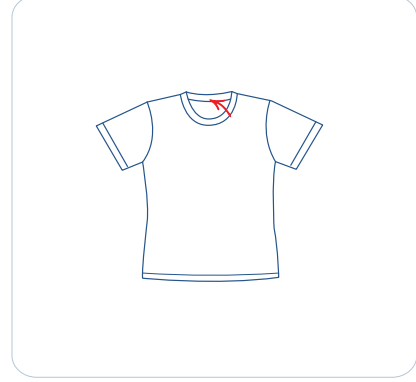
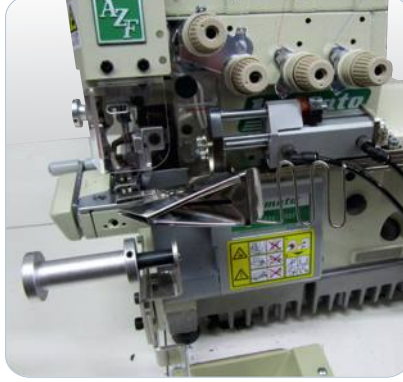
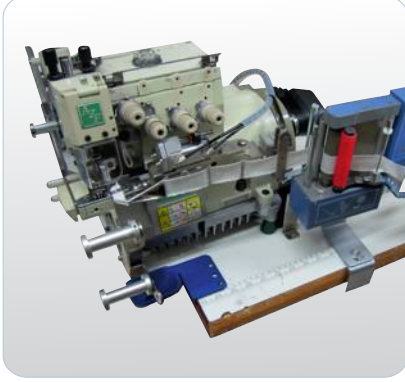
- It feeds reinforcement tape which is 20 mm length and 10 mm width automatically before stitch.
- Cycle programming by control panel.
- No need trimming after washing
- Easy to install.
- Long knife lifetime.

Uyumlu Makinalar / Compatible Machines

- Brother Ponteriz Makinası
Brother Bartack Machine
- Juki Ponteriz Makinası
Juki Bartack Machine



VIDEO

UMA-D-04
Tüp Yaka Takma ve Ense Biye Sistemi
Circular Collar Joining and Taping


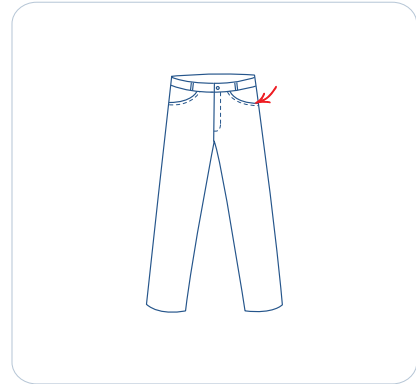
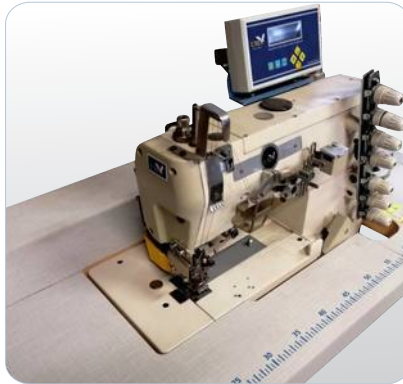
- Tüp yaka tişörtlerde, yaka takma ile ense biyesini birlikte dikme sistemidir.
- Sistem pnömatik kontrol ile çalışır.
- Set içeriği; Aparat, Pnömatik bağlantı sistemi, Pnömatik ekipmanlar.
- Attaching circular collar and neck tape in one operation.
- It works with pneumatic control.
- Set includes; folder, pneumatic equipment.

Uyumlu Makinalar / Compatible Machines

- Overlok Makinası
Overlock Machine
Brother, Yamato, Siruba, Juki, Pegasus



VIDEO

UMA-D-68
Pnömatik Biye ve Zincir Kesme Sistemi
Pneumatic Tape and Thread Cutter


- İş başlangıcında ve bitiminde otomatik olarak zincir ve biyeyi keser.
- İplik ve biye sarfiyatını düşürür.
- İş gücü tasarrufu sağlar.
- Üretimi hızlandırır ve kalite standardını yükseltir.
- İş güvenlik standartlarına uygun şekilde tasarlanmıştır.
- Fonksiyonel ve kolay kullanılabilir kontrol paneli.
- Buton yada dizlik ile birlikte manuel kullanılabilir. (Bu versiyonda kontrol paneli bulunmaz.)
- Set içeriği; kontrol paneli, elektronik ve pnömatik ekipmanlar, kesici mekanizma.

- Automatic chain and tape cut before and end of piece.
- Reduce thread and tape consumption.
- Saving from manpower.
- Speed up production and increase quality standards.
- Designed on work safety standards.
- Functional and easy to use control panel.
- There are button and knee operated versions. (There is not control panel and vacuum for those versions.)
- Set includes; control panel, electronic and pneumatic equipment, cutter mechanism.

Uyumlu Makinalar / Compatible Machines

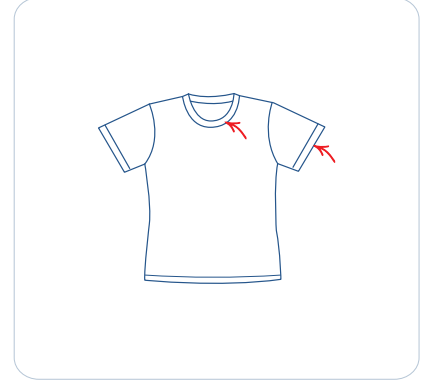
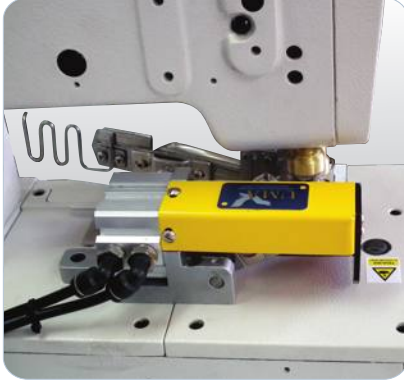
- Cep Karşılığı Reçme Makinası
Pocket Facing Coverstitch Machine



VIDEO

UMA-D-69

Pnömatik Makaslı Biye Kesme Sistemi / Pneumatic Scissor Type Tape Cutter



- İş başlangıcında ve bitiminde otomatik olarak zincir ve biyeyi keser.
- İplik ve biye sarfiyatını düşürür.
- İş gücü tasarrufu sağlar.
- Üretimi hızlandırır ve kalite standardını yükseltir.
- İş güvenlik standartlarına uygun şekilde tasarlanmıştır.
- Fonksiyonel ve kolay kullanılabilir kontrol paneli.
- Buton yada dizlik ile birlikte manuel kullanılabilir. Bu versiyonda kontrol paneli bulunmaz.
- Set içeriği; kontrol paneli, elektronik ve pnömatik ekipmanlar, kesici mekanizma.

- Automatic chain and tape cut before and end of piece.
- Reduce thread and tape consumption.
- Saving from manpower.
- Speed up production and increase quality standards.
- Designed on work safety standards.
- Functional and easy to use control panel.
- There are button and knee operated versions. (There is not control panel and vacuum for those versions.)
- Set includes; control panel, electronic and pneumatic equipment, cutter mechanism.

Uyumlu Makinalar / Compatible Machines

- Reçme Makinası
Coverstitch Machine

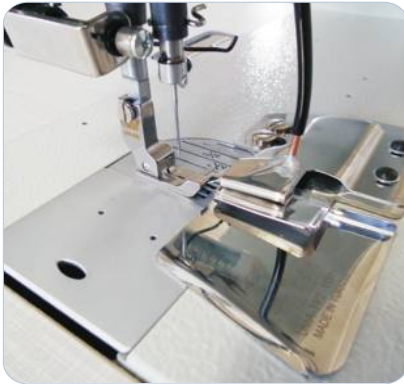


VIDEO

UMA-192

Havalı Arka Roba Aparat Seti

Back Yoke Attachment Set with Air



- Gömlek arka roba birleştirme işlemini tek operasyonda yapar.
- Kumaşı hava yardımı ile standart ölçüde katlar.
- İş gücü tasarrufu sağlar.
- Üretimi hızlandırır ve kalite standardını yükseltir.
- Set içeriği; Aparat, ayak, dişli, plaka seti, hava ekipmanları.

- Back yoke joining in one operation.
- Folding fabric in same size by air blow.
- Saving from manpower.
- Speed up production and increase quality standards.
- Set includes; folder, foot, feed dog, plate, air equipment.

Uyumlu Makinalar / Compatible Machines

- Düz Makina
1- Needle Lockstitch Machine
- İğne Transportlu Düz Makina
Needle Feed 1- Needle Lockstitch Machine
- Ayak Transportlu Düz Makina
Top Feed 1- Needle Lockstitch Machine



VIDEO

UMA-210
Havalı Etek Kıvrırma Aparatı
Bottom Hemming Folder Set with Air


- Gömlek eteğini hava ile standart ölçüde kıvrır.
- Aparat ve ayak değişimi ile farklı ölçülerde kullanılabilir.
- İş gücü tasarrufu sağlar.
- Üretimi hızlandırır ve kalite standardını yükseltir.
- Set içeriği; Aparat, ayak, dişli, plaka, hava ekipmanları.

- Hemming shirt bottom in same size by air blow.
- Different sizes can be used changing folder and foot.
- Saving from manpower.
- Speed up production and increase quality standards.
- Set includes; folder, foot, feed dog, plate, air equipment.

Uyumlu Makinalar / Compatible Machines

- Düz Makina
1- Needle Lockstitch Machine
- İğne Transportlu Düz Makina
Needle Feed 1- Needle Lockstitch Machine
- Ayak Transportlu Düz Makina
Top Feed 1-Needle Lockstitch Machine


VIDEO
UMA-211
Havalı Omuz Alma Aparatı
Shoulder Top Stitch Attachment with Air


- Gömlek omuz birleştirme işlemini tek operasyonda yapar.
- Kumaşı hava yardımı ile standart ölçüde katlar.
- Üretimi hızlandırır ve kalite standardını yükseltir.
- İş gücü tasarrufu sağlar.
- Set içeriği; Aparat, ayak, dişli, plaka, hava ekipmanları.

- Attaching shirt shoulder in one operation.
- Folding fabric in same size by air blow.
- Saving from manpower.
- Speed up production and increase quality standards.
- Set includes; folder, foot, feed dog, plate, air equipment.

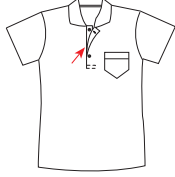
Uyumlu Makinalar / Compatible Machines

- Düz Makina
1- Needle Lockstitch Machine
- İğne Transportlu Düz Makina
Needle Feed 1- Needle Lockstitch Machine
- Ayak Transportlu Düz Makina
Top Feed 1-Needle Lockstitch Machine


VIDEO

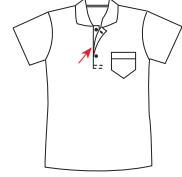
UMA-210-L

Sol Çıma Ayağı
Left Compensating Foot



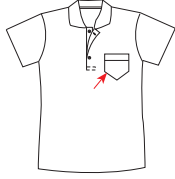
UMA-210-R

Sağ Çıma Ayağı
Right Compensating Foot



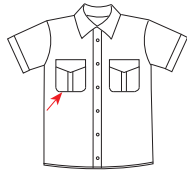
UMA-355-K

Kısa Tabanlı Çıma Ayağı
Short Sole Compensating Foot



UMA-355-KT

Tel Yaylı Kısa Tabanlı Çıma Ayağı
Short Sole Compensating Foot with Spring

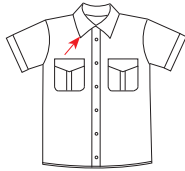


UMA-350

Yaka Balen Dikme Ayağı
Collar Stay Foot

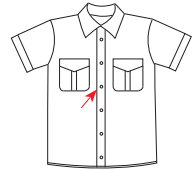


ÖLÇÜ
SIZE
10 mm
11 mm
12 mm
13 mm
14 mm



UMA-165-A

Aparat Ayağı
Presser Foot for Attachment

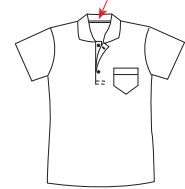


UMA-352-L

Biye Kapama Ayağı
Tape Binding Foot



ÖLÇÜ
SIZE
9 mm
10 mm
11 mm
12 mm

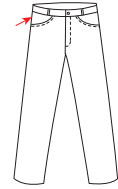


UMA-352-LR

Sağ-Sol Çımalı Ayak
Left-Right Compensating Foot



ÖLÇÜ
SIZE
3 mm
4 mm
5 mm
6 mm



UMA-352-SET

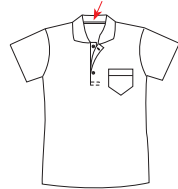
Biye Kapama Ayak Seti
Tape Binding Foot Set



10-13 mm Ayarlı / Adjustable

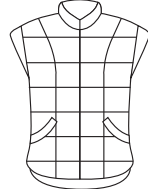


UMA-358-P



UMA-D-71

Rulmanlı Ayak
Presser Foot with Bearing



UMA-352-PF

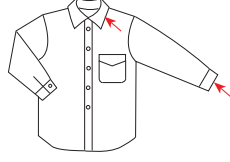
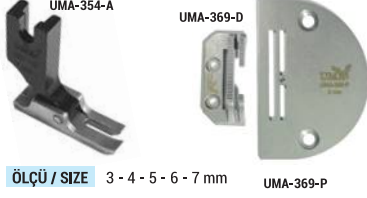
Pfaff Zıgzag Çıma Ayağı
Pfaff Zigzag Compensating Foot



UMA-353

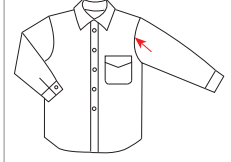
Yaka Takma Ayağı
Collar Attach Presser Foot



UMA-354
Yaka ve Manşet Gazi Seti
 Collar and Cuff Gauge Set

ÖLÇÜ / SIZE 3 - 4 - 5 - 6 - 7 mm

UMA-356
Boss Ayağı
 Sleeve Attach Foot

ÖLÇÜ
SIZE

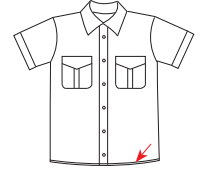
 1/8
 3/16
 1/4
 5/16
 3/8

UMA-188
Telalı Boss Ayağı
 Sleeve Attach Foot with Interlining

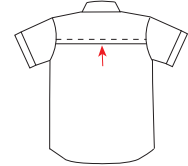
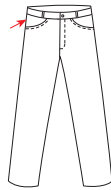
ÖLÇÜ
SIZE

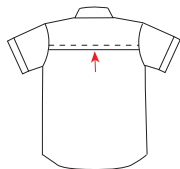
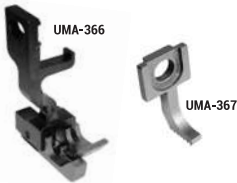
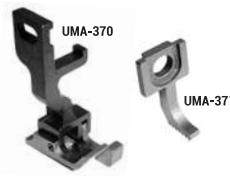
 1/4
 5/16
 3/8

UMA-372
Etek Ayağı
 Bottom Hem Foot

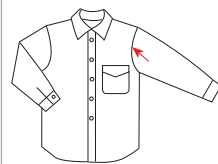
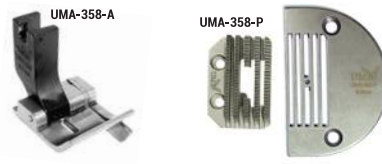
ÖLÇÜ
SIZE

 3 mm
 4 mm
 5 mm
 6 mm
 7 mm
 8 mm

UMA-374
Omuz Üstü Vurma Ayağı
 Shoulder Top Stitch Foot

UMA-382
Roba Ayağı
 Back Yoke Foot

UMA-360-T
Yan Çıma Ayağı
 Side Seam Compensating Foot

UMA-386
Juki Kollu Çift İğne Ayağı
 Compensating Foot for Feed off the Arm Machine

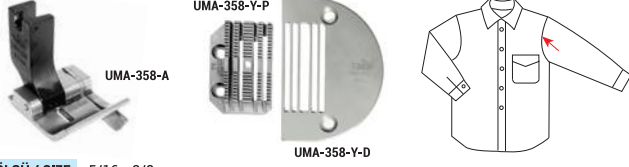
UMA-366-SET
Transportlu Roba Ayağı
 Back Yoke Foot for Top Feed
 Lockstitch Machine

UMA-370-SET
Transportlu Omuz Üstü Çıma Ayağı
 Shoulder Topstitch Foot for Top Feed
 Lockstitch Machine

UMA-358-L
Sol Kol Üstü Vurma Ayağı
 Left Armhole Top Stitch Foot

ÖLÇÜ
SIZE

 1/4
 5/16
 3/8

UMA-358-SET
Kol Üstü Vurma Seti
 Armhole Top Stitch Gauge Set

ÖLÇÜ / SIZE 5/16 - 3/8


UMA-358-Y-SET

İğne Trasportlu Kol Üstü Vurma Seti
Armhole Top Stitch Gauge Set for Needle Feed
Lockstitch Machine



ÖLÇÜ / SIZE 5/16 - 3/8

UMA-365-SET

Transportlu Kol Üstü Vurma Seti
Armhole Top Stitch Gauge Set for Top Feed
Lockstitch Machine



ÖLÇÜ / SIZE 1/4 - 5/16 - 3/8

UMA-360-A-SET

Kolima Ayak Seti
Collar Stand Edge Stitch Gauge Set



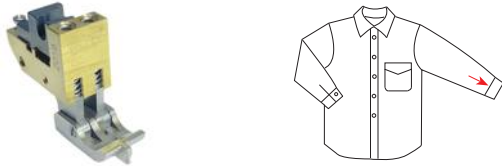
UMA-360-B-SET

Kolima Ayak Seti
Collar Stand Edge Stitch Gauge Set



UMA-361-A

Manşet Çima Ayağı
Cuff Top Stitch Foot



UMA-360

Gazi Ayağı
Compensating Foot



ÖLÇÜ
SIZE
2 mm
3 mm
4 mm
5 mm

UMA-368-SET

Transportlu Etek Kıvrırma Ayak Seti
Bottom Hem Gauge Set for Top Feed
Lockstitch Machine



ÖLÇÜ / SIZE 3 - 4 - 5 - 6 - 7 - 8 mm

UMA-368-A-SET

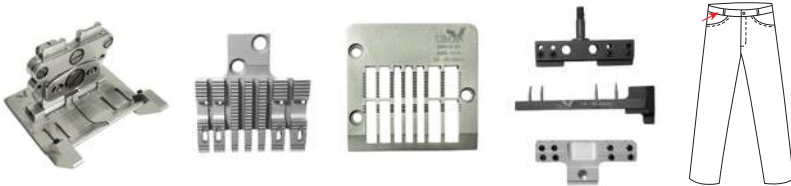
Transportlu Etek Kıvrırma Ayak Seti
Bottom Hem Gauge Set for Top Feed
Lockstitch Machine



ÖLÇÜ / SIZE 3 - 4 - 5 - 6 - 7 - 8 mm

UMA-D-53

Kemer Makina Takımı
Gauge Set for Waistband Machine



UMA-D-55

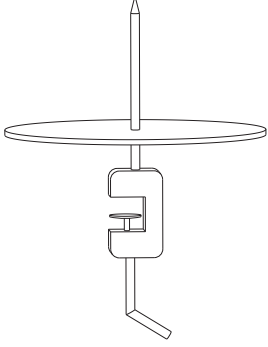
Overlok Patlet Takımı
Placket Gauge Set for Overlock



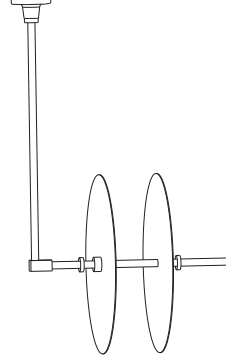
UMA-TAB-01

Biye Çardağı
Tape Rack

UMA-TAB-01
Yandan Gelen Biye Çardağı
Side Tape Rack

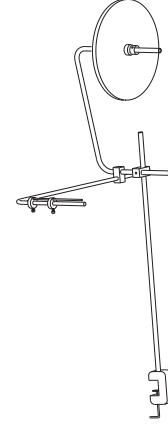


UMA-TAB-01-A
Alttan Gelen Biye Çardağı
Under Table Tape Rack



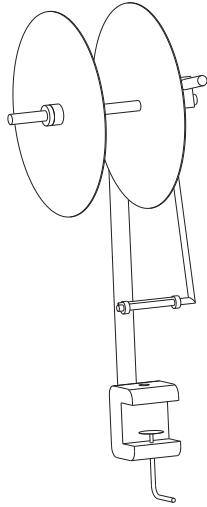
UMA-TAB-02

Üstten Gelen Biye Çardağı
Upper Tape Rack



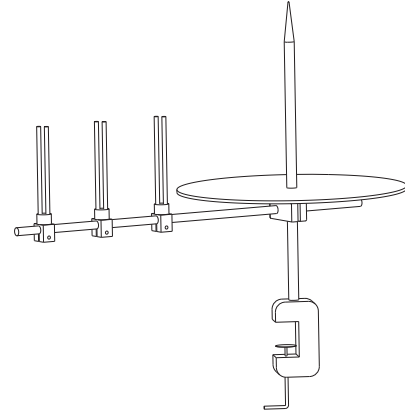
UMA-TAB-02-K

Üstten Gelen Kot Biye Çardağı
Upper Tape Rack for Denim



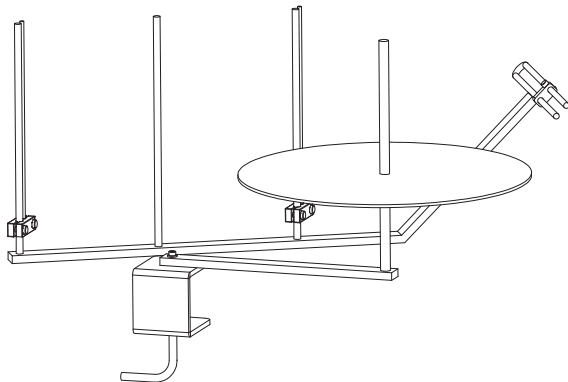
UMA-TAB-03

Biye Çardağı
Tape Rack



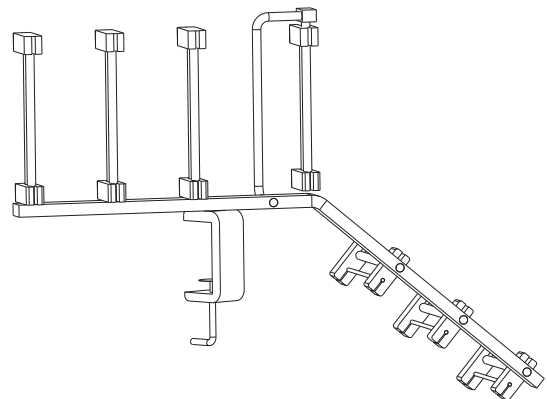
UMA-TAB-04

Rulo Kemer Biye Çardağı
Tape Rack with Tension for Roll Waistband

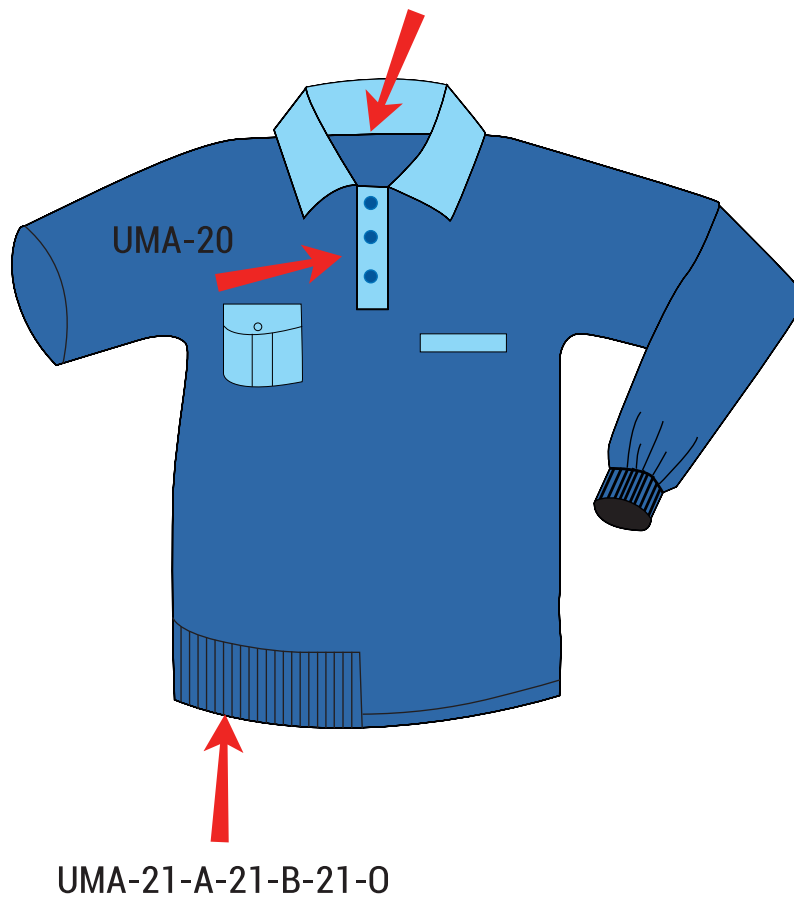
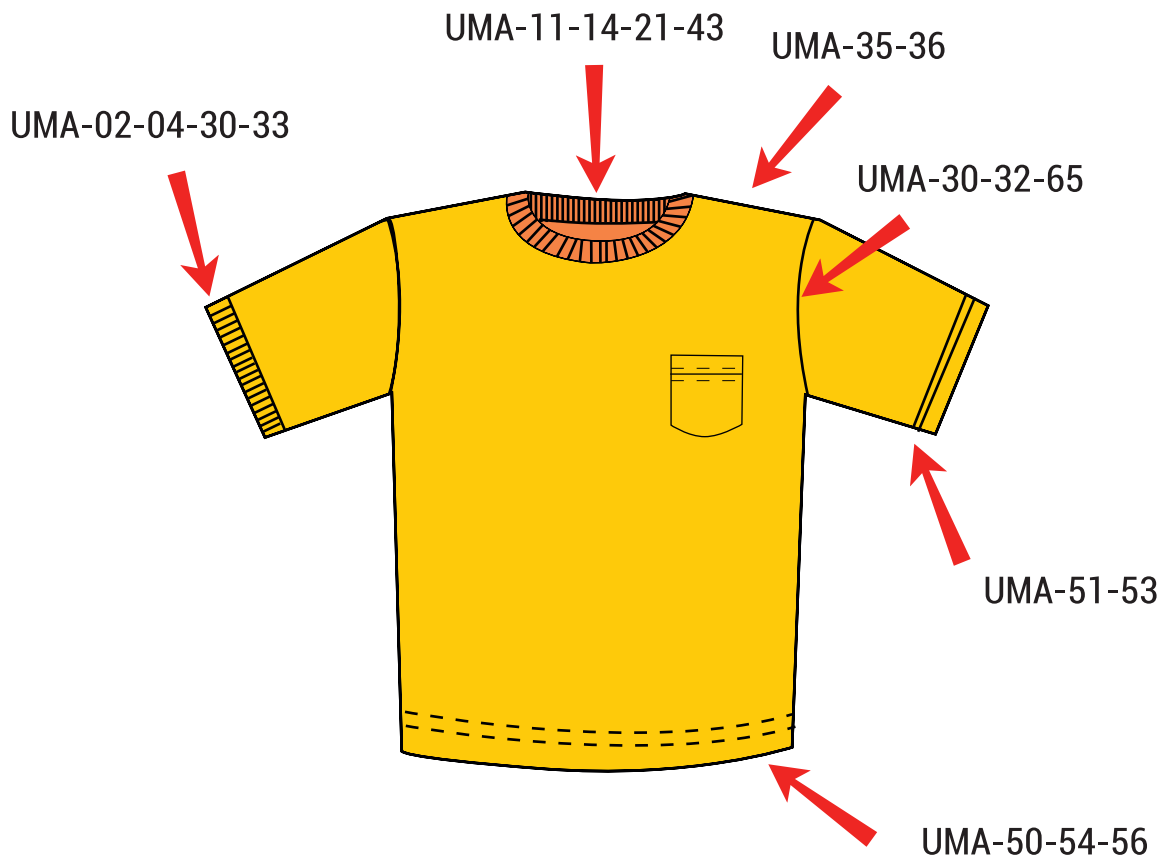


UMA-TAB-05

Tansiyonlu Açık Biye Kemer Çardağı
Tape Rack with Tension for Unrolled Waistband



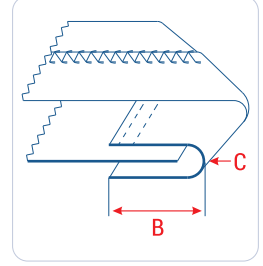
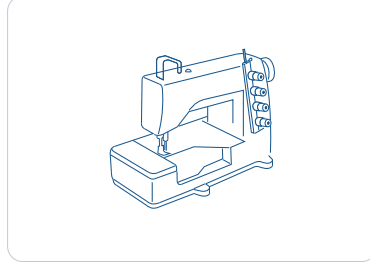
UMA-324Yaka Gazi Siperi
Collar Top Stitch Guide**UMA-326**Manşet Gazi Siperi
Cuff Top Stitch Guide**UMA-332**Apartura Çima Siperi
Sleeve Placket Edge Stitch Guide**UMA-334**Apartura İlik Siperi
Sleeve Placket Button Hole Guide**UMA-328**Düğme İikleme Aparatı
Button Hook**UMA-336**Manşet İlik Ölçü Aparatı
Cuff Button Hole Guide**UMA-338**Manşet Düğme Ölçü Aparatı
Cuff Button Guide**UMA-340**Yaka Ucu İlik Ölçü Aparatı
Collar End Button Hole Guide**UMA-342**Yaka Ucu Düğme Ölçü Aparatı
Collar End Button Guide**UMA-344**Ön Pat İlik Ölçü Aparatı
Front Placket Button Hole Spacing Guide**UMA-345**Ayarlı Ön Pat İlik Ölçü Aparatı
Adjustable Front Placket Button Hole Spacing Guide**UMA-346**Ön Pat Düğme Ölçü Aparatı
Front Placket Button Spacing Guide**UMA-348**Kuşak İlik Ölçü Aparatı
Collar Stand Button Hole Guide



UMA-01

Lastik Katlama Aparatı

Elastic Raw Edge Collarettte Binder



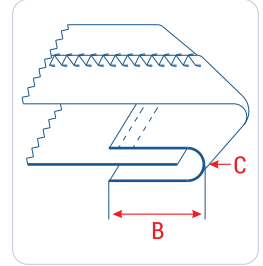
Makina / Machine :
•Sağdan Bıçaklı Reçme Makinası
Coverstitch Machine with Right Hand Fabric Trimmer

A	13	14	15	16	18	20
B	6,5	7	7,5	8	9	10
C	M					

UMA-02

Biye İkiye Katlama Aparatı

Raw Edge Collarettte Binder



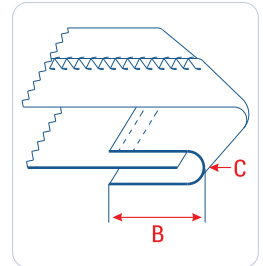
Makina / Machine :
•Bant Reçme Makinası
Coverstitch Machine for
Tape Binding

A	12	14	15	16	18	20	22	25	28	30	32	35	40	45	50	55	60
B	6	7	7,5	8	9	10	11	12,5	14	15	16	17,5	20	22,5	25	27,5	30
C	M																

UMA-03

Biye İkiye Katlama Aparatı

Raw Edge Collarettte Binder



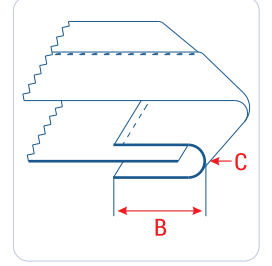
Makina / Machine :
•Etek Reçme Makinası
Coverstitch Machine

A	12	14	15	16	18	20	22	25	28	30	32	35	40
B	6	7	7,5	8	9	10	11	12,5	14	15	16	17,5	20
C	M												

UMA-04

Biye İkiye Katlama Aparat Seti

Right Angle Binder Set



Makina / Machine :
•Düz Makina
Lockstitch Machine

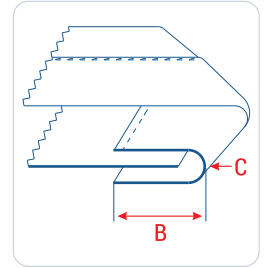
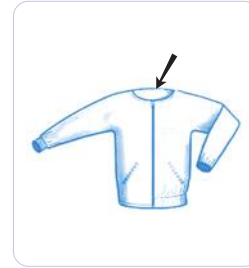
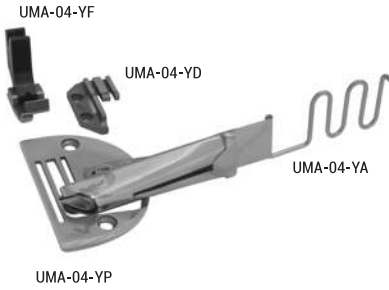
A	12	14	15	16	18	20	22	25
B	6	7	7,5	8	9	10	11	12,5
C	M							

* Set içeriği; aparat, plaka, dişli, ayak.
Set includes; attachment, plate, feed dog, foot.

UMA-04-Y

Biye İkiye Katlama Aparat Seti

Right Angle Binder Set



Makina / Machine :
•İğne Transportlu Düz Makina
Needle Feed Lockstitch Machine

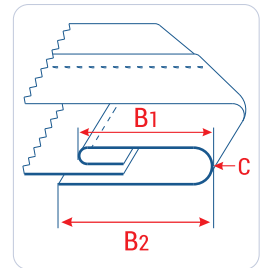
A	12	14	15	16	18	20	22	25
B	6	7	7,5	8	9	10	11	12,5
C	M H							

* Set içeriği; aparat, plaka, dişli, ayak.
Set includes; attachment, plate, feed dog, foot.

UMA-05

Tek İğne Tek Kıvrırma Biye Aparatı

Single Needle Single Fold Collarettte Binder



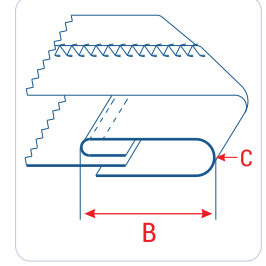
Makina / Machine :
•Bant Reçme Makinası
Coverstitch Machine for Tape Binding

A	22	25	28	30
B1	7	8	9	10
B2	8	9	10	11
C	M			

UMA-06

Biye Tek Kıvrırma Aparatı

Single Fold Collarettte Binder



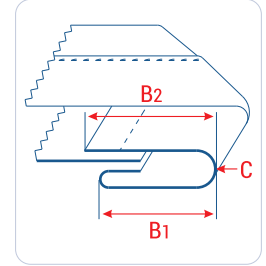
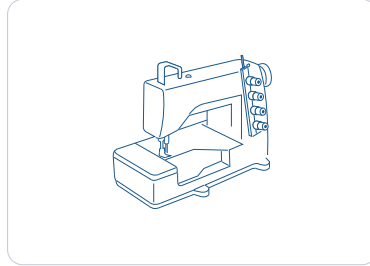
Makina / Machine :
•Bant Reçme Makinası
Coverstitch Machine for
Tape Binding

A	25	28	30	32	35	40	45	50	55	60	65	70	75	80	85	90	95	100
B	8	9	10	12	13	15	17	20	22	25	27	30	32	35	37	40	42	45
C	M																	

UMA-06-B

Biye Ters Tek Kıvrırma Aparatı

Opposite Single Fold Collarettte Binder



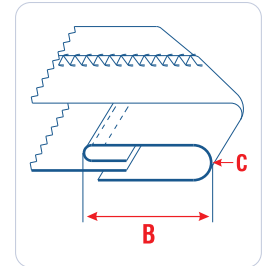
Makina / Machine :
•Bant Reçme Makinası
Coverstitch Machine for Tape Binding

A	25	32	37	42	47	52
B1	8	10	12	15	17	20
B2	11	13	15	17	20	22
C	M					

UMA-08

Biye Tek Kıvrırma Aparatı

Single Fold Collarettte Binder



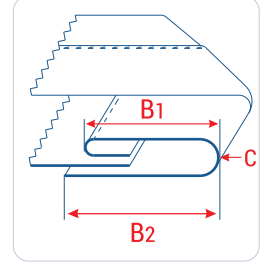
Makina / Machine :
•Etek Reçme Makinası
Coverstitch Machine

A	25	28	30	32	35	40	45	50
B	8	9	10	12	13	15	17	20
C	M							

UMA-09

Biye Tek Kıvrırma Aparat Seti

Single Fold Right Angle Binder Set



Makina / Machine :
•Düz Makina
Lockstitch Machine

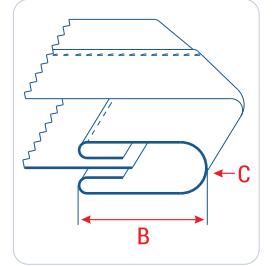
A	25	28	30
B1	8	9	10
B2	9	10	11
C	M		

* Set içeriği; aparat, plaka, dişli, ayak.
Set includes; attachment, plate, feed dog, foot.

UMA-10

Biye Çift Kıvrırma Aparatı

Double Fold Collarettte Binder



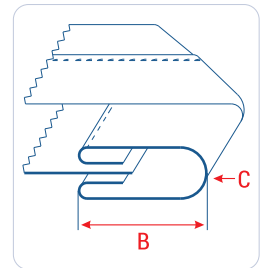
Makina / Machine :
•Bant Reçme Makinası
Coverstitch Machine for Tape Binding

A	22	25	28	30	32	35	40	45	50
B	5	6	7	8	9	10	12	13	15
C	M								

UMA-11

Biye Çift Kıvrırma Aparatı

Double Fold Collarettte Binder



Makina / Machine :
•Bant Reçme Makinası
Coverstitch Machine for
Tape Binding

A	22	25	28	30	32	35	40	45	50	55	60	65	70	75	80	85	90	95	100	
B	5	6	7	8	9	10	12	13	15	17	20	22	25	27	30	32	35	38	40	
C	M																			

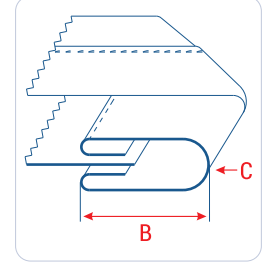
UMA-12

Saten Biye Çift Kıvrırma Aparatı

Double Fold Collarettie Binder for Satin



Makina / Machine :
•Bant Reçme Makinası
Coverstitch Machine for Tape Binding



B	5	6	7	8	9	10
C	L					

* Saten biyeler için üretilir.
Designed for satin tape.

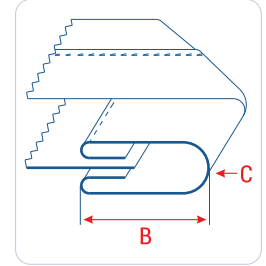
UMA-13

Biye Çift Kıvrırma Aparatı

Double Fold Collarettie Binder



Makina / Machine :
•Etek Reçme Makinası
Coverstitch Machine



A	22	25	28	30	32	35	40	45	50	55	60
B	5	6	7	8	9	10	12	13	15	17	20
C	M										

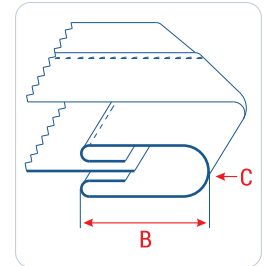
UMA-14

Biye Çift Kıvrırma Aparat Seti

Double Fold Right Angle Binder Set



Makina / Machine :
•Düz Makina
Lockstitch Machine



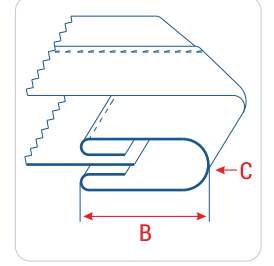
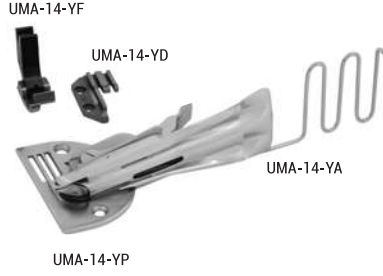
A	22	25	28	30	32	35	40
B	5	6	7	8	9	10	12
C	M						

* Set içeriği; aparat, plaka, dişli, ayak.
Set includes; attachment, plate, feed dog, foot.

UMA-14-Y

Biye Çift Kıvrırma Aparat Seti

Double Fold Right Angle Binder Set



Makina / Machine :
•İğne Transportlu Düz Makina
Needle Feed Lockstitch Machine

A 22 25 28 30 32 35 40

B 5 6 7 8 9 10 12

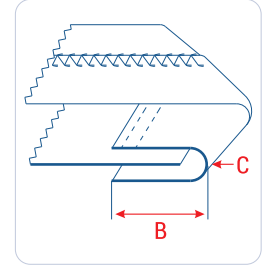
C M H

* Set içeriği; aparat, plaka, dişli, ayak.
Set includes; attachment, plate, feed dog, foot.

UMA-15

Tansiyonlu Lastik Katlama Aparatı

Elastic Collarette Binder with Tension



Makina / Machine :
•Bant Reçme Makinası
Coverstitch Machine for Tape Binding

A 12 14 15 16 18 20 22 25 28 30 32 35 40

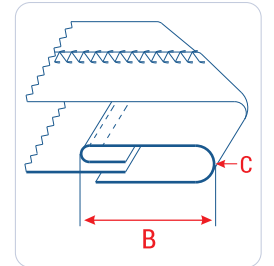
B 6 7 7,5 8 9 10 11 12,5 14 15 16 17,5 20

C M

UMA-16

Ayarlı Biye Tek Kıvrırma Aparatı

Adjustable Single Fold Colarrette Binder



Makina / Machine :
•Bant Reçme Makinası
Coverstitch Machine for Tape Binding

A 25 28 30 32 35 40 45 50 55 60

B 8 9 10 12 13 15 17 20 22 25

C M

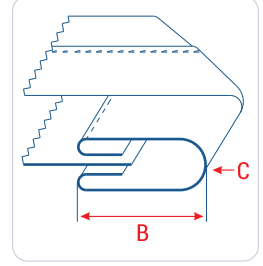
UMA-17

Ayarlı Biye Çift Kıvrırma Aparatı

Adjustable Double Fold Colarettte Binder



Makina / Machine :
•Bant Reçme Makinası
Coverstitch Machine for Tape Binding



A	22	25	28	30	32	35	40	45	50	55	60
B	5	6	7	8	9	10	12	13	15	17	20
C	M										

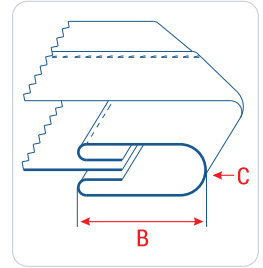
UMA-20

Polo Pat Aparatı

Attachment to Make Button Stay on Polo



Makina / Machine :
•Ayak Transportlu Düz Makina
Bottom - Top Feed Lockstitch Machine

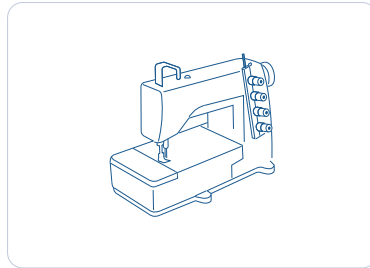


A	60	65	70	75	80	85	90	95	100
B	20	22	25	27	30	32	35	38	40
C	M								

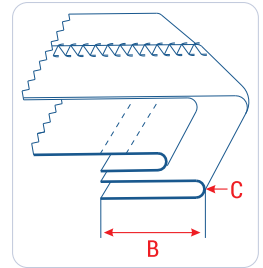
UMA-21-A

Tişört Kol ve Etek Bant Aparatı

Collar and Bottom Tape Folder



Makina / Machine :
•Etek Reçme Makinası
Coverstitch Machine

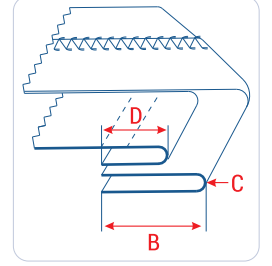
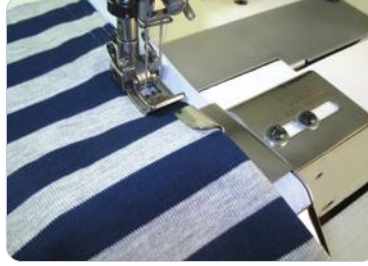


A	30	35	40	45	50	55	60	65	70	75	80	90	100
B	15	17,5	20	22,5	25	27,5	30	32,5	35	37,5	40	45	50
C	M												

UMA-21-B

Tiřört Kol ve Etek Bant Aparatı

Collar and Bottom Tape Folder



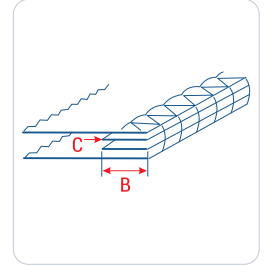
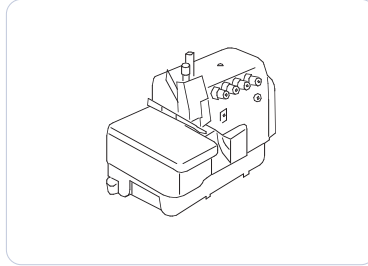
Makina / Machine :
•Etek Reçme Makinası
Coverstitch Machine

A	30	35	40	45	50	55	60	65	70	75	80	90	100
B	15	17,5	20	22,5	25	27,5	30	32,5	35	37,5	40	45	50
D	10	12	15										
C	M												

UMA-21-O

Ters Arabiye Aparatı

Piping Attachment



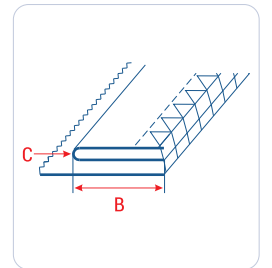
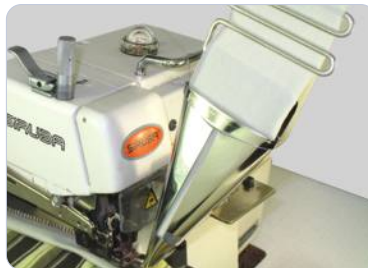
Makina / Machine :
•Overlok Makinası
Overlock Machine
Brother, Yamato, Siruba,
Juki, Pegasus

A	25	30	35	40	45	50
B	12,5	15	17,5	20	22,5	25
C	M					

UMA-22

Yaka ve Manřet Ribana Aparatı

Collar and Cuff Rib Attachment



Makina / Machine :
•Overlok Makinası
Overlock Machine
Brother, Yamato, Siruba,
Juki, Pegasus

A	30	35	40	45	50	55	60	65	70	75	80	90	100
B	15	17,5	20	22,5	25	27,5	30	32,5	35	37,5	40	45	50
C	M												

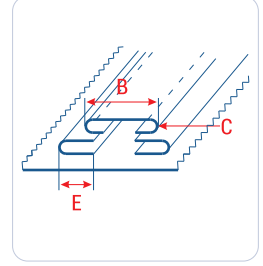
UMA-23

Sağ - Sol Arabiyeli Şerit Aparatı

Tape Folder with Double Piping Folder



Makina / Machine :
•Lastik Makinası
Multi Needle Machine



A 40 45 50 60

B 20 22 25 30

C M

D 20 25

E 10 12,5

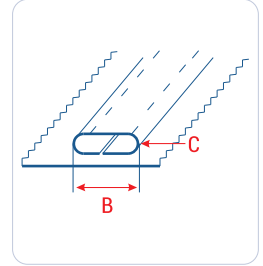
UMA-25

Şerit Aparatı

Tape Folder



Makina / Machine :
•Etek Reçme Makinası
Coverstitch Machine
•Lastik Makinası
Multi Needle Machine
•Çift İğne Kilit Dikiş Makinası
Two Needle Lockstitch Machine



A 15 16 18 20 22 25 28 30 40 50 55 60

B 7,5 8 9 10 11 12,5 14 15 20 25 28 30

C M

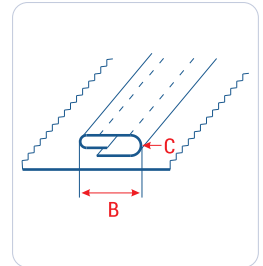
UMA-25-B

Bindirmeli Şerit Aparatı

Overlap Tape Folder



Makina / Machine :
•Etek Reçme Makinası
Coverstitch Machine
•Lastik Makinası
Multi Needle Machine
•Çift İğne Kilit Dikiş Makinası
Two Needle Lockstitch Machine



A 20 25 30 35 40 45 50 60

B 8 10 12 15 17 20 22 25

C M H

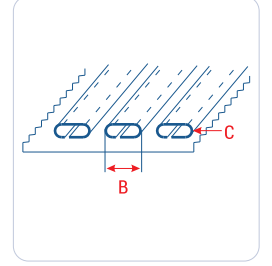
UMA-26

Üçlü Şerit Aparatı

Triple Tape Folder



Makina / Machine :
•Lastik Makinası
Multi Needle Machine



A	15	20	25	30
B	7,5	10	12,5	15
C	M			

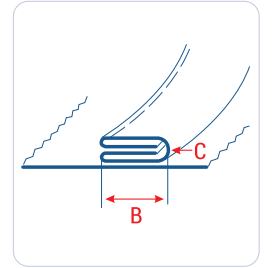
UMA-27

Şerit Aparatı

Tape Folder



Makina / Machine :
•Düz Makina
Lockstitch Machine



A	25	28	30
B	6	7	8
C	M		

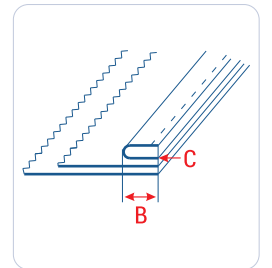
UMA-28

Yaka İç Biye Aparatı

Neck Tape Folder



Makina / Machine :
•Düz Makina
Lockstitch Machine



A	20	25	30
B	10	12,5	15
C	M		

UMA-29

Yaka İç Biye Aparat Seti

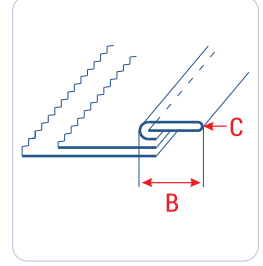
Neck Tape Attachment Set



* Set içeriği ; aparat, ayak, siper.
Set includes ; attachment, foot, guide.



Makina / Machine :
•Düz Makina
Lockstitch Machine



A	20	22	25	28	30
B	8	9	10	11	12
C	M				

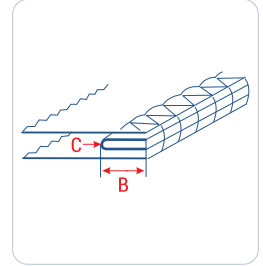
UMA-30

Arabiye Aparatı

Piping Attachment



Makina / Machine :
•Overlok Makinası
Overlock Machine
Brother, Yamato, Siruba,
Juki, Pegasus



A	20	25	30	35	40	45	50	55	60	65	70	75	80
B	10	12,5	15	17,5	20	22,5	25	27,5	30	32,5	35	37,5	40
C	M												

UMA-32

Fitilli Arabiye Aparatı

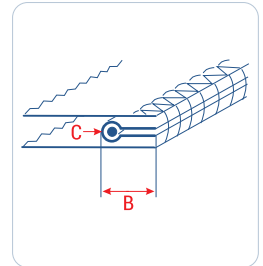
Piping Attachment with Cord



* Fitil kanallı ayak ile kullanılır.
Piping foot must be used.



Makina / Machine :
•Overlok Makinası
Overlock Machine
Brother, Yamato, Siruba,
Juki, Pegasus



A	20	25	30
B	10	12,5	15
C	M		

UMA-33

Ekstrafor Aparatı

Woven Tape Attachment

UMA-33-A



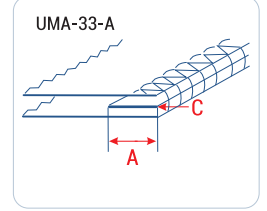
UMA-33-B



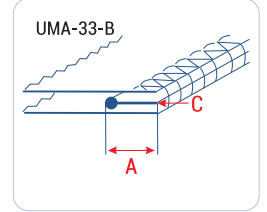
* Fıtıl kanallı ayak ile kullanılır.
Piping foot must be used.



Makina / Machine :
•Overlok Makinası
Overlock Machine
Brother, Yamato, Siruba,
Juki, Pegasus



A	6	8	10	12	15
C	M				



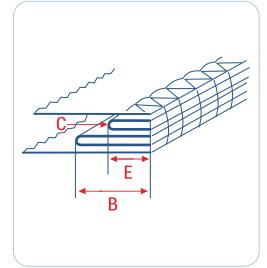
UMA-34

Çiftli Arabiye Aparatı

Double Piping Attachment



Makina / Machine :
•Overlok Makinası
Overlock Machine
Brother, Yamato, Siruba,
Juki, Pegasus



A	20	25	30	35	40
B	10	12,5	15	17,5	20
C	M				
D	20	25	30	35	40
E	10	12,5	15	17,5	20

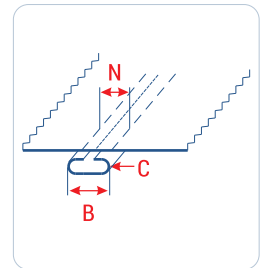
UMA-35

Omuz İç Biye Aparatı

Neck Tape Attachment



Makina / Machine :
•Çift İğne Zincir Dikiş Makinası
Two Needle Chainstitch Machine

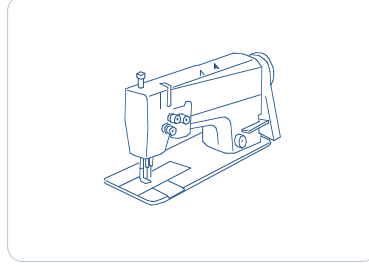


A	25
B	10
C	M
N	1/4

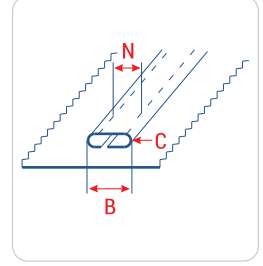
UMA-36

Omuz İç Biye Aparatı

Neck Tape Attachment



Makina / Machine :
•Çift İğne Zincir Dikiş Makinası
Two Needle Chainstitch Machine



A	18 20 25
B	8 10 12,5
N	3/16 1/4 3/8
C	M

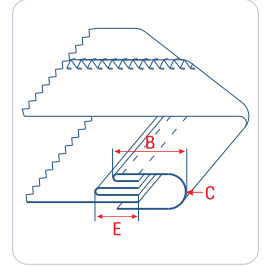
UMA-41

Arabiyeli Tek Kıvrma Aparatı

Single Fold Collarette Binder with Piping Folder



Makina / Machine :
•Bant Reçme Makinası
Coverstitch Machine for Tape Binding



A	25 28 30 32 35 40 45 50 55 60
B	8 9 10 12 13 15 17 20 22 25
C	M
D	20 25
E	10 12,5

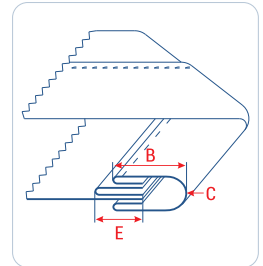
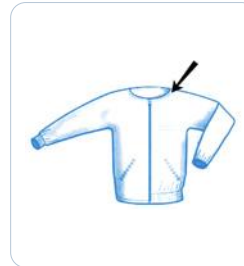
UMA-43

Arabiyeli Çift Kıvrma Aparatı

Double Fold Collarette Binder with Piping Folder



Makina / Machine :
•Bant Reçme Makinası
Coverstitch Machine for Tape Binding

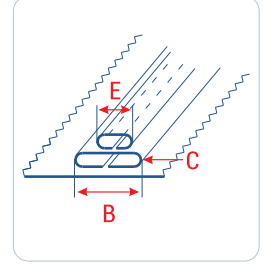


A	28 30 32 35 40 45 50 55 60
B	7 8 9 10 12 13 15 17 20
C	M
D	20 25
E	10 12,5

UMA-47

Çiftli Şerit Aparatı

Double Piping Attachment



Makina / Machine :
 •Lastik Makinası
 Multi Needle Machine
 •Etek Reçme Makinası
 Coverstitch Machine

A 30 35 40 45 50 55 60

B 15 17 20 22 25 28 30

C M

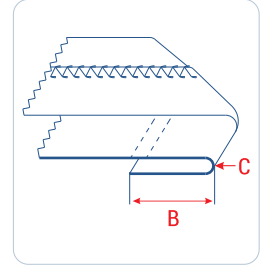
D 20 25 30

E 10 12,5 15

UMA-50

Etek Katlama Aparatı

Single Down Turn Hemmer



Makina / Machine :
 •Etek Reçme Makinası
 Coverstitch Machine

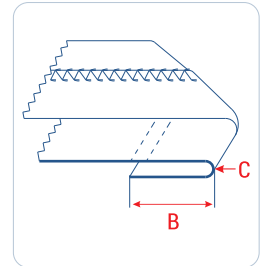
B 8 10 12 15 17 20

C M

UMA-51

Ayarlı Etek Katlama Aparatı

Adjustable Single Down Turn Hemmer



Makina / Machine :
 •Etek Reçme Makinası
 Coverstitch Machine

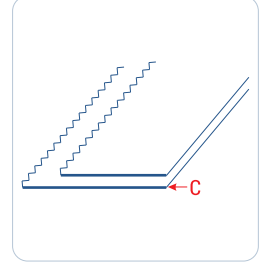
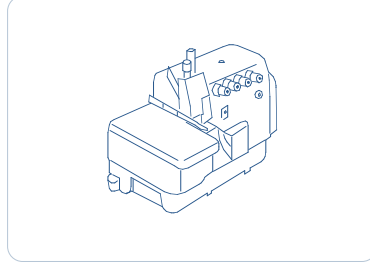
B 10~35

C M

UMA-52

Kıvrım Açıcı Siper

Uncurling Guide



Makina / Machine :
•Overlok Makinası
Overlock Machine

C M PENYE KUMAŞI

UMA-53

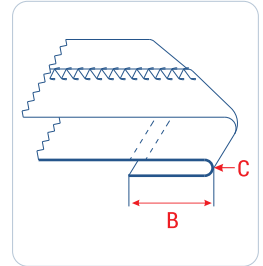
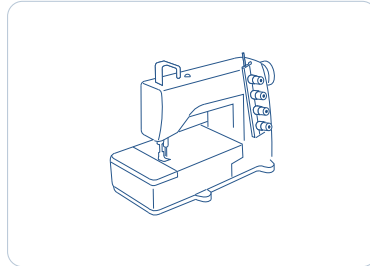
Ayarlı Etek Katlama Aparatı

Adjustable Single Down Turn Hemmer

UMA-53-A



UMA-53-B



Makina / Machine :
•Etek Reçme Makinası
Coverstitch Machine

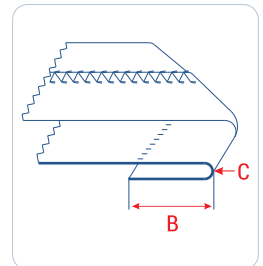
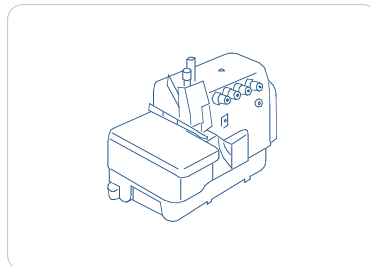
B 10~20

C M

UMA-54

Overlok Gizli Dikiş Etek Aparatı

Overlock Single Down Turn Hemmer



Makina / Machine :
•Overlok Makinası
Overlock Machine
Brother, Yamato, Siruba,
Juki, Pegasus

B 20~30

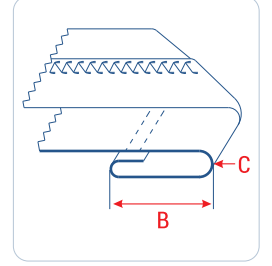
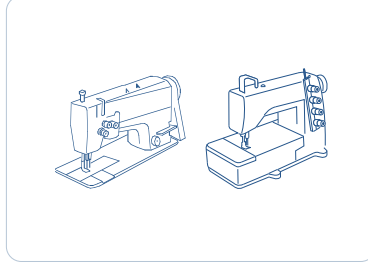
C M

* Set içeriği ; aparat, ayak.
Set includes ; attachment, foot.

UMA-55

Temiz Kıvrırma Etek Aparatı

Double Down Turn Hemmer



Makina / Machine :
 •Düz Makina
 Lockstitch Machine
 •Etek Reçme Makinası
 Coverstitch Machine

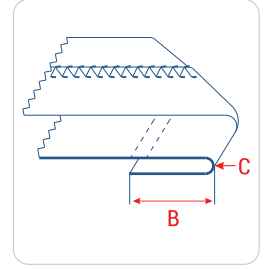
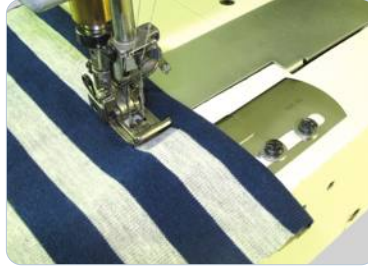
B 12 15 18 20

C M

UMA-56

Ayarlı Etek Katlama Aparatı

Adjustable Single Down Turn Hemmer



Makina / Machine :
 •Etek Reçme Makinası
 Coverstitch Machine

B 10~35

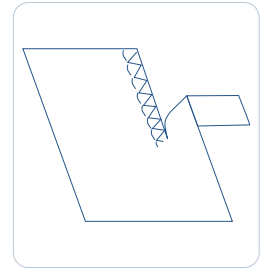
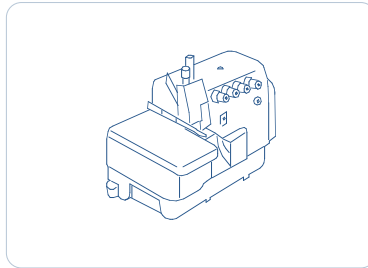
C M

UMA-57

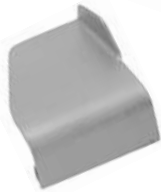
Kumaş Siperi

Fabric Guide

UMA-57-A



UMA-57-B

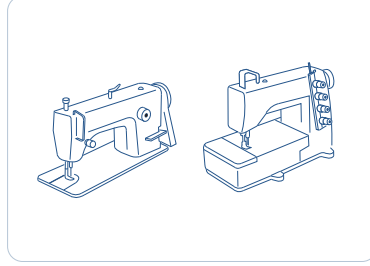


Makina / Machine :
 •Overlok Makinası
 Overlock Machine
 Brother, Yamato, Siruba,
 Juki, Pegasus

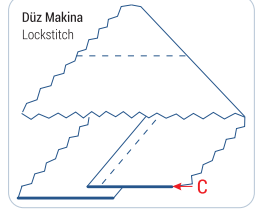
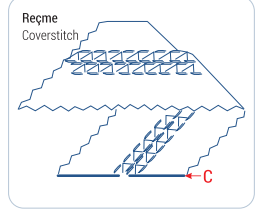
UMA-60

Kumaş Birleştirme Aparatı

Fabric Attaching Guide

UMA-60-R Reçme Makinası
Coverstitch MachineUMA-60-D Düz Makina
Lockstitch Machine

Makina / Machine :
•Etek Reçme Makinası
Coverstitch Machine
•Düz Makina
Lockstitch Machine

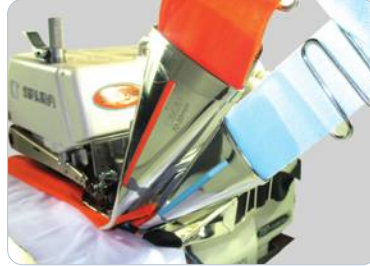


C M

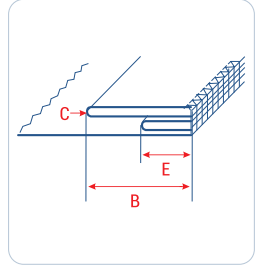
UMA-62

Yaka ve Manşet İkilü Ribana Aparatı

Collar and Cuff Double Rib Attachment



Makina / Machine :
•Overlok Makinası
Overlock Machine
Brother, Yamato, Siruba,
Juki, Pegasus



A 70

B 35

C M

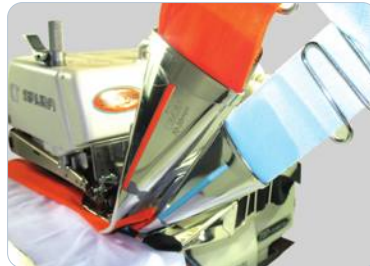
D 35

E 17,5

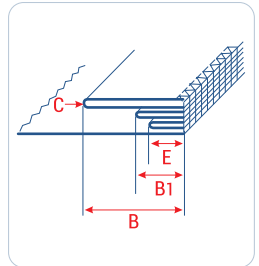
UMA-63

Yaka ve Manşet Üçlü Ribana Aparatı

Collar and Cuff Triple Rib Attachment



Makina / Machine :
•Overlok Makinası
Overlock Machine
Brother, Yamato, Siruba,
Juki, Pegasus



A 70 35

B B1 35 17,5

C M

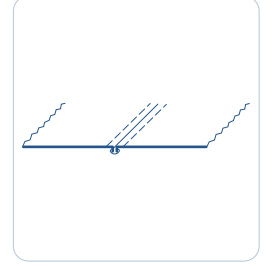
D 25

E 12,5

UMA-65

Overlok Dikişi Takip Siperi

Overlock Seam Guide

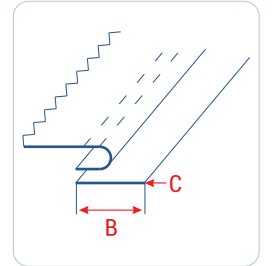
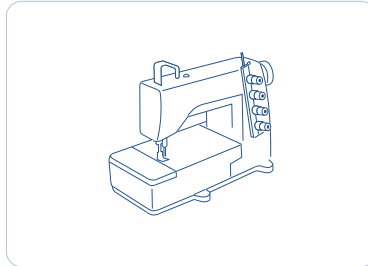


Makina / Machine :
•Etek Reçme Makinası
Coverstitch Machine

UMA-85

Etek-Kol Ekstrafor Aparatı

Woven Tape Attachment for Hemline and Sleeve



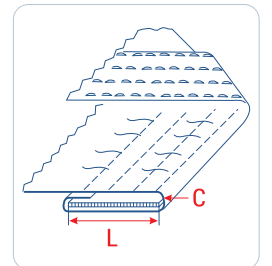
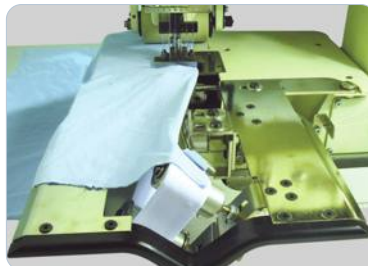
Makina / Machine :
•Etek Reçme Makinası
Coverstitch Machine

A 15 20 25 30 35 40 45 50
B M

UMA-91

Lastikli Kemer Aparatı

Hemmer with Elastic for Waistband



Makina / Machine :
•Lastik Makinası
Multi Needle Machine

L 25 30 35 40
C M

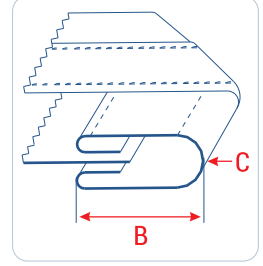
UMA-215

Kenar Biye Aparatı

Straight Binder



Makina / Machine :
•Düz Makina
Lockstitch Machine



A	22	26	30	35	40
B	6	7	8	10	12
C	M				

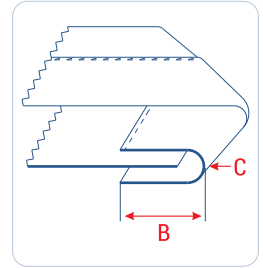
UMA-216

Kenar Biye Aparatı

Straight Binder



Makina / Machine :
•Düz Makina
Lockstitch Machine



A	12	14	15	16	18	20	22	25	30
B	6	7	7,5	8	9	10	11	12,5	15
C	M								

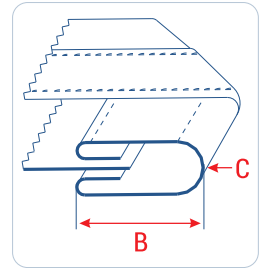
UMA-217

Kenar Biye Aparatı

Tape Binder



Makina / Machine :
•Düz Makina
Lockstitch Machine



A	25	28	30	32	35	40
B	6	7	8	9	10	12
C	M					

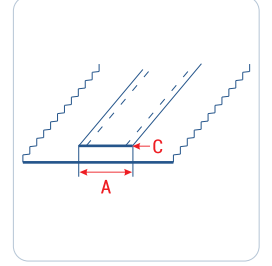
UMA-227

Ekstrafor Aparatı

Woven Tape Attachment



Makina / Machine :
 •Etek Reçme Makinası
Coverstitch Machine
 •Lastik Makinası
Multi Needle Machine
 •Çift İğne Kilit Dikiş Makinası
Two Needle Lockstitch Machine
 •Düz Makina
Lockstitch Machine



A 10 12 15 18 20 22 25 30 35 40

C M

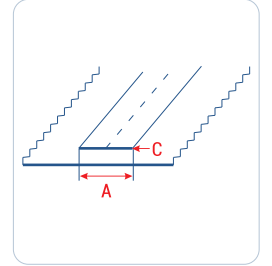
UMA-230

Ekstrafor Aparatı

Woven Tape Folder



Makina / Machine :
 •Düz Makina
Lockstitch Machine



A 5 6 8 10 12 15 18 20

C M

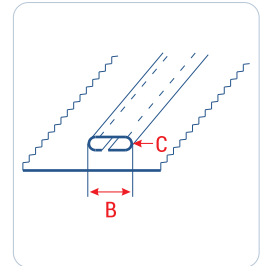
UMA-232

Ayak Ucu Şerit Aparatı

Top Stripper Foot



Makina / Machine :
 •Çift İğne Kilit Dikiş Makinası
Two Needle Lockstitch Machine



A 16 20 22 25

B 8 10 11 12,5

N 3/16" 1/4" 5/16" 3/8"

C M

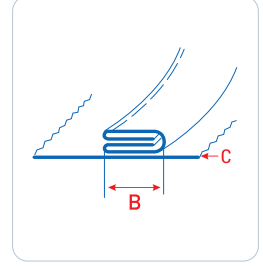
UMA-237

Ayak Ucu Çift Kıvrırma Şerit Aparatı

Lay On Foot



Makina / Machine :
•Düz Makina
Lockstitch Machine

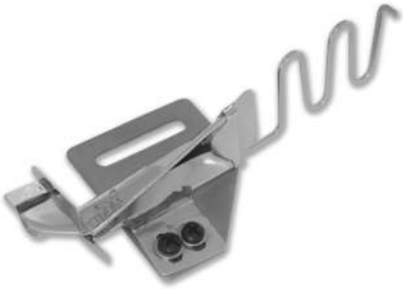


A	12
B	3
C	L

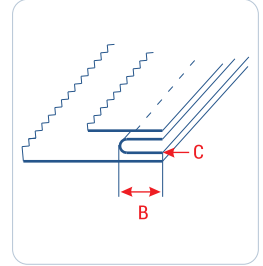
UMA-239

Mostra Arabiye Aparatı

Facing Attachment with Piping



Makina / Machine :
•Düz Makina
Lockstitch Machine

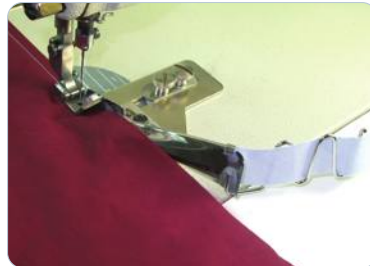


A	15 18 20 25 30
B	7,5 9 10 12,5 15
C	L

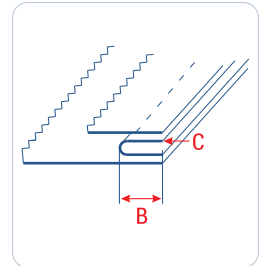
UMA-240

Arabiye Aparatı

Piping Attachment



Makina / Machine :
•Düz Makina
Lockstitch Machine



A	20 25 30
B	10 12,5 15
C	M

UMA-243

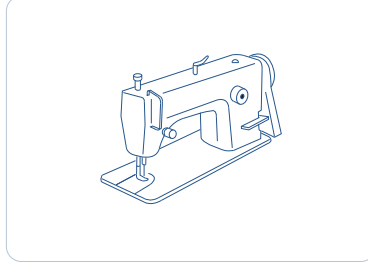
Ekstrafor Aparatı

Woven Tape Attachment

UMA-243-A



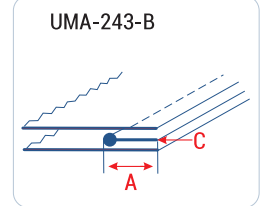
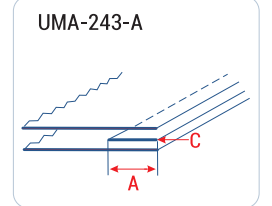
UMA-243-B



Makina / Machine :
•Düz Makina
Lockstitch Machine



A	6	8	10	12	15
C	M				



UMA-244

Fitilli Arabiye Aparatı

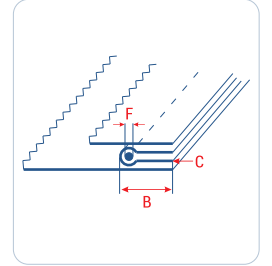
Piping Attachment with Cord



Makina / Machine :
•Düz Makina
Lockstitch Machine



A	20	25	30
B	10	12,5	15
C	M		
F	2	3	



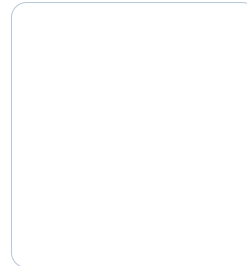
UMA-251

Etek Katlama Aparatı

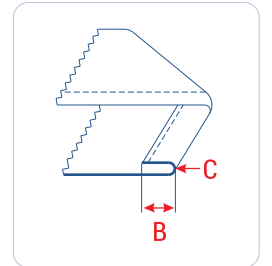
Single Upturn Hemmer



Makina / Machine :
•Düz Makina
Lockstitch Machine



B	6	8	10	12	15	18	20
C	M						



UMA-255

Eşarp Kenar Kıvrırma Aparatı

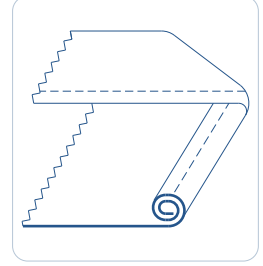
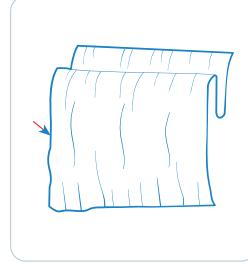
Roll Hemmer

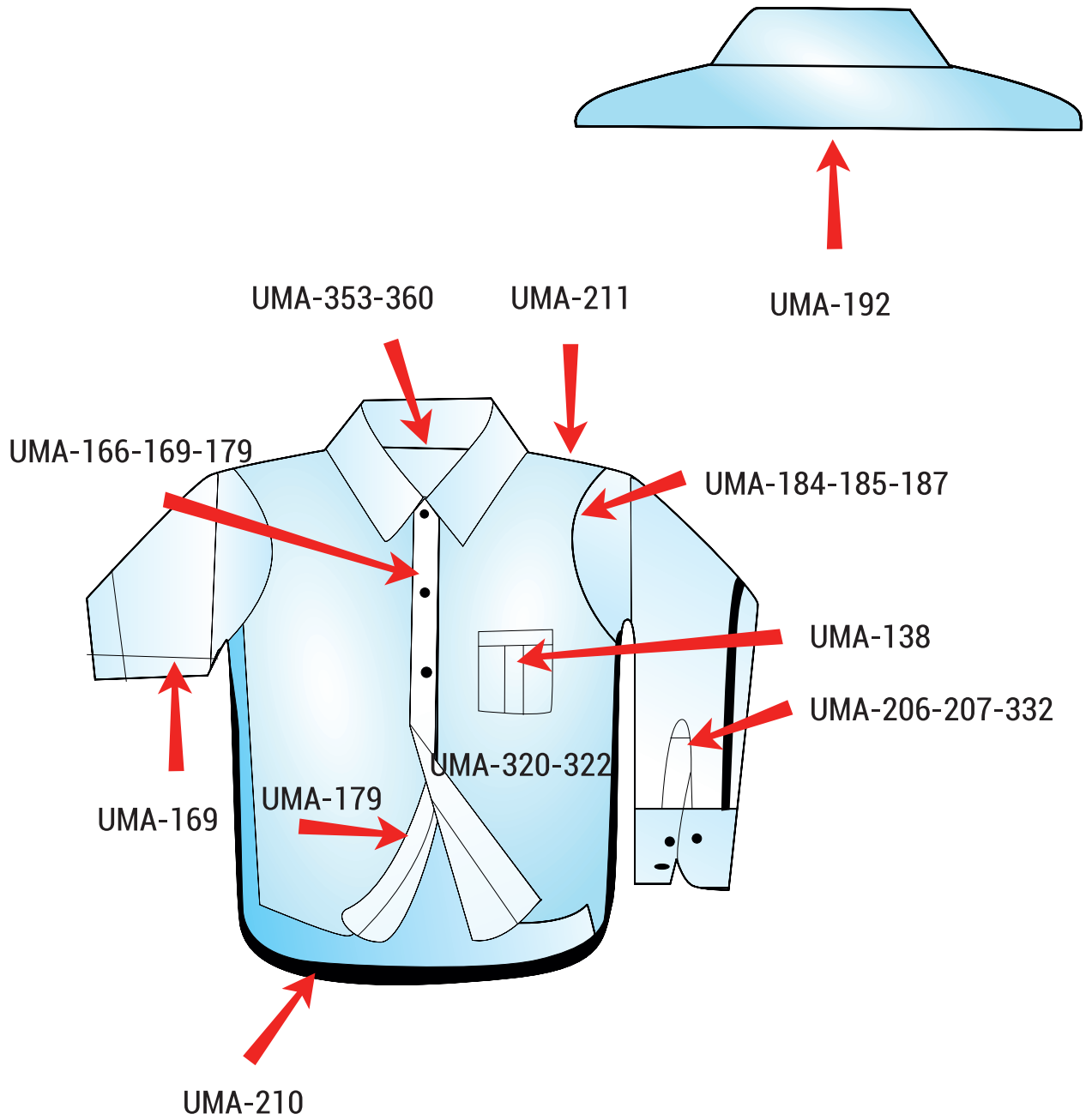


* Set içeriği ; aparat, ayak.
Set includes ; attachment, foot.



Makina / Machine :
•Düz Makina
Lockstitch Machine

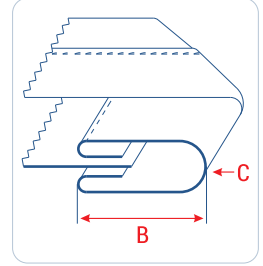
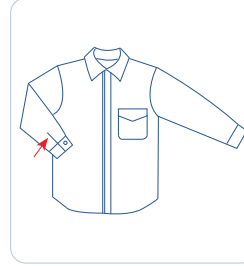




UMA-14

Biye Çift Kıvrırma Aparat Seti

Double Fold Right Angle Binder Set



Makina / Machine :
•Düz Makina
Lockstitch Machine

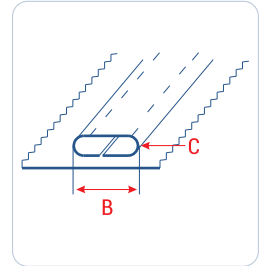
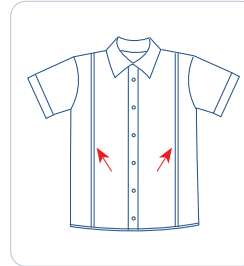
A	22	25	28	30	32	35	40
B	5	6	7	8	9	10	12
C	M						

* Set içeriği; aparat, plaka, dişli, ayak.
Set includes; attachment, plate, feed dog, foot.

UMA-25-G

Gömlek Şerit Aparatı

Tape Folder for Shirt



Makina / Machine :
•Lastik Makinası
Multi Needle Machine
•Çift İğne Kilit Dikiş Makinası
Two Needle Lockstitch Machine

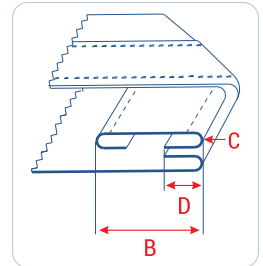
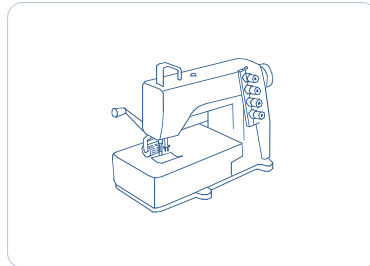
A	14	16	20	25	30	35	36	42	45	50	55	65	70
B	7	8	10	12,5	15	17,5	18	21	22,5	25	27,5	32,5	35
C	L												

* Kanallı ayak tavsiye edilir.
Recommended; special foot.

UMA-116

Ön Pat Aparatı

Front Placket Folder



Makina / Machine :
•Lastik Makinası
Multi Needle Machine
•Çift İğne Kilit Dikiş Makinası
Two Needle Lockstitch Machine

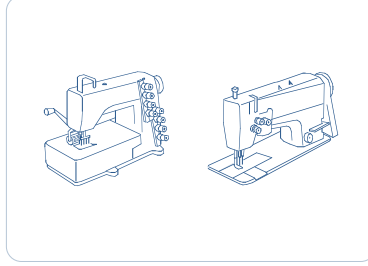
A	45	50	55	65	70
B	22	25	27,5	32	35
D	10				
C	L				

* Kanallı ayak tavsiye edilir.
Recommended; special foot.

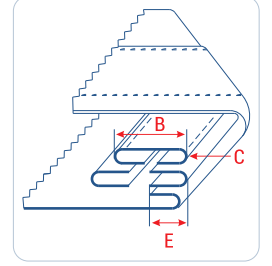
UMA-116-A

Arabiyeli Ön Pat Aparatı

Front Placket Folder with Piping



Makina / Machine :
 •Lastik Makinası
 Multi Needle Machine
 •Çift İğne Kilit Dikiş Makinası
 Two Needle Lockstitch Machine



A 40 50 55 65 70

B 22 25 27,5 32 35

C L

D 20 25

E 10 12,5

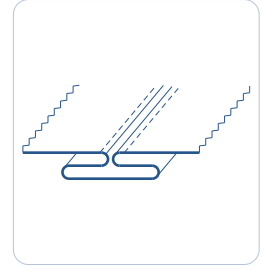
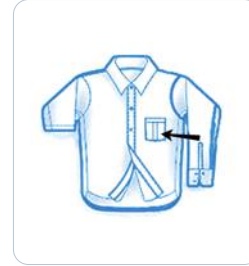
UMA-138

Körük Aparatı

Box Pleat Folder



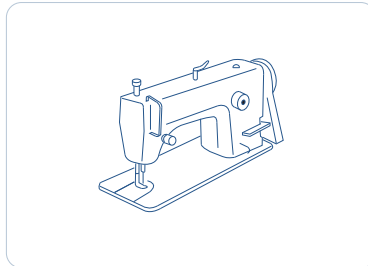
Makina / Machine :
 •Çift İğne Kilit Dikiş Makinası
 Two Needle Lockstitch Machine



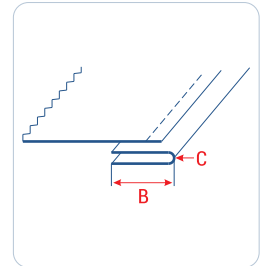
UMA-164

Yaka Kuşak Arabiye Aparatı

Piping Folder for Collar Stand



Makina / Machine :
 •Düz Makina
 Lockstitch Machine



A 16 18 20 22 25

B 8 9 10 11 12

C L

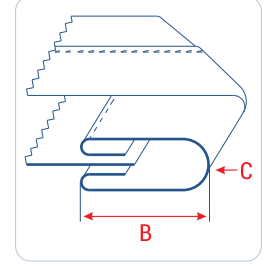
UMA-165-D

Ön Pat Aparatı

Front Placket Folder



Makina / Machine :
•Düz Makina
Lockstitch Machine



A	45	50	55	60	65	70	75	80
B	15	17	18	20	22	25	27	30
C	M							

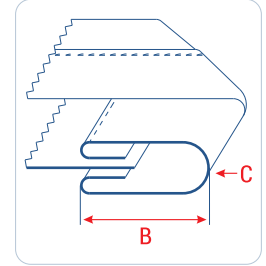
UMA-165-C

Ön Pat Aparatı

Front Placket Folder



Makina / Machine :
•Çift İğne Kilit Dikiş Makinası
Two Needle Lockstitch Machine



A	45	50	55	60	65	70	75	80
B	15	17	18	20	22	25	27	30
C	M							

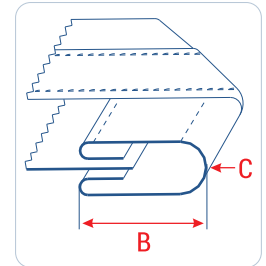
UMA-165-K

Ön Pat Aparatı

Front Placket Folder



Makina / Machine :
•Lastik Makinası
Multi Needle Machine

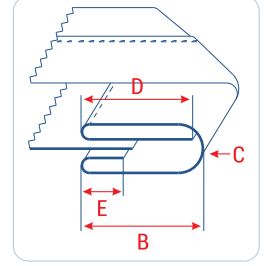


A	60	65	70	75	80	85	95	100	110
B	20	22	25	28	30	32	38	40	42
C	M								

UMA-165-DB

Tam Katlama Ön Pat Aparatı

Full Fold Front Placket Folder



* Çektirme tavsiye edilir.
Recommended; puller.

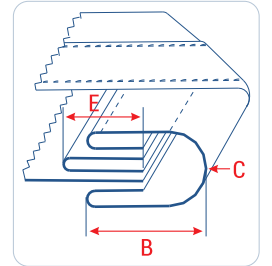
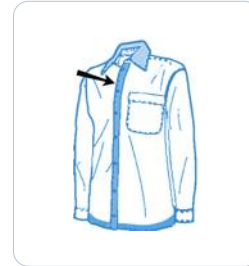
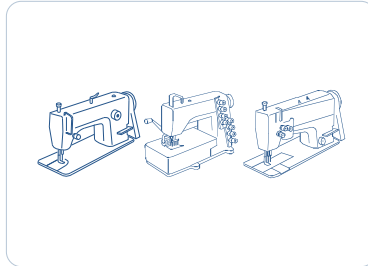
Makina / Machine :
•Düz Makina
Lockstitch Machine
•Lastik Makinası
Multi Needle Machine
•Çift İğne Kilit Dikiş Makinası
Two Needle Lockstitch Machine

A	70	76	85	90	105	120
B	20	22	25	27	30	35
D	20	22	25	27	30	35
E	10	10	10	10	15	15
C	M					

UMA-165-A

Arabiyeli Ön Pat Aparatı

Front Placket Folder with Piping



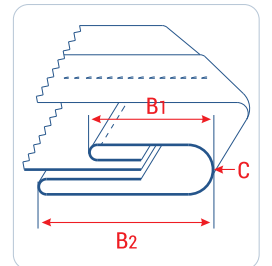
Makina / Machine :
•Düz Makina
Lockstitch Machine
•Lastik Makinası
Multi Needle Machine
•Çift İğne Kilit Dikiş Makinası
Two Needle Lockstitch Machine

A	60	65	70	75	80	85	90	95	100	110
B	20	22	25	27	30	32	35	38	40	42
C	M									
D	20	25	30	35						
E	10	12	15	17						

UMA-165-G

Gizli Dikiş Ön Pat Aparatı

Invisible Stitch Front Placket Folder



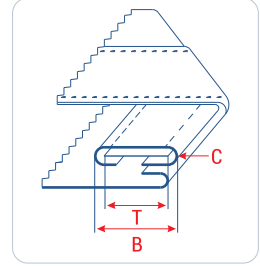
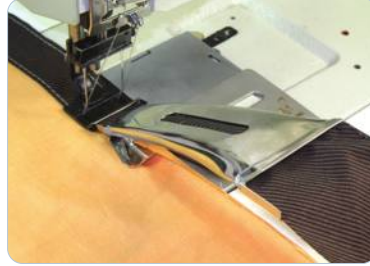
Makina / Machine :
•Düz Makina
Lockstitch Machine
•Lastik Makinası
Multi Needle Machine
•Çift İğne Kilit Dikiş Makinası
Two Needle Lockstitch Machine

A	90	115	135
B1	20	25	30
B2	35	46	56
C	M		

UMA-166

Telalı Ön Pat Aparatı

Front Placket Folder with Interlining



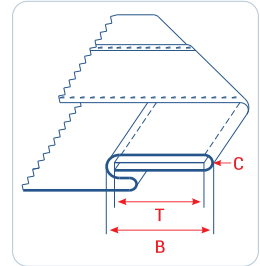
Makina / Machine :
•Çift İğne Kilit Dikiş Makinası
Two Needle Lockstitch Machine

A	50	55	60	62
B	28	35	38	40
T	26	33	36	38
C	M			

UMA-176-C

Kanun Pat Aparatı

Imitation Placket Folder



Makina / Machine :
•Çift İğne Kilit Dikiş Makinası
Two Needle Lockstitch Machine

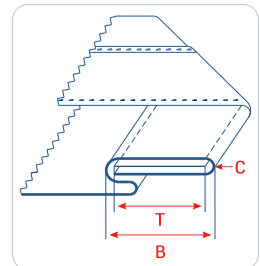
B	25	28	30	32	35
N	5/8"	3/4"	3/4"	7/8"	1"
T	22	25	27	29	32
C	M				

* Havalı model / Air type : UMA-176-CH

UMA-176-K

Kanun Pat Aparatı

Imitation Placket Folder



Makina / Machine :
•Lastik Makinası
Multi Needle Machine

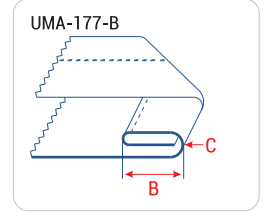
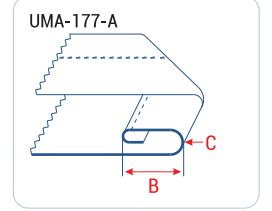
B	25	28	30	32	35
N	5/8"	3/4"	3/4"	7/8"	1"
T	22	25	27	29	32
C	M				

* Havalı model / Air type : UMA-176-KH

UMA-177

Ön Pat Aparatı

Front Placket Folder



Makina / Machine :
•Düz Makina
Lockstitch Machine

UMA-177-A B 20-10 22-10 25-10 28-10 30-10 32-10 35-10

C L

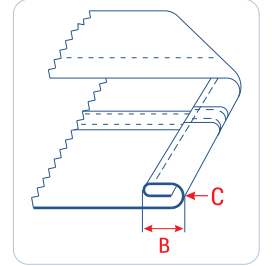
UMA-177-B B 20-20 22-22 25-25 28-28 30-30 32-32 35-35

* Havalı model / Air type : UMA-177-H

UMA-180

Denim Etek Kıvrma Aparatı

Denim Fabric Bottom Hemmer



Makina / Machine :
•Düz Makina
Lockstitch Machine

B 6 8 10

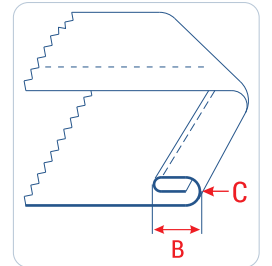
C H

* Set içeriği ; aparat, ayak.
Set includes ; attachment, foot.

UMA-182

Etek Kıvrma Aparatı

Bottom Hemmer



Makina / Machine :
•Düz Makina
Lockstitch Machine

B 3 4 5 6 7 8

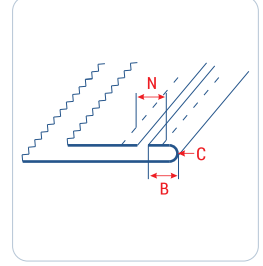
C L

* Set içeriği ; aparat, ayak.
Set includes ; attachment, foot.

UMA-184

Bos Aparatı

Armhole Attachment



Makina / Machine :
•Çift İğne Zincir Dikiş Makinası
Two Needle Chainstitch Machine

B 5 6

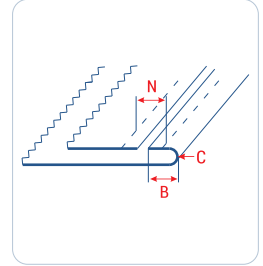
N 3/8"

C L

UMA-185

Bos Aparatı

Armhole Attachment



Makina / Machine :
•Çift İğne Zincir Dikiş Makinası
Two Needle Chainstitch Machine

B 5 6

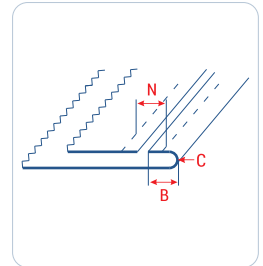
N 3/8"

C L

UMA-185-C

Bos Aparatı

Armhole Attachment



Makina / Machine :
•Çift İğne Kilit Dikiş Makinası
Two Needle Lockstitch Machine

B 5 6

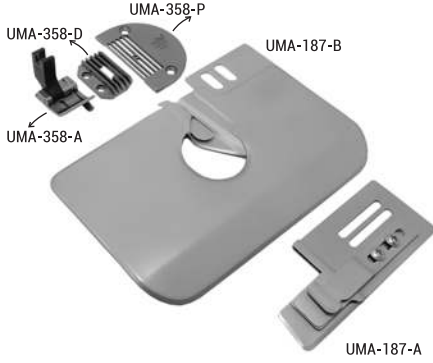
N 3/8"

C L

UMA-187

Bos Aparat Seti

Armhole Attachment Set

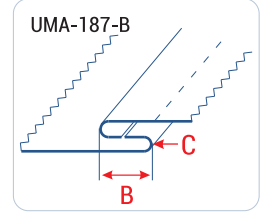
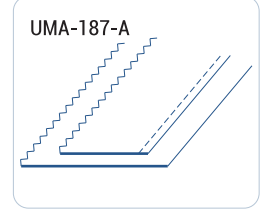


Makina / Machine :
•Düz Makina
Lockstitch Machine

UMA-187-B



B	8	9	10
C	L		

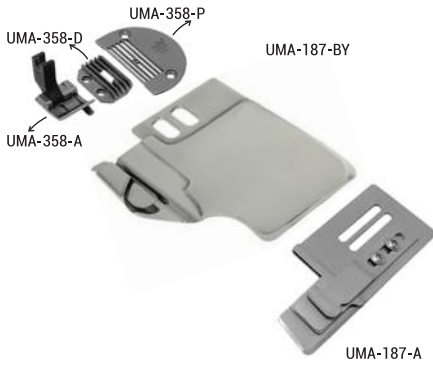


- * Set içeriği ; aparat, plaka, dişli, ayak.
Set includes ; attachment, plate, feed dog, foot.
- * Havalı model / Air type : **UMA-187-H**

UMA-187-Y

Bos Aparat Seti

Armhole Attachment Set

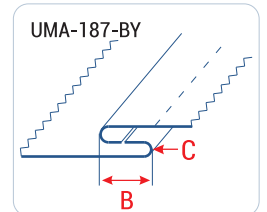
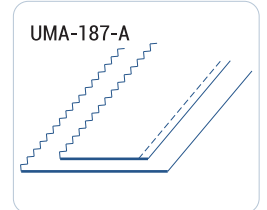


Makina / Machine :
•Düz Makina
Lockstitch Machine

UMA-187-BY



B	8	9	10
C	L		

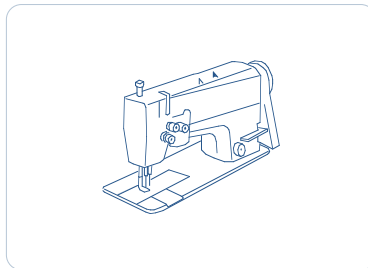


- * Set içeriği ; aparat, plaka, dişli, ayak.
Set includes ; attachment, plate, feed dog, foot.
- * Havalı model / Air type : **UMA-187-Y-H**

UMA-188

Bos Tela Takma Aparat Seti

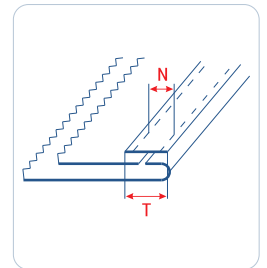
Armhole Attachment Set with Interlining



Makina / Machine :
•Çift İğne Kilit Dikiş Makinası
Two Needle Lockstitch Machine
•Çift İğne Zincir Dikiş Makinası
Two Needle Chainstitch Machine



T	10	13
N	1/4 3/8"	

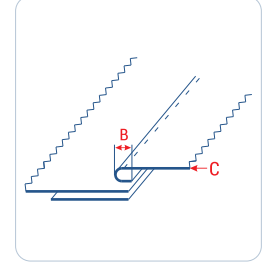


- * Set içeriği ; aparat, ayak.
Set includes ; attachment, foot.

UMA-192

Havalı Roba Aparat Seti

Back Yoke Attachment Set with Air



- * Set içeriği; aparat, ayak, dişli, plaka, hava ekipmanları.
Set includes; attachment, foot, feed dog, plate, air equipments.
- * Havaşız model / Non-Air type : UMA-192-M

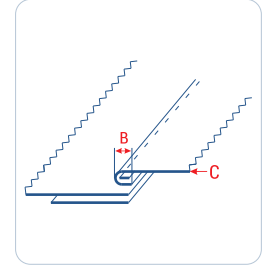
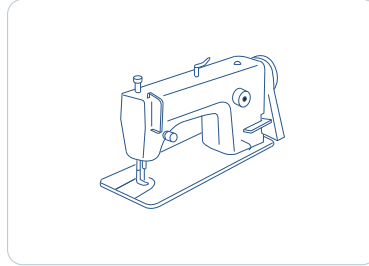
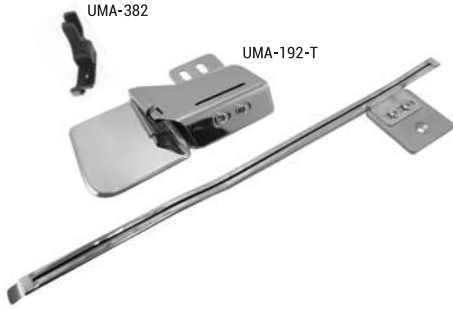
Makina / Machine :
•Düz Makina
Lockstitch Machine

B 10
C L

UMA-192-T

Telalı Roba Aparat Seti

Back Yoke Attachment Set with Interlining



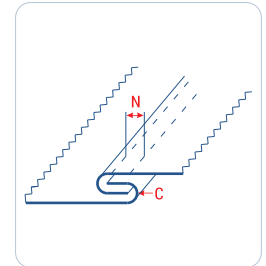
Makina / Machine :
•Düz Makina
Lockstitch Machine

B 10
C L
T 9

UMA-201

Yan Çatma Aparatı

Lap Seam Folder



Makina / Machine :
•Brother Kollu Çift İğne Makinası
Brother 2-Needle Feed off the Arm Machine

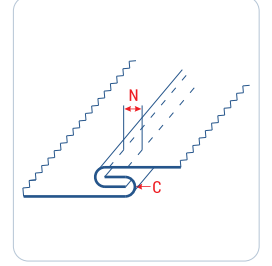
N 1/8" 3/16" 1/4"
C M

- * Brother Kollu
- * Havalı model / Air type : UMA-201-H

UMA-202

Yan Çatma Aparatı

Lap Seam Folder



Makina / Machine :
•Juki Kollu Çift İğne Makinası
Juki 2-Needle Feed off the Arm Machine

N 1/8" 3/16" 1/4"

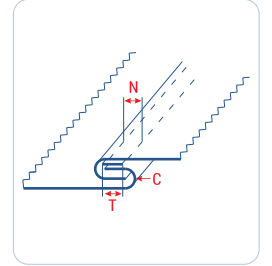
C M

* Juki Kollu
* Havalı model / Air type : UMA-202-H

UMA-202-T

Telalı Yan Çatma Aparatı Seti

Lap Seam Folder Set with Interlining



Makina / Machine :
•Kollu Çift İğne Makinası
2-Needle Feed off the Arm Machine

N 1/8" 3/16"

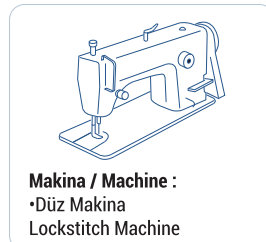
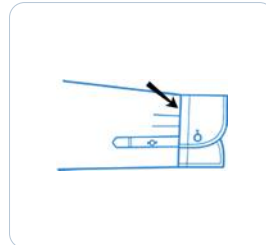
T 5 7

C L

UMA-205

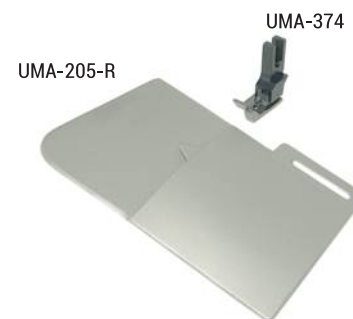
Manşet Kapama Aparatı

Cuff Attachment



* Set içeriği; aparat, ayak.
Set includes; attachment, foot.

Makina / Machine :
•Düz Makina
Lockstitch Machine

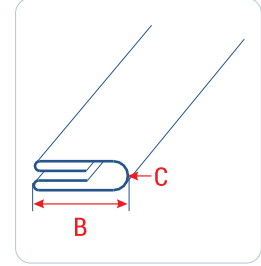
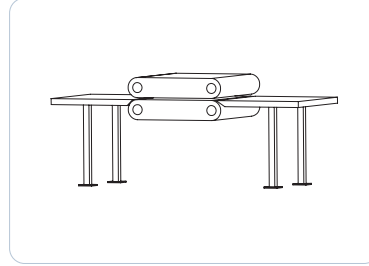


* Set içeriği; aparat, ayak.
Set includes; attachment, foot.

UMA-206

Havalı Apartura Aparatı

Pneumatic Sleeve Placket Folder



Makina / Machine :
•Tela Presi
Fusing Machine

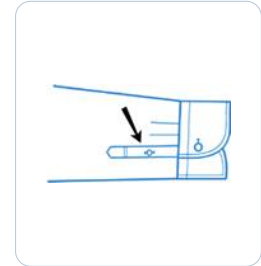
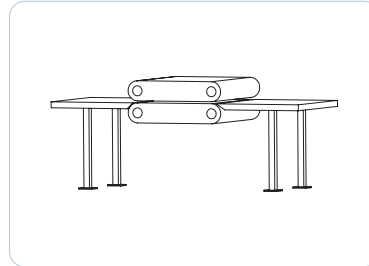
A	30	32	35
B	8	9	10
C	M		

* Havasız model / Non-Air type : UMA-206-M

UMA-207

Apartura Hazırlama Aparat Seti

Sleeve Placket Preparation Attachment Set



Makina / Machine :
•Tela Presi
Fusing Machine

A	70
B	25
C	M

UMA-210

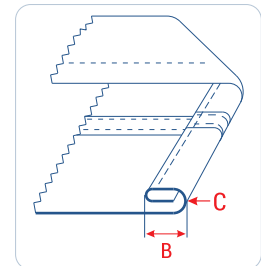
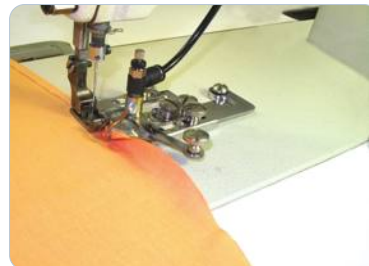
Havalı Etek Kıvrırma Aparat Seti

Bottom Hemming Folder Set with Air



•Düz Makina
Locktitch Machine

•Ayak Transportlu Düz Makina
Bottom-Top Feed Lockstitch Machine



Makina / Machine :
•Düz Makina
Locktitch Machine
•Ayak Transportlu Düz Makina
Bottom-Top Feed Lockstitch Machine

B	3	4	5	6	7	8
C	L					

* Set içeriği; aparat, ayak, dişli, plaka, hava ekipmanları.
Set includes; attachment, foot, feed dog, plate, air equipments.

UMA-210-B

Pistonlu Havalı Etek Kıvrırma Aparat Seti

Pneumatic Bottom Hemming Folder Set with Air

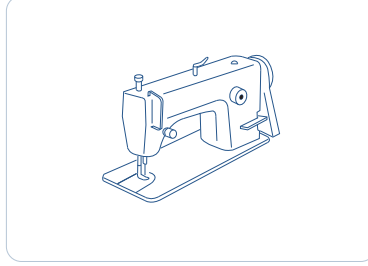


UMA-210-B



* Set içeriği; aparat, ayak, dişli, plaka, hava ekipmanları.

Set includes; attachment, foot, feed dog, plate, air equipments.

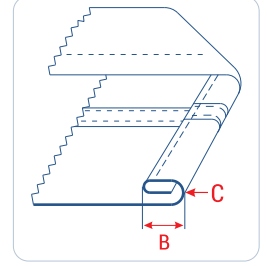


Makina / Machine :
•Ayak Transportlu Düz Makina
Bottom-Top Feed Lockstitch Machine



B 5 6

C L



UMA-211

Havalı Omuz Çatma Aparat Seti

Shoulder Top Stitch Attachment Set with Air

UMA-374

UMA-211



* Set içeriği; aparat, ayak, dişli, plaka, hava ekipmanları.

Set includes; attachment, foot, feed dog, plate, air equipments.

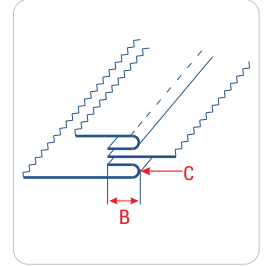


Makina / Machine :
•Düz Makina
Lockstitch Machine



B 10

C L



UMA-211-A

Arabiyeli Havalı Omuz Çatma Aparat Seti

Shoulder Top Stitch Attachment Set with Piping with Air

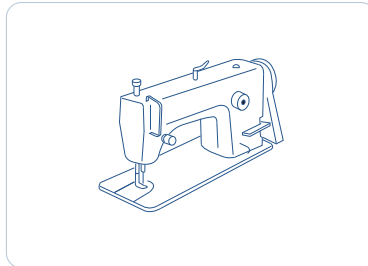
UMA-374

UMA-211-A



* Set içeriği; aparat, ayak, dişli, plaka, hava ekipmanları.

Set includes; attachment, foot, feed dog, plate, air equipments.



Makina / Machine :
•Düz Makina
Lockstitch Machine

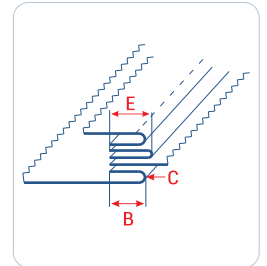


B 10

C L

D 20

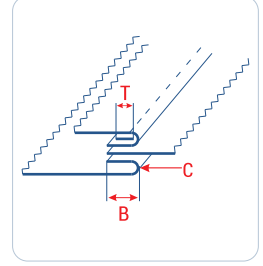
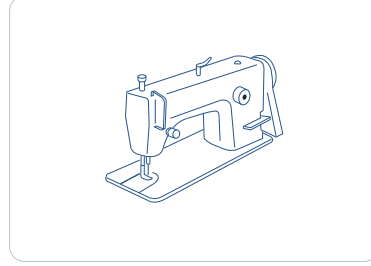
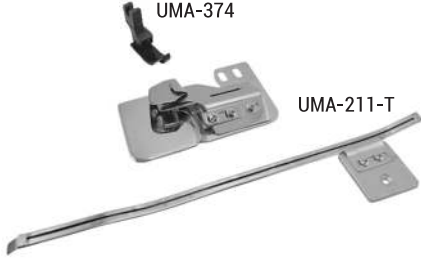
E 10



UMA-211-T

Telalı Omuz Çatma Aparat Seti

Shoulder Top Stitch Attachment Set with Interlining with Air

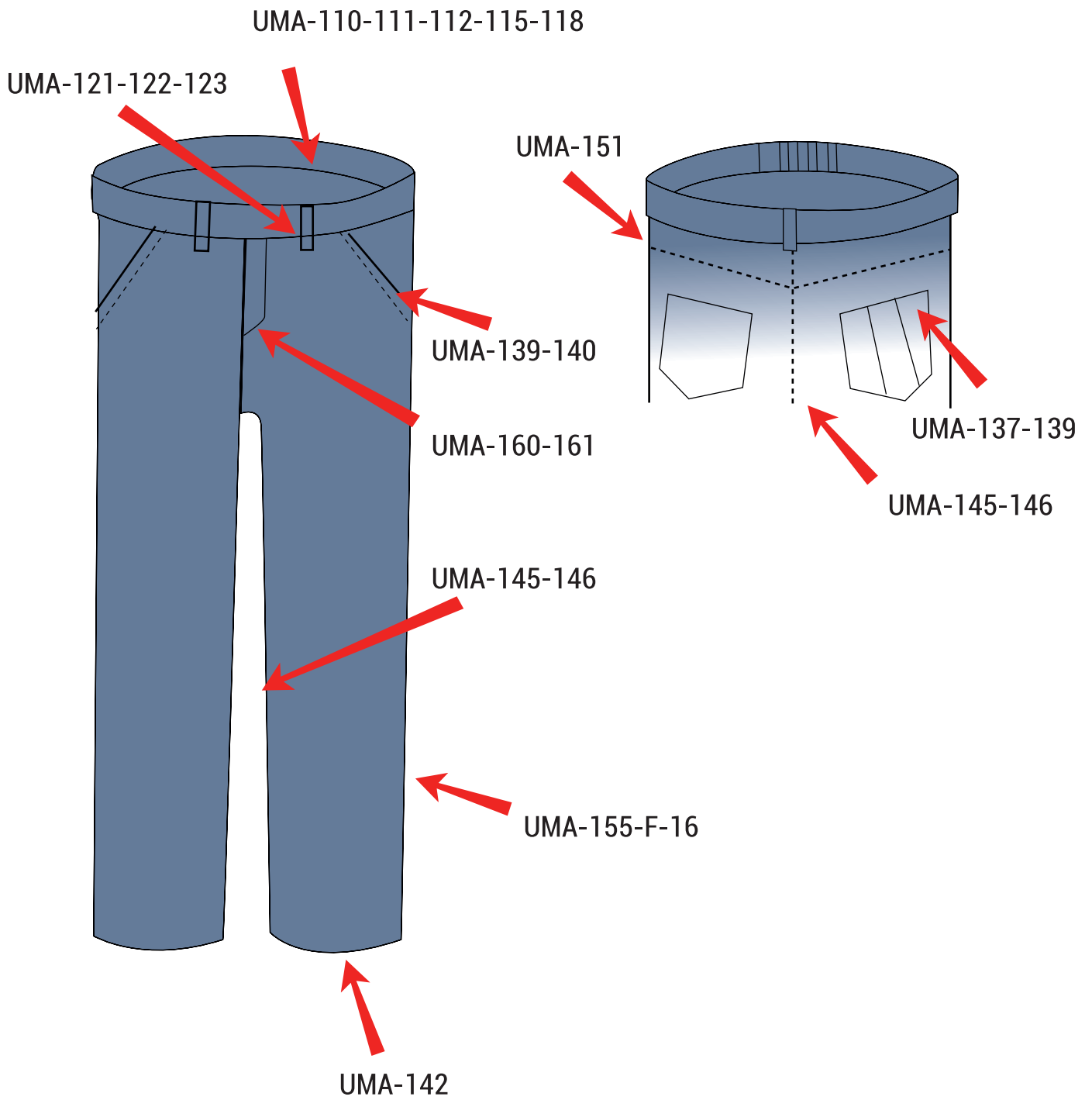


Makina / Machine :
•Düz Makina
Lockstitch Machine

B 10

T 10

C L



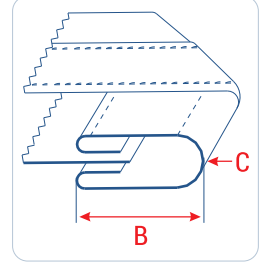
UMA-110

Kemer Aparatı

Waistband Folder



Makina / Machine :
•Kemer Makinası
Waistband Machine



A	80	85	90	95	100	110	115	120	125	135	145
B	30	32	35	38	40	42	45	50	50	55	60
C	H XH										

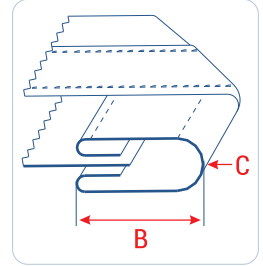
UMA-110-KD

İnce Kumaş Kemer Aparatı

Light Fabric Waisband Folder



Makina / Machine :
•Kemer Makinası
Waistband Machine

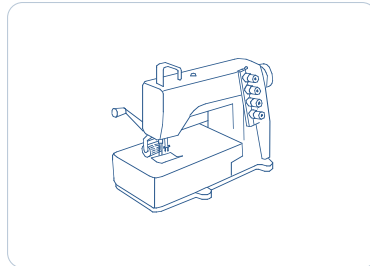


A	80	85	90	95	100	110	115	120	125	135	145
B	30	32	35	38	40	42	45	50	50	55	60
C	M MH H										

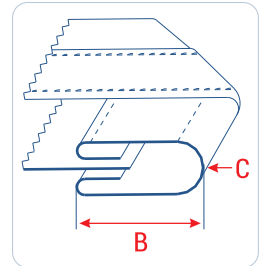
UMA-110-O

Otomat Kemer Aparatı

Waistband Folder



Makina / Machine :
•Kemer Otomatı
Waistband Automat
Juki, Vibemac, Singer, Kansai, Sip Italy

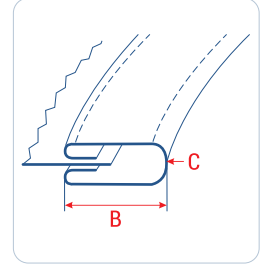


A	80	85	90	95	100	110	115	120	125	135	145
B	30	32	35	38	40	42	45	50	50	55	60
C	M H XH										

UMA-110-K

Kavisli Kemer Aparatı

Curved Waistband Folder



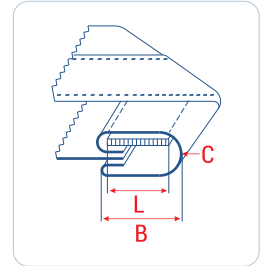
Makina / Machine :
•Kemer Makinası
Waistband Machine

A	80	85	90	95	105	110	115	125
B	30	32	35	38	40	42	45	50
C	M H XH							

UMA-110-L

Lastikli Kemer Aparatı

Waistband Folder with Elastic



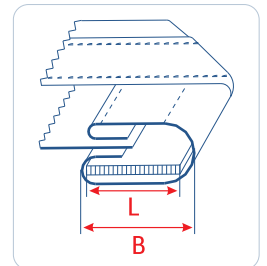
Makina / Machine :
•Kemer Makinası
Waistband Machine

A	80	85	90	95	100	110	115	125
B	30	32	35	38	40	42	45	50
L	28	30	33	36	38	40	43	48
C	M H XH							

UMA-110-LS

Parça Lastikli Kemer Aparatı

Waistband Folder with Pieced Elastic



Makina / Machine :
•Kemer Makinası
Waistband Machine

A	80	85	90	95	100	110	115
B	30	32	35	38	40	42	45
C	M H XH						

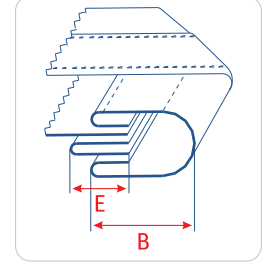
UMA-110-A

Arabiyeli Kemer Aparatı

Waistband Folder with Piping



Makina / Machine :
•Kemer Makinası
Waistband Machine



A	80	85	90	95	105	110	115	125
B	30	32	35	38	40	42	45	50
C	M H XH							
D	25	30	35					
E	12,5	15	17					

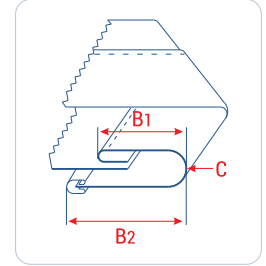
UMA-111

Tek Kıvrıma Kemer Aparatı

Single Fold Waistband Folder



Makina / Machine :
•Kemer Makinası
Waistband Machine

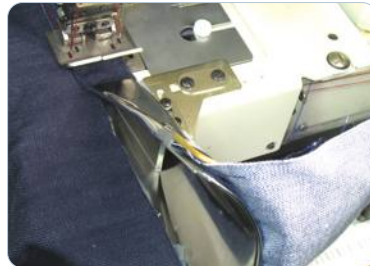


A	80	85	90	95	100	110	115	125
B1	30	32	35	38	40	42	45	50
B2	40	42	45	48	50	55	57	62
C	M H XH							

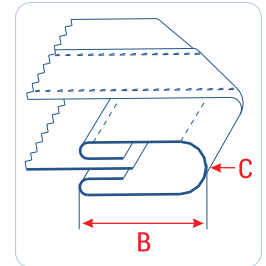
UMA-112

Kemer Aparatı

Waistband Folder



Makina / Machine :
•Kemer Makinası
Waistband Machine

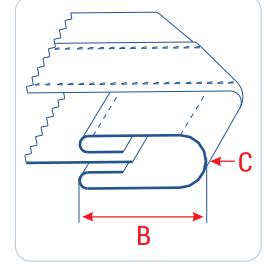
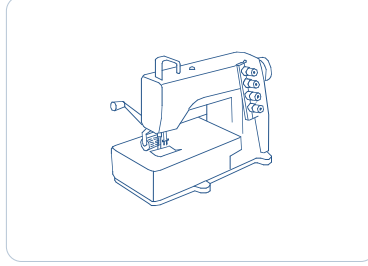


A	70	80	85	90	95	100	110	115	125	135
B	25	30	32	35	38	40	42	45	50	55
C	M H XH									

UMA-112-L

Levi's Kemer Aparatı

Levi's Type Waistband Folder



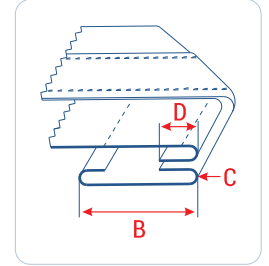
Makina / Machine :
 •Kemer Otomati
 Waistband Automat
 Brother, Juki, Vibemac, Singer
 Kansai, Sip Italy

A	90	95	100	105	110	120	130
B	35	38	40	41	42	45	50
C	H XH						

UMA-114

Beden Katlamalı Kemer Aparatı

Waistband Folder



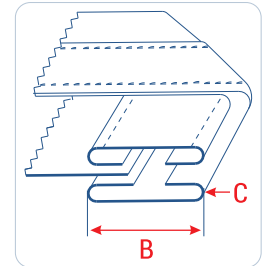
Makina / Machine :
 •Kemer Makinası
 Waistband Machine
 •Lastik Makinası
 Multi Needle Machine

A	50	55	62	65	70	72
B	30	32	36	38	40	42
C	M H XH					
D	12					

UMA-115

Çiftli Kemer Aparatı

Two Piece Waistband Folder



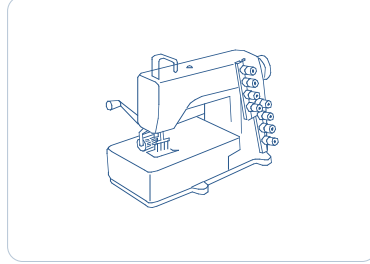
Makina / Machine :
 •Kemer Makinası
 Waistband Machine
 •Lastik Makinası
 Multi Needle Machine

A	55	60	62	65	70	72	75	80	85	90	100
B	30	32	35	38	40	42	45	50	55	60	70
C	M H XH										

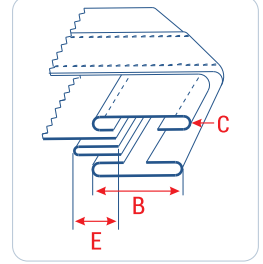
UMA-115-A

Arabiyeli Çiftli Kemer Aparatı

Two Piece Waistband Folder with Piping



Makina / Machine :
 •Kemer Makinası
 Waistband Machine
 •Lastik Makinası
 Multi Needle Machine



A	62	65	70	72	75	80	85	90	95	100
---	----	----	----	----	----	----	----	----	----	-----

B	36	38	40	42	45	50	55	60	65	70
---	----	----	----	----	----	----	----	----	----	----

C	M	H	XH
---	---	---	----

D	25	30	35
---	----	----	----

E	12,5	15	17
---	------	----	----

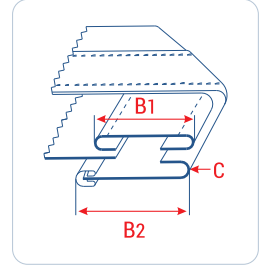
UMA-115-T

Tek Kıvrırma Çiftli Kemer Aparatı

Single Fold Two Piece Waistband Folder



Makina / Machine :
 •Kemer Makinası
 Waistband Machine
 •Lastik Makinası
 Multi Needle Machine



A	62	65	70	72	75	80	85	90
---	----	----	----	----	----	----	----	----

B1	36	38	40	42	45	50	55	60
----	----	----	----	----	----	----	----	----

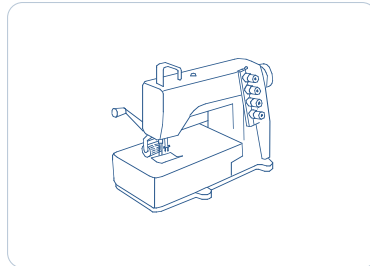
B2	46	48	52	54	57	62	67	72
----	----	----	----	----	----	----	----	----

C	M	H	XH
---	---	---	----

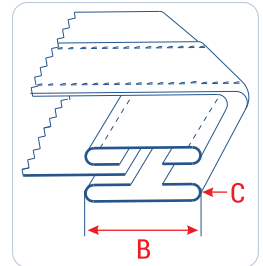
UMA-115-O

Çiftli Kemer Aparatı

Two Piece Waistband Folder



Makina / Machine :
 •Kemer Otomatı
 Waistband Automat
 Brother, Juki, Vibemac, Singer
 Kansai, Sip Italy



A	62	65	70	72	75	80	85	90
---	----	----	----	----	----	----	----	----

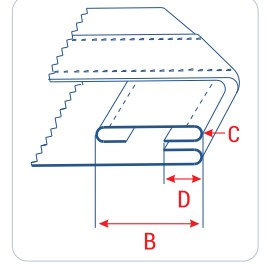
B	36	38	40	42	45	50	55	60
---	----	----	----	----	----	----	----	----

C	M	H	XH
---	---	---	----

UMA-116

Takma Kemer Aparatı

Waistband Folder



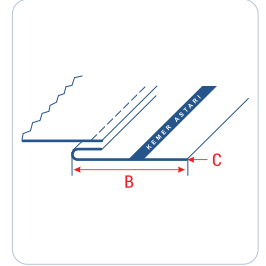
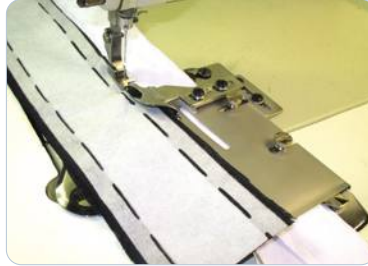
Makina / Machine :
•Lastik Makinası
Multi Needle Machine

A	60	65	70	72	75
B	35	38	40	42	45
D	10				
C	M MH H				

UMA-117

Astarı Kemere Takma Aparatı

Ready Made Waistband Folder



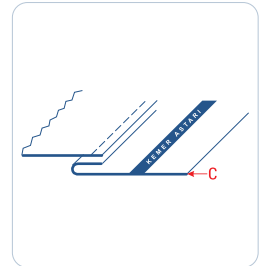
Makina / Machine :
•Düz Makina
Lockstitch Machine

A	50	55	60	65	70	75
B	40	45	50	55	60	65
C	M H					

UMA-117-A

Ayarlı Astarı Kemere Takma Aparatı

Adjustable Ready Made Waistband Folder



Makina / Machine :
•Düz Makina
Lockstitch Machine

A	50~70				
C	H				

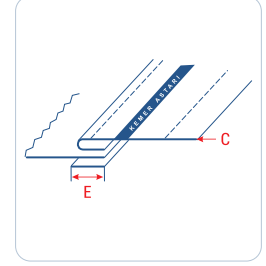
UMA-117-K

Alttan Tarlatanlı Ayarlı Astarı Kemere
Takma Aparatı

Ready Made Waistband Folder
with Bottom Tarlatan



Makina / Machine :
•Lastik Makinası
Multi Needle Machine

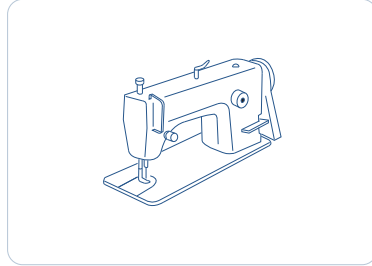


A	50~70
E	10
C	H

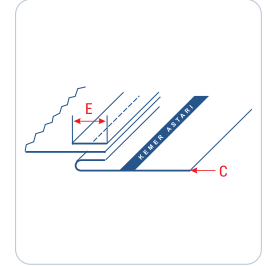
UMA-117-T

Üstten Tarlatanlı Ayarlı Astarı Kemere
Takma Aparatı

Ready Made Waistband Folder
with Upper Tarlatan



Makina / Machine :
•Düz Makina
Lockstitch Machine



A	50~70
E	10
C	H

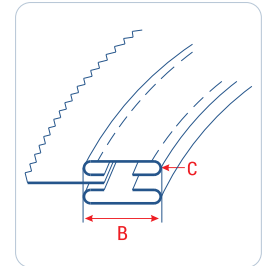
UMA-118

Kavisli Kemer Aparatı

Curved Waistband Folder



Makina / Machine :
•Kot Kemer Makinası
Waistband Machine
•Lastik Makinası
Multi Needle Machine

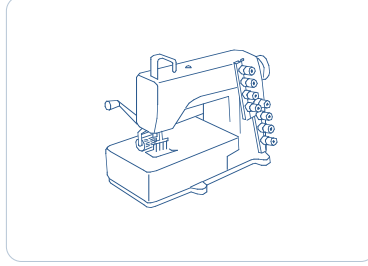
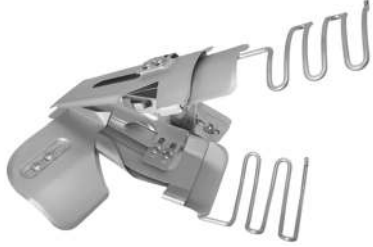


A	62 65 70 72 75 80 85 90 95 100
B	36 38 40 42 45 50 55 60 65 68
C	M H XH

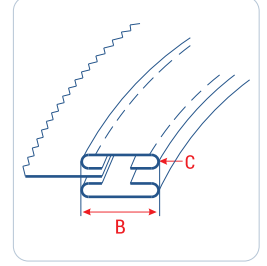
UMA-118-L

Levi's Kavisli Kemer Aparatı

Levi's Type Curved Waistband Folder



Makina / Machine :
 •Kemer Otomati
 Waistband Automat
 Brother, Juki, Vibemac, Singer
 Kansai, Sip Italy



A	66	70	75	80
B	41	42	51	50
C	M	H	XH	

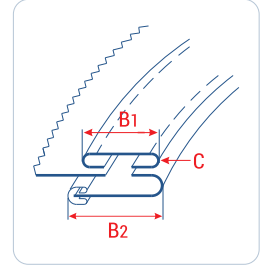
UMA-118-T

Tek Kıvrırma Kavisli Kemer Aparatı

Single Fold Curved Waistband Folder



Makina / Machine :
 •Kemer Makinası
 Waistband Machine
 •Lastik Makinası
 Multi Needle Machine



A	62	65	70	72	75	80	85	90
B	36	38	40	42	45	50	55	60
C	46	48	52	54	55	62	67	72
C	M	H	XH					

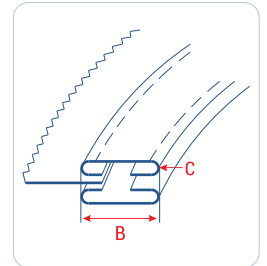
UMA-118-O

Kavisli Kemer Aparatı

Curved Waistband Folder



Makina / Machine :
 •Kemer Otomati
 Waistband Automat
 Juki, Vibemac, Singer
 Kansai, Sip Italy

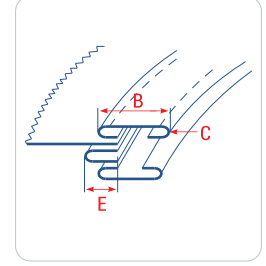


A	62	65	70	72	75	80	85	90
B	36	38	40	42	45	50	55	60
C	M	H	XH					

UMA-118-A

Arabiyeli Kavisli Kemer Aparatı

Curved Waistband Folder with Piping



Makina / Machine :
 •Kemer Makinası
 Waistband Machine
 •Lastik Makinası
 Multi Needle Machine

A	62	65	70	72	75	80	85	90
---	----	----	----	----	----	----	----	----

B	36	38	40	42	45	50	55	60
---	----	----	----	----	----	----	----	----

C	M	H	XH
---	---	---	----

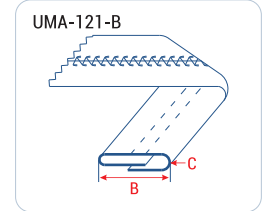
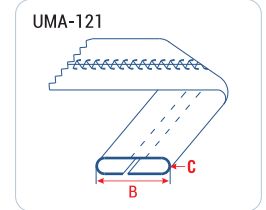
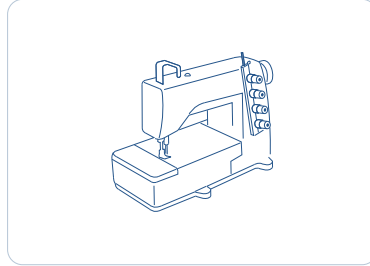
D	25	30	35
---	----	----	----

E	12,5	15	17
---	------	----	----

UMA-121

Köprü Aparatı

Belt Loop Folder



Makina / Machine :
 •Köprü Makinası
 Belt Loop Machine

UMA-121	A	20	25	30	35	40
---------	---	----	----	----	----	----

UMA-121	B	10	12,5	15	17,5	20
---------	---	----	------	----	------	----

C	M	H	XH
---	---	---	----

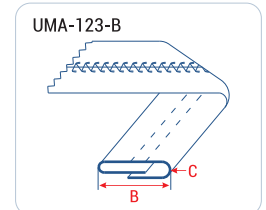
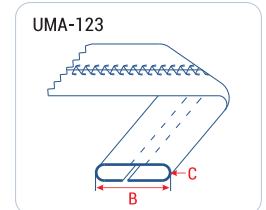
UMA-121-B	A	25	30	35	40
-----------	---	----	----	----	----

UMA-121-B	B	10	12	15	17
-----------	---	----	----	----	----

UMA-123

Köprü Aparatı

Belt Loop Folder



Makina / Machine :
 •Reçme Makinası
 Coverstitch Machine

UMA-123	A	20	25	30	35	40	50	60
---------	---	----	----	----	----	----	----	----

UMA-123	B	10	12,5	15	17,5	20	25	30
---------	---	----	------	----	------	----	----	----

C	M	H	XH
---	---	---	----

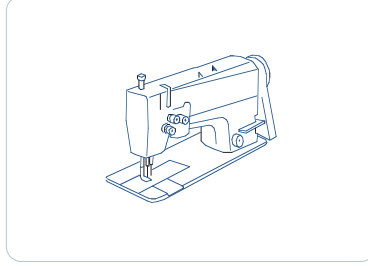
UMA-123-B	A	25	30	35	40	45	50	60
-----------	---	----	----	----	----	----	----	----

UMA-123-B	B	10	12	15	17	20	22	25
-----------	---	----	----	----	----	----	----	----

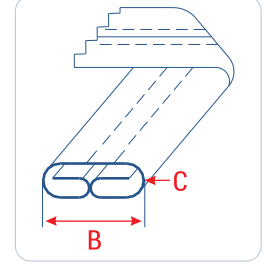
UMA-124

Temiz Katlama Köprü Aparatı

Clean Finish Belt Loop Folder



Makina / Machine :
•Çift İğne Kilit Dikiş Makinası
Two Needle Lockstitch Machine

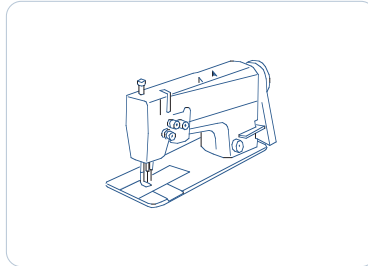


A	28	34	37	42	48	55
B	10	12	13	15	17	20
C	M H XH					

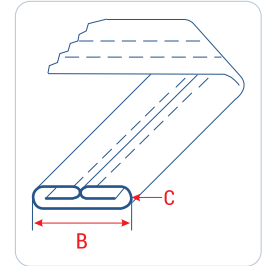
UMA-126

Temiz Katlama Köprü Aparatı

Clean Finish Belt Loop Folder



Makina / Machine :
•Çift İğne Kilit Dikiş Makinası
Two Needle Lockstitch Machine

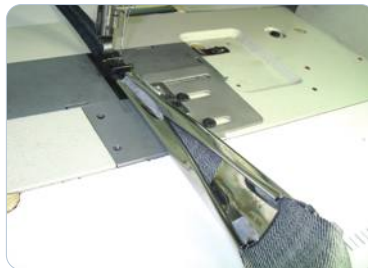


A	28	34	37	42	48	55
B	10	12	13	15	17	20
C	M H XH					

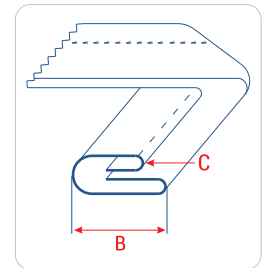
UMA-127

Temiz Katlama Köprü Aparatı

Clean Finish Belt Loop Folder



Makina / Machine :
•Çift İğne Kilit Dikiş Makinası
Two Needle Lockstitch Machine
•Düz Makina
Lockstitch Machine

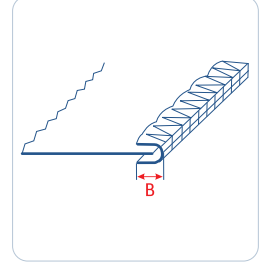


A	30	38	40	45	50	55	60
B	10	12	13	15	17	18	20
C	M H XH						

UMA-130

Örgü İçi Cep Torba Aparatı

Pocket Binder



Makina / Machine :
•Cep Overlok Makinası
Pocket Overlock Machine
Juki, Kingtex

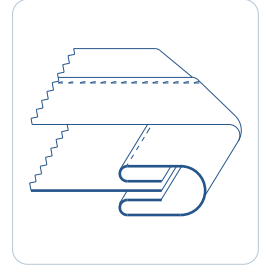
A 10

B 5

UMA-131

Cep Torba Biye Aparatı

Pocket Tape Binder



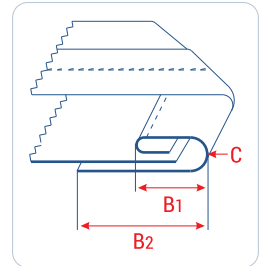
Makina / Machine :
•Cep Overlok Makinası
Pocket Overlock Machine
Yamato, Siruba, Juki, Pegasus,
Kingtex

A 22 25 28 30

UMA-133

Kemer Kenar Biye Aparatı

Waistband Tape Binder



Makina / Machine :
•Çift İğne Kilit Dikiş Makinası
Two Needle Lockstitch Machine
•Düz Makina
Lockstitch Machine

A 25 30

B1 5 6

B2 15 19

C M

* Set içeriği; aparat, ayak.
Set includes; attachment, foot.

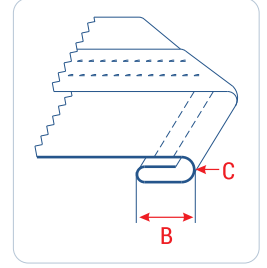
UMA-137

Arka Cep Ağız Kıvrırma Aparatı

Down Turn Hemmer for Back Pocket



Makina / Machine :
•Çift İğne Kilit Dikiş Makinası
Two Needle Lockstitch Machine



B 10 12 15

C H XH

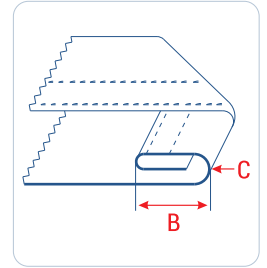
UMA-139

Ön Cep Ağız Kıvrırma Aparatı

Up Turn Hemmer for Front Pocket



Makina / Machine :
•Çift İğne Kilit Dikiş Makinası
Two Needle Lockstitch Machine



B 8 10 12

C H XH

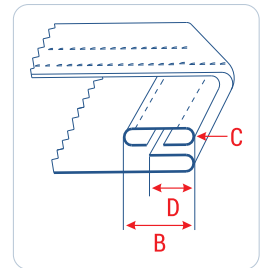
UMA-140

Şeritli Ön Cep Ağız Aparatı

Up Turn Hemmer for Front Pocket with Tape Binder



Makina / Machine :
•Çift İğne Kilit Dikiş Makinası
Two Needle Lockstitch Machine



A 18 20 25

B 9 10 12,5

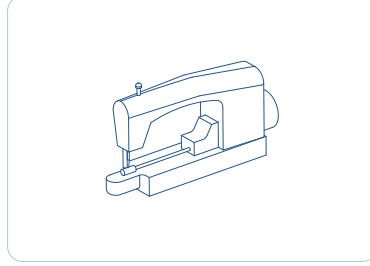
D 8 9 10

C M

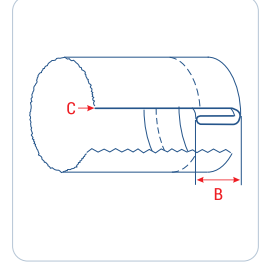
UMA-142

Kot Paça Kıvrırma Aparatı

Denim Down Turn Cuff Hemmer



Makina / Machine :
•Paça Makinası
Bottom Hemming Machine



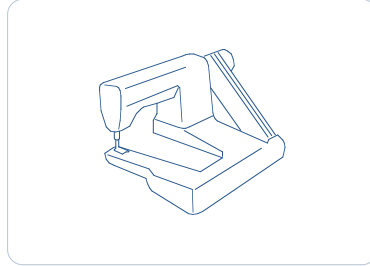
B 10~16

C H XH

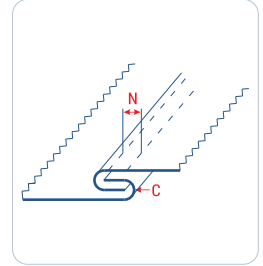
UMA-145

Arka Orta Çatma Aparatı

Lap Seam Folder for Back Seam



Makina / Machine :
•Kollu Üç İğne Makinası
3-Needle Feed off the Arm Machine
Brother, Juki, Union, Vibemac, Sip Italy



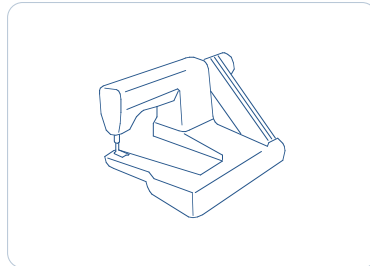
N 1/4" 5/16" 3/8" 1/2"

C H XH

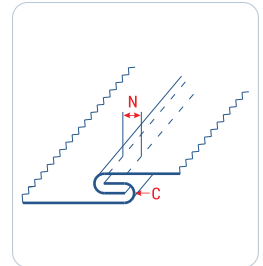
UMA-145-L

Levi's Yan Çatma Aparatı

Levi's Type Lap Seam Folder



Makina / Machine :
•Kollu Üç İğne Makinası
3-Needle Feed off the Arm Machine
Brother, Juki, Union, Vibemac, Sip Italy



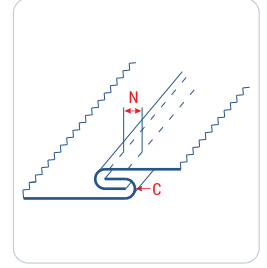
N 1/4" 5/16" 3/8" 1/2"

C H XH

UMA-146

Yan Çatma Aparatı

Lap Seam Folder



Makina / Machine :
 •Kollu Üç İğne Makinası
 3-Needle Feed off the Arm Machine
 Brother, Juki, Union, Vibemac, Sip Italy

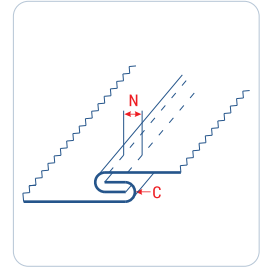
N 1/4" 5/16" 3/8" 1/2"

C M H XH

UMA-147

Yan Çatma Aparatı

Lap Seam Folder



Makina / Machine :
 •Çift İğne Kilit Dikiş Makinası
 Two Needle Lockstitch Machine

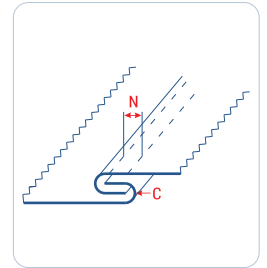
N 1/4" 5/16" 3/8"

C M H XH

UMA-148

Yan Çatma Aparatı

Lap Seam Folder



Makina / Machine :
 •Çift İğne Zincir Dikiş Makinası
 Two Needle Chainstitch Machine

N 3/16" 1/4" 5/16" 3/8" 1/2"

C M H XH

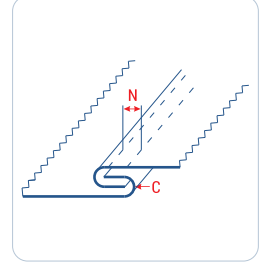
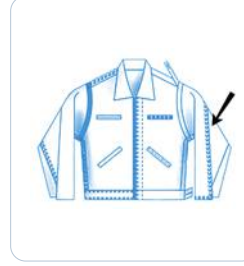
UMA-149

Arka Conta Aparatı

Back Yoke Folder



Makina / Machine :
•Çift İğne Zincir Dikiş Makinası
Two Needle Chainstitch Machine



N 1/4" 5/16"

C H XH

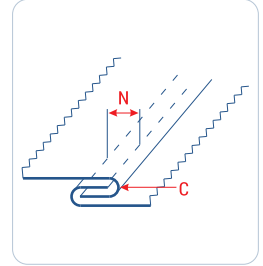
UMA-151

Ters Conta Aparatı

Back Yoke Folder



Makina / Machine :
•Çift İğne Zincir Dikiş Makinası
Two Needle Chainstitch Machine



N 1/4" 5/16" 3/8"

C H XH

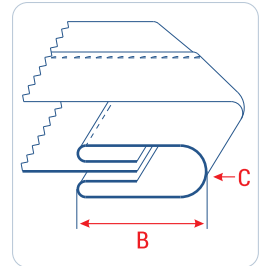
UMA-153

Biye Aparatı

Double Fold Right Angle Binder



Makina / Machine :
•Çift İğne Kilit Dikiş Makinası
Two Needle Lockstitch Machine



A 25 28 30 35 40 45 50

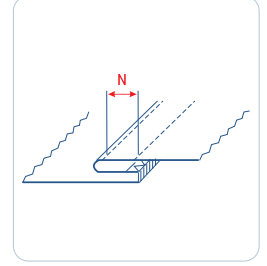
B 6 7 8 10 12 13 15

C M H

UMA-155

Overlok Dikişi Yan Baskı Aparatı

Top Stitch Guide



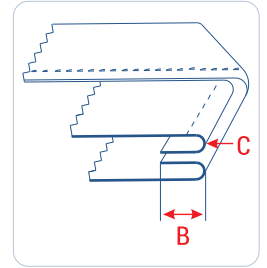
Makina / Machine :
 •Kollu Üç İğne Makinası
 3-Needle Feed off the Arm Machine
 Brother, Juki, Union, Vibemac, Sip Italy

N 1/4"

UMA-160

Fermuarlı Patlet Aparatı

Zipper Fly Attachment



Makina / Machine :
 •Düz Makina
 Lockstitch Machine

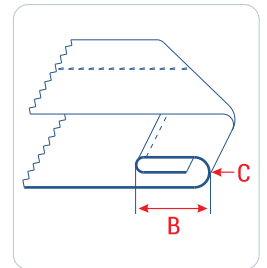
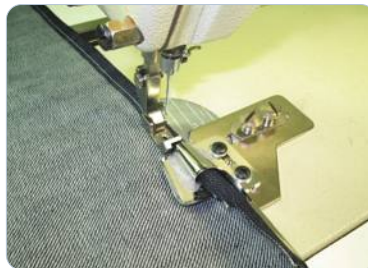
B 8 10

C M H XH

UMA-161

Düğmeli Patlet Aparatı

Button Fly Attachment



Makina / Machine :
 •Düz Makina
 Lockstitch Machine

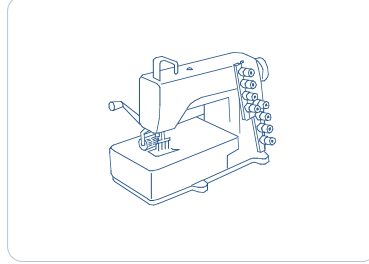
B 6 8 10

C M H XH

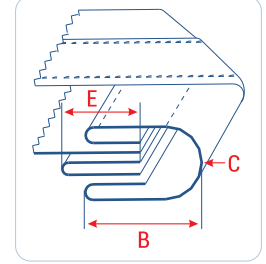
UMA-165-A

Arabiyeli İnce Kumaş Kemer Aparatı

Waistband Folder with Piping for Thin Fabric



Makina / Machine :
•Lastik Makinası
Multi Needle Machine



A	80	85	90	95	100	110
B	30	32	35	38	40	42
C	M MH					
D	25	30	35			
E	12,5	15	17			

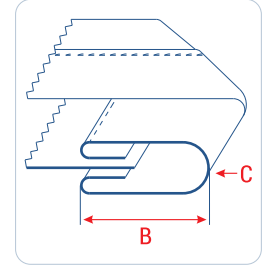
UMA-165-D

İnce Kumaş Kemer Aparatı

Waistband Folder for Thin Fabric



Makina / Machine :
•Düz Makina
Lockstitch Machine



A	60	65	70	75	80	85	90
B	20	22	25	27	30	35	35
C	M MH						

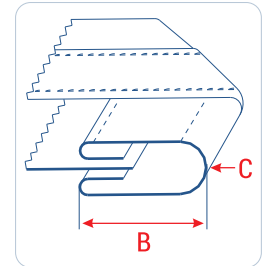
UMA-165-C

İnce Kumaş Kemer Aparatı

Waistband Folder for Thin Fabric



Makina / Machine :
•Çift İğne Kilit Dikiş Makinası
Two Needle Lockstitch Machine

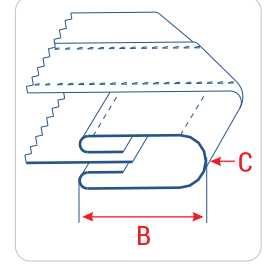


A	60	65	70	75	80	85	90	95	100
B	20	22	25	27	30	32	35	38	40
C	M MH								

UMA-165-K

İnce Kumaş Kemer Aparatı

Waistband Folder for Thin Fabric



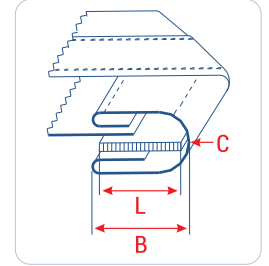
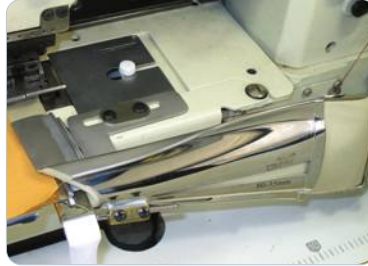
Makina / Machine :
•Lastik Makinası
Multi Needle Machine

A	60	65	70	75	80	85	90	95	100	110	115	125	135
B	20	22	25	27	30	32	35	38	40	42	45	50	55
C	M MH												

UMA-165-L

Lastikli Kemer Aparatı

Waistband Folder with Elastic



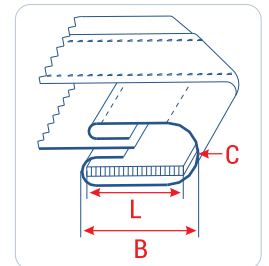
Makina / Machine :
•Lastik Makinası
Multi Needle Machine

A	80	85	90	95	100	110
B	30	32	35	38	40	42
L	28	30	32	36	38	40
C	M MH H XH					

UMA-165-LS

Parça Lastikli Kemer Aparatı

Waistband Folder with Pieced Elastic



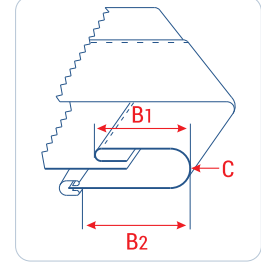
Makina / Machine :
•Lastik Makinası
Multi Needle Machine

A	80	85	90	95	100	110
B	30	32	35	38	40	42
C	M MH H XH					

UMA-165-T

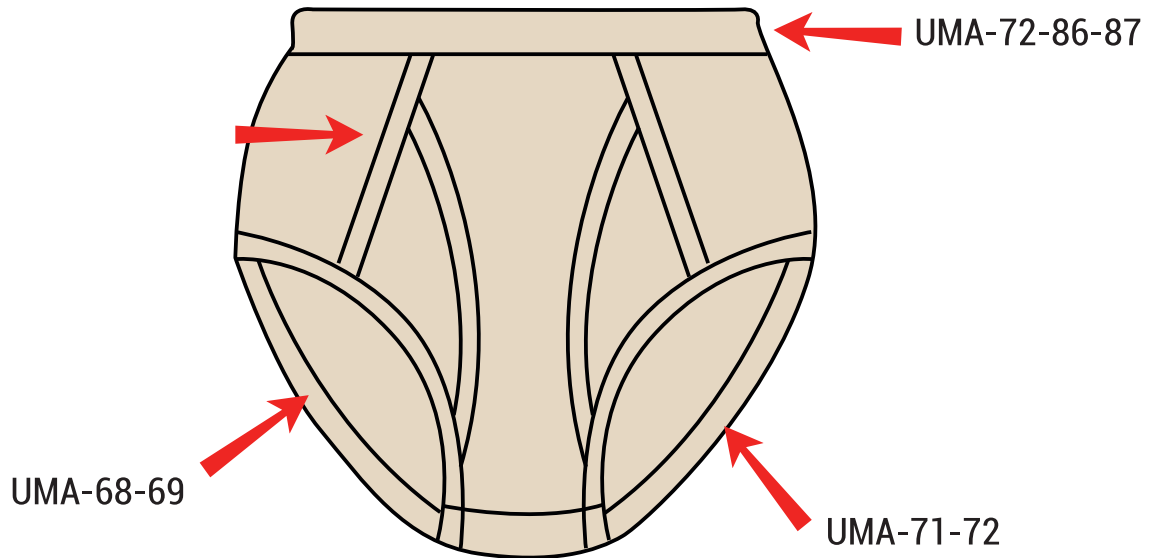
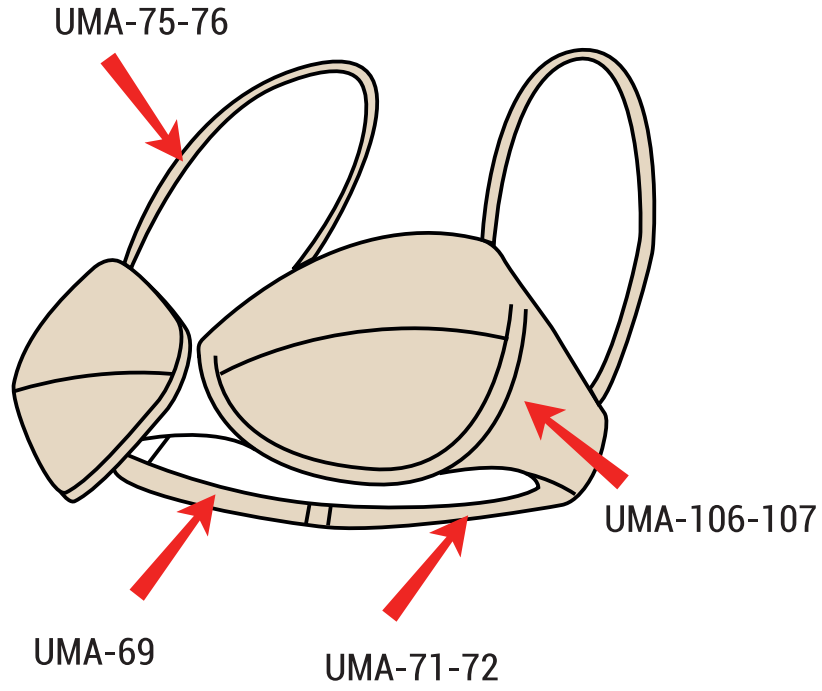
İnce Kumaş Tek Kıvrırma Kemer Aparatı

Single Fold Waistband Folder for Thin Fabric



Makina / Machine :
•Lastik Makinası
Multi Needle Machine

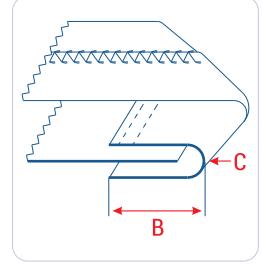
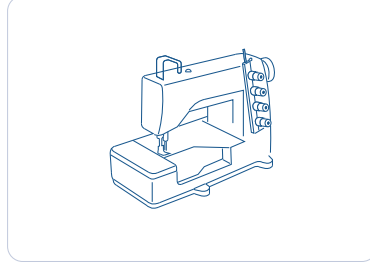
A	60	65	70	75	82	85	92	100	105	110
B1	20	22	25	27	30	32	35	38	40	42
B2	30	33	35	38	42	43	47	50	52	54
C	M MH									



UMA-01

Lastik Katlama Aparatı

Elastic Raw Edge Collarettte Binder



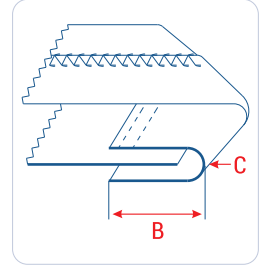
Makina / Machine :
•Sağdan Bıçaklı Reçme Makinası
Coverstitch Machine with Right Hand Fabric Trimmer

A	13	14	15	16	18	20
B	6,5	7	7,5	8	9	10
C	M					

UMA-15

Tansiyonlu Lastik Katlama Aparatı

Elastic Collarettte Binder with Tension



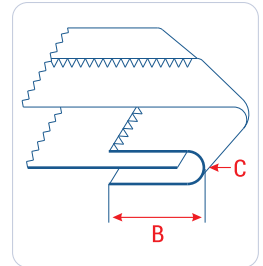
Makina / Machine :
•Bant Reçme Makinası
Coverstitch Machine for Tape Binding

A	12	14	15	16	18	20	22	25	28	30	32	35	40
B	6	7	7,5	8	9	10	11	12,5	14	15	16	17,5	20
C	M												

UMA-68

Biye İkiye Katlama Aparat Seti

Right Angle Elastic Binder Set with Tension



Makina / Machine :
•Zigzag Makinası
Zigzag Machine
Brother, Pfaff, Juki

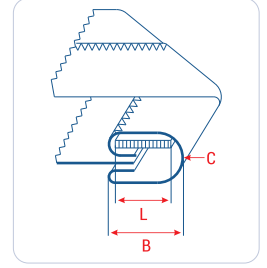
A	12	15	16	18	20	22	25
B	6	7,5	8	9	10	11	12,5
C	M						

* Set içeriği ; aparat, plaka, dişli, ayak.
Set includes; attachment, plate, feed dog, foot.

UMA-69

Lastikli Biye Çift Kıvrırma Aparat Seti

Right Angle Tape Binder Set with Elastic



Makina / Machine :
•Zigzag Makinası
Zigzag Machine
Brother, Pfaff, Juki

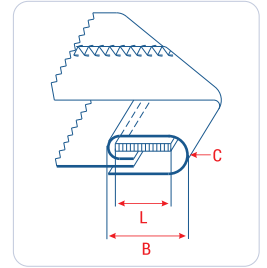
* Set içeriği; aparat, plaka, dişli, ayak.
Set includes; attachment, plate, feed dog, foot.

A	25	28	30	32	35	40
B	6	7	8	9	10	12
L	4	5	6	7	8	10
C	M					

UMA-71

Lastikli Biye Tek Kıvrırma Aparatı

Single Fold Binder with Elastic



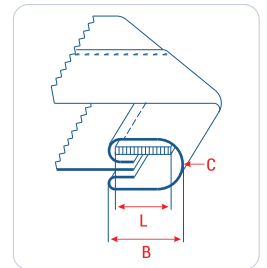
Makina / Machine :
•Bant Reçme Makinası
Coverstitch Machine for Tape Binding

A	25	28	30	32	35	40	45	50	55	60	70
B	8	9	10	12	13	15	17	20	22	25	30
L	6	7	8	10	11	13	15	18	20	23	28
C	M										

UMA-72

Lastikli Biye Çift Kıvrırma Aparatı

Double Fold Binder with Elastic



Makina / Machine :
•Bant Reçme Makinası
Coverstitch Machine for Tape Binding

A	25	28	30	32	35	40	45	50	55	60	65	70	80
B	6	7	8	9	10	12	13	15	17	20	22	25	30
L	4	5	6	7	8	10	11	13	15	18	20	23	28
C	M												

UMA-75

Spagetti Aparatı

Spagetti Attachment



* Makina üzerinde çekirme sistemi olmalıdır.
Machine should have puller system.

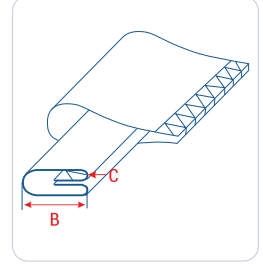
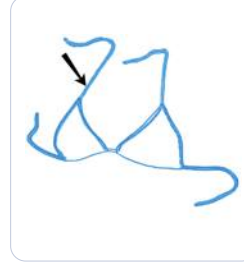


Makina / Machine :

•Overlok Makinası

Overlock Machine

Brother, Yamato, Siruba,
Juki, Pegasus



A	15	20	22	25	26	30	32	35
---	----	----	----	----	----	----	----	----

B	3	5	6	7	8	10	11	12
---	---	---	---	---	---	----	----	----

C	M
---	---

UMA-76

Lastikli Spagetti Aparatı

Spagetti Attachment with Elastic



* Makina üzerinde çekirme sistemi olmalıdır.
Machine should have puller system.

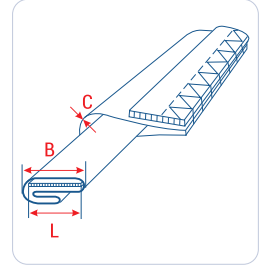


Makina / Machine :

•Overlok Makinası

Overlock Machine

Brother, Yamato, Siruba,
Juki, Pegasus



A	22	24	26	28	30	32	34	36
---	----	----	----	----	----	----	----	----

B	5	6	7	8	9	10	11	12
---	---	---	---	---	---	----	----	----

L	4	5	6	7	8	9	10	11
---	---	---	---	---	---	---	----	----

C	M
---	---

UMA-77

Lastikli Şerit Aparatı

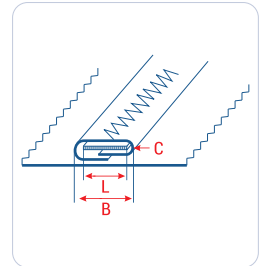
Tape Folder with Elastic



Makina / Machine :

•Etek Reçme Makinası

Coverstitch Machine



A	18	20	25	28	35
---	----	----	----	----	----

B	7	8	10	12	15
---	---	---	----	----	----

L	5	6	8	10	13
---	---	---	---	----	----

C	M
---	---

UMA-80

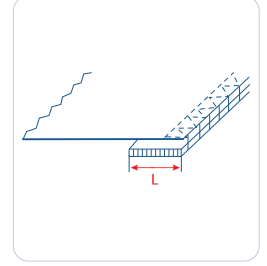
Tansiyonlu Alttan Lastik Aparatı

Adjustable Elastic Folder with Tension

UMA-80-A
Ayarlı / Adjustable



UMA-80-B
Sabit / Fixed



Makina / Machine :
•Overlok Makinası
Overlock Machine
Brother, Yamato, Siruba,
Juki, Pegasus
•Etek Reçme Makinası
Coverstitch Machine

UMA-80-A L 10~25 25~50

UMA-80-B L 5 6 7 8 9 10 12

UMA-81

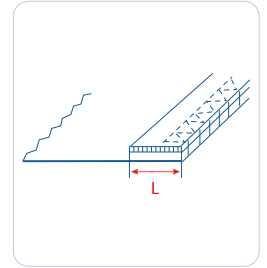
Tansiyonlu Üsten Lastik Aparatı

Adjustable Elastic Folder with Tension

UMA-81-A
Ayarlı / Adjustable



UMA-81-B
Sabit / Fixed



Makina / Machine :
•Overlok Makinası
Overlock Machine
Brother, Yamato, Siruba,
Juki, Pegasus
•Etek Reçme Makinası
Coverstitch Machine

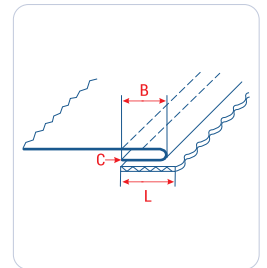
UMA-81-A L 10~25 25~50

UMA-81-B L 5 6 7 8 9 10 12

UMA-84

Lastikli Katlama Aparatı

Down Turn Elastic Hemmer



Makina / Machine :
•Etek Reçme Makinası
Coverstitch Machine

B 6 8 10

L 8 10 12

C M

UMA-86

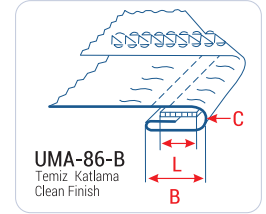
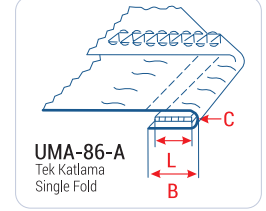
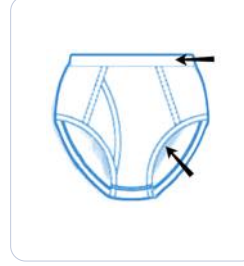
Gizli Lastik Aparatı

Down Turn Hemmer with Elastic



Makina / Machine :
•Etek Reçme Makinası
Coverstitch Machine

B	8	10	12	14	17	18	20
L	6	8	10	12	15	16	18
C	M						



UMA-87

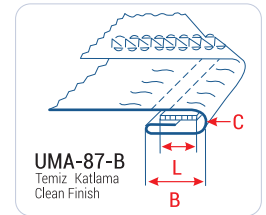
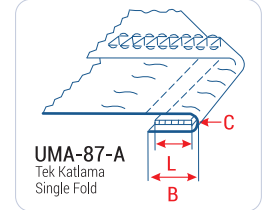
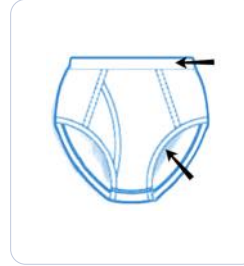
Gizli Lastik Aparatı

Down Turn Hemmer with Elastic



Makina / Machine :
•Gizli Lastik Makinası
Coverstitch Machine for Attaching Elastic
Rimoldi, Kansai

B	8	10	12	14	17	18	20
L	6	8	10	12	15	16	18
C	M						



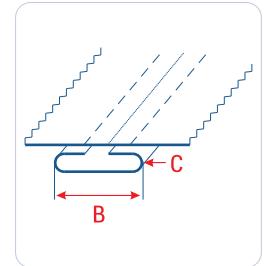
UMA-107

Sütyen Şerit Aparatı

Brassiere Strip Support Attachment



Makina / Machine :
•Çift İğne Kilit Dikiş Makinası
Two Needle Lockstitch Machine



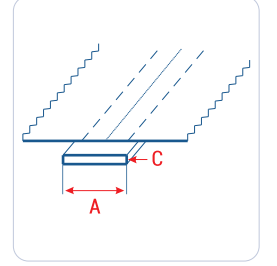
A	18	20	25
B	8	10	12,5
C	M		

* Set içeriği; aparat, kanallı plaka, sürgü kapağı.
Set includes; attachment, special plate, cover.

UMA-109

Şardon Dikme Aparatı

Ready Made Raising Attachment

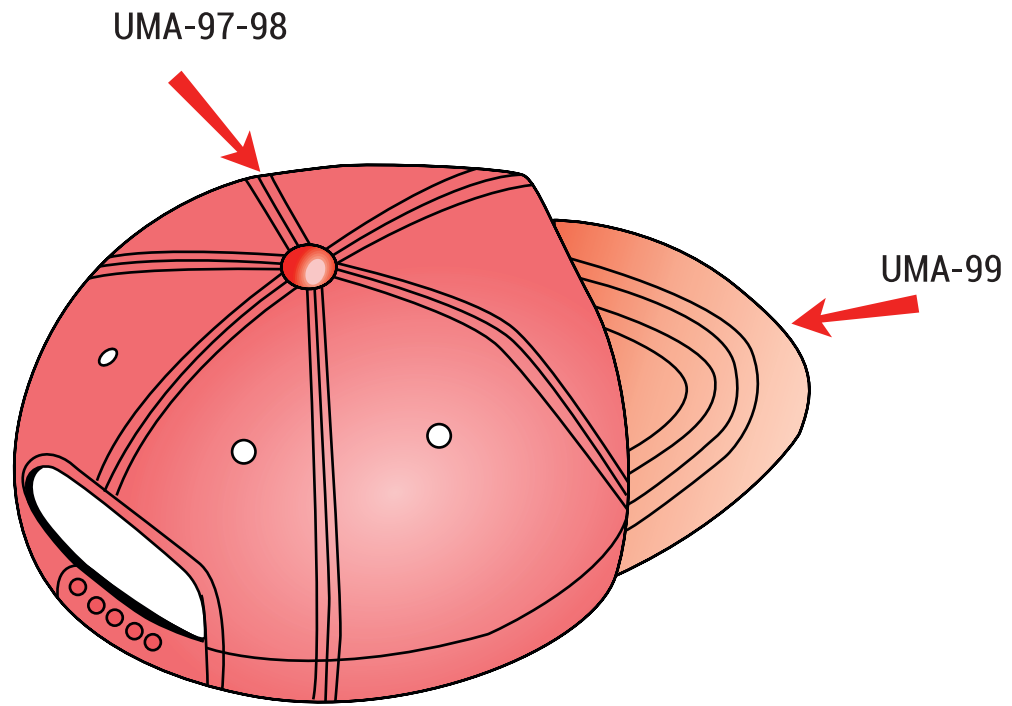


Makina / Machine :
•Çift İğne Kilit Dikiş Makinası
Two Needle Lockstitch Machine

A 8 10

C M

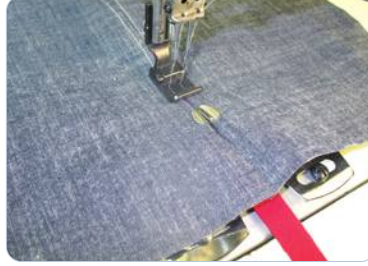
* Set içeriği; aparat, kanallı plaka, sürgü kapağı.
Set includes; attachment, special plate, cover.



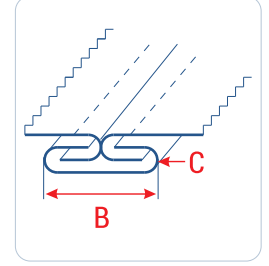
UMA-97

Sarı Şapka Aparatı

Tape Attachment for Cap



Makina / Machine :
•Çift İğne Kilit Dikiş Makinası
Two Needle Lockstitch Machine



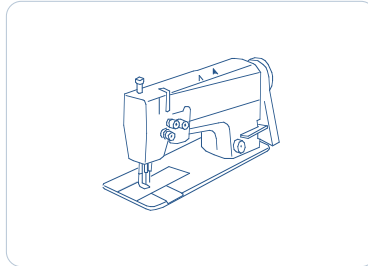
A	28	30	35
B	14	15	17
C	M		

* Set içeriği; aparat, ayak.
Set includes; attachment, presser foot.

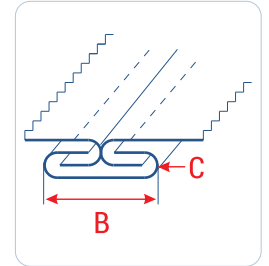
UMA-98

Şapka İç Biye Aparatı

Tape Attachment for Cap



Makina / Machine :
•Çift İğne Kilit Dikiş Makinası
Two Needle Lockstitch Machine



A	25	30
B	12	15
C	M	

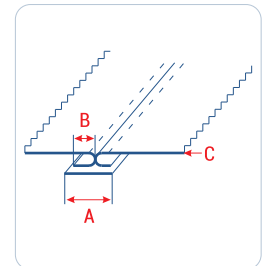
UMA-99

Şapka Terek Arabiye Aparatı

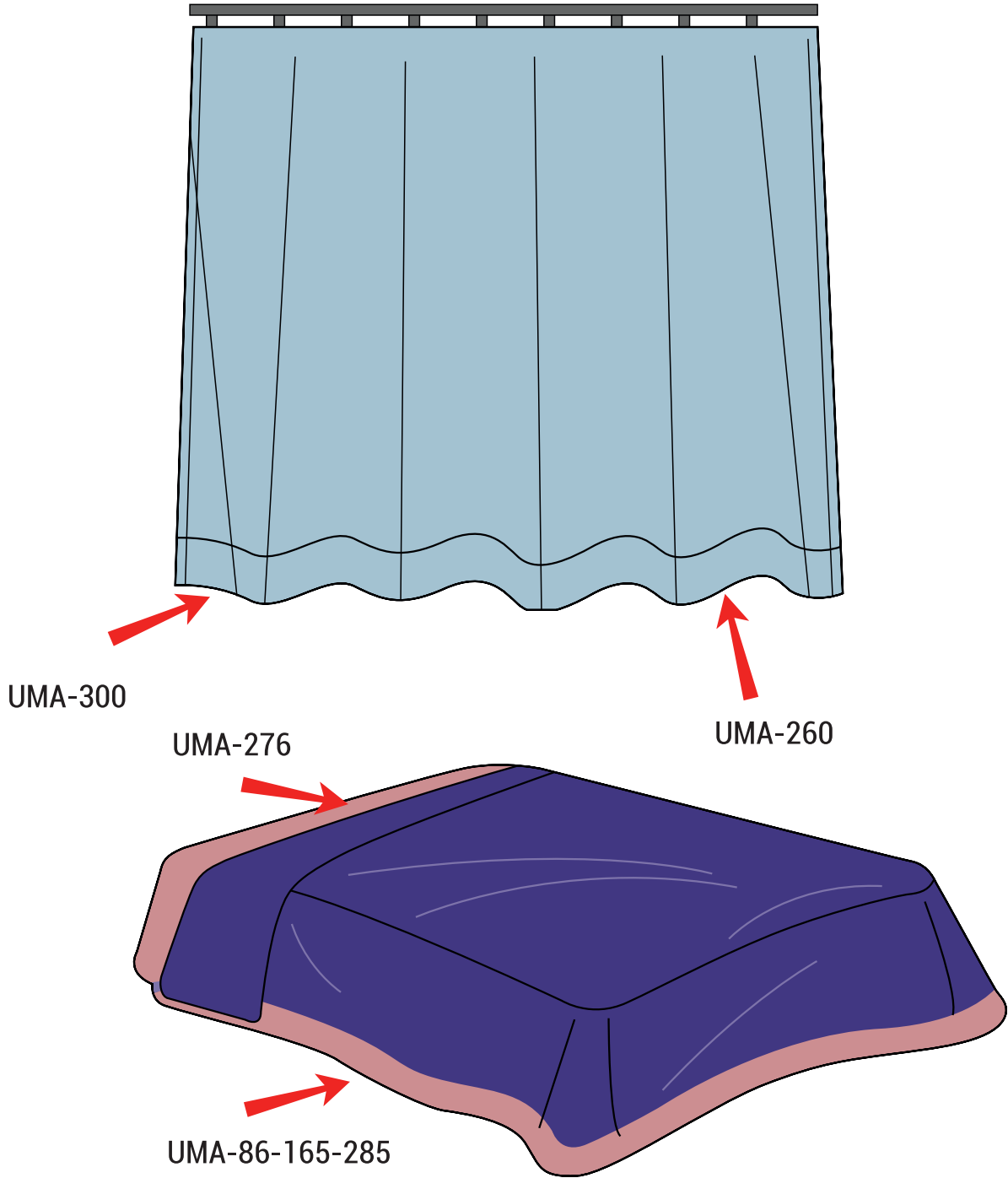
Cap Visor Piping Attachment



Makina / Machine :
•Çift İğne Kilit Dikiş Makinası
Two Needle Lockstitch Machine

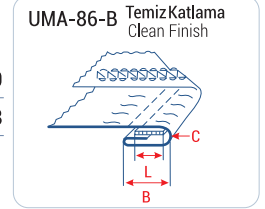
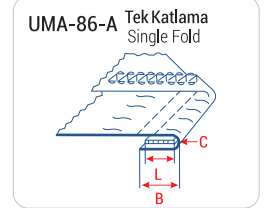
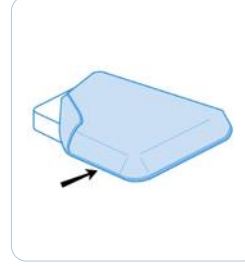


A	15
B	7,5
C	M



UMA-86
Çarşaf Lastik Aparatı
DownTurn Hemmer with Elastic for Sheet

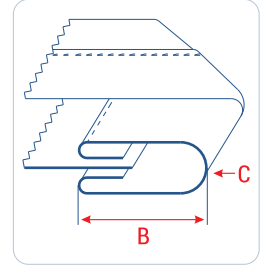

Makina / Machine :
•Reçme Makinası
Coverstitch Machine



B	10	12	14	17	18	20
L	8	10	12	15	16	18
C	M					

UMA-165-D
Nevresim Kenar Biye Aparatı
Tape Binder for Quilt Cover

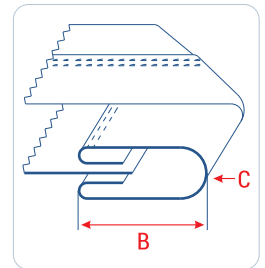

Makina / Machine :
•Düz Makina
Lockstitch Machine



A	60	65	70	75	80	85	90	95	100	110	120	130	150	170	190	210	230	
B	20	22	25	27	30	32	35	38	40	42	45	50	60	70	80	90	100	
C	M																	

UMA-165-C
Nevresim Kenar Biye Aparatı
Tape Binder for Quilt Cover


Makina / Machine :
•Çift İğne
Kilit Dikiş Makinası
Two Needle
Lockstitch Machine

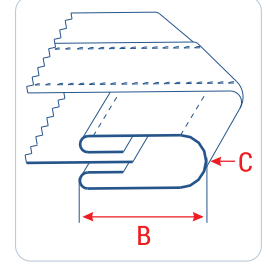
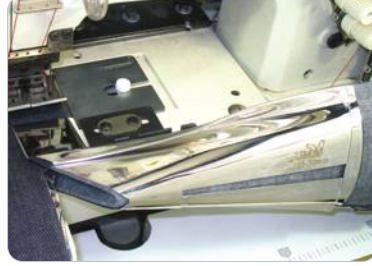


A	60	65	70	75	80	85	90	95	100	110	120	130	150	170	190	210	230	
B	20	22	25	27	30	32	35	38	40	42	45	50	60	70	80	90	100	
C	M																	

UMA-165-K

Nevresim Kenar Biye Aparatı

Tape Binder for Quilt Cover



Makina / Machine :

•Lastik Makinası

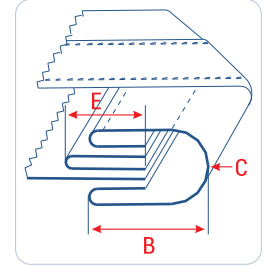
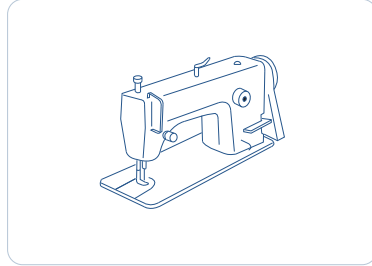
Multi Needle Machine

A	60	65	70	75	80	85	90	95	100	110	120	130	150	170	190	210	230
B	20	22	25	27	30	32	35	38	40	42	45	50	60	70	80	90	100
C	M																

UMA-165-A

Arabiyeli Kenar Biye Aparatı

Tape Binder with Piping for Quilt Cover



Makina / Machine :

•Lastik Makinası

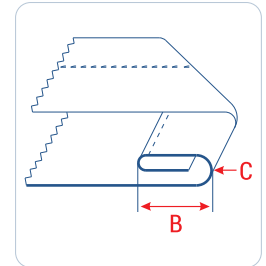
Multi Needle Machine

A	60	65	70	75	80	85	90	95	100	110	120	130	150	170	190	210	230
B	20	22	25	27	30	32	35	38	40	42	45	50	60	70	80	90	100
C	M																
D	20	25	30	35													
E	10	12	15	17													

UMA-169

Kenar Kıvrırma Aparatı

Upturn Hemmer

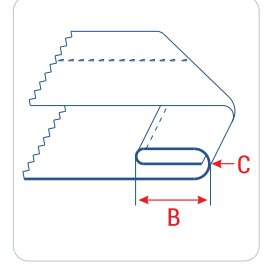


Makina / Machine :

•Düz Makina

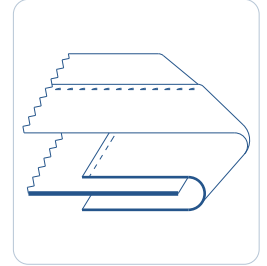
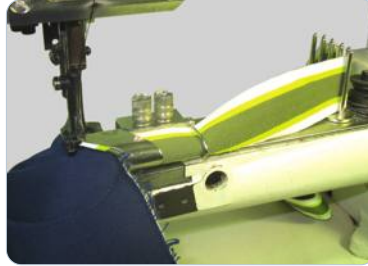
Lockstitch Machine

B	8	10	12	15	17	20	22	25	30	35	40	45
C	M											

UMA-179
Tam Katlama Kenar Kıvrırma Aparatı
Full Fold Upturn Hemmer


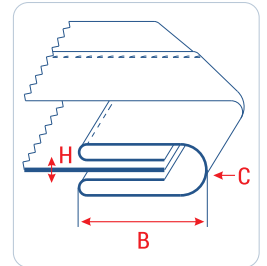
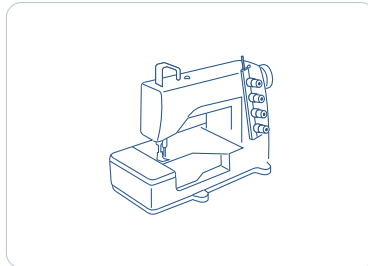
Makina / Machine :
•Düz Makina
Lockstitch Machine

B 10x10 12x12 15x15 20x20 22x22 25x25 30x30 35x35 40x40
C M

UMA-276
Yatak Kenar Biye Aparatı
Raw Edge Binder for Bed


Makina / Machine :
•Yatak Kenar Makinası
Mattress Tape Edge Machiner

A 30 32 35 38 40 42 45

UMA-285
Yorgan Biye Aparatı
Right Angle Binder for Quilt


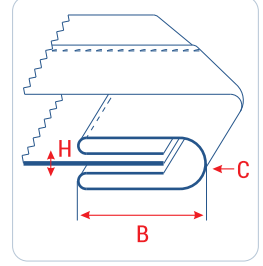
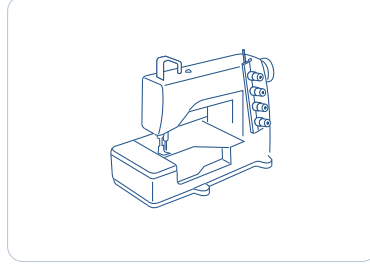
Makina / Machine :
•Bıçaklı Yorgan Makinası
Walking Foot Machine with Trimmer

A 45
B 12
H 7
C M

UMA-287

Yorgan Biye Aparatı

Right Angle Binder for Quilt



Makina / Machine :
•Bıçaklı Yorgan Makinası
Walking Foot Machine with Trimmer

A 40 45

B 12 13

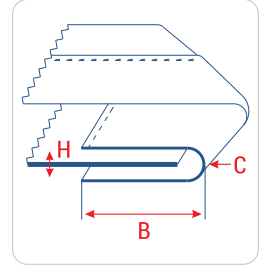
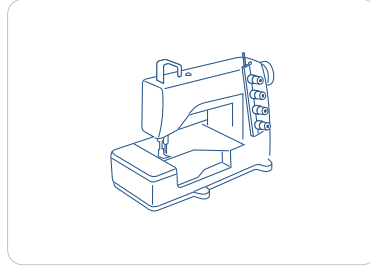
H 7

C M

UMA-287-B

Yorgan Biye Aparatı

Right Angle Binder for Quilt



Makina / Machine :
•Bıçaklı Yorgan Makinası
Walking Foot Machine with Trimmer

A 30 32 35

B 15 16 17

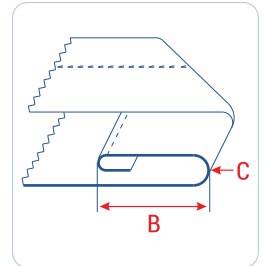
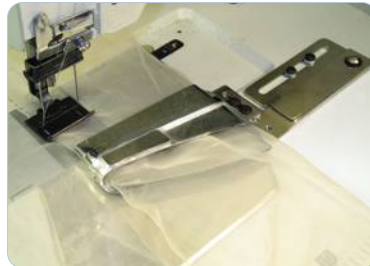
H 7

C M

UMA-300

Kenar Kıvrırma Aparatı

Upturn Hemmer



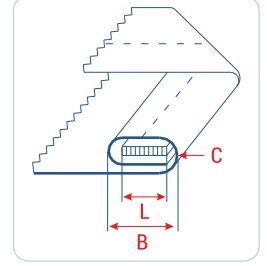
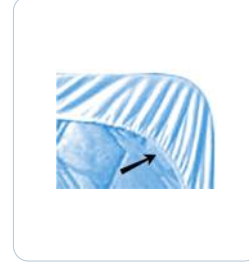
Makina / Machine :
•Düz Makina
Lockstitch Machine
•Çift İğne Kilit Dikiş Makinası
Two Needle Lockstitch Machine
•Lastik Makinası
Multi Needle Machine

A 50 55 60 65 70 75 80 90 95 100 110 120 130 140 150

C M

UMA-310
Lastikli Kenar Kıvrırma Aparatı
Up Turn Hemmer with Elastic

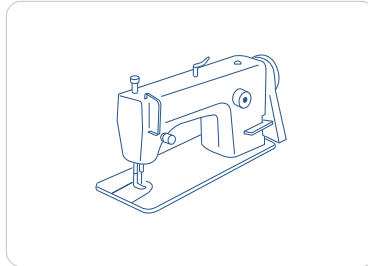

Makina / Machine :
 •Düz Makina
 Lockstitch Machine



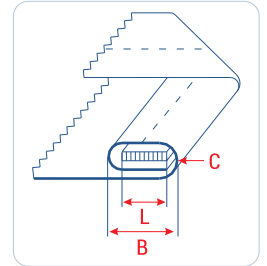
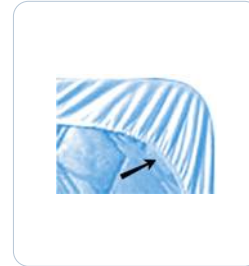
B 10 12

L 8 10

C M

UMA-310-B
Fitted Lastik Aparatı
Fitted Up Turn Hemmer with Elastic


Makina / Machine :
 •Rımac Sistem
 Rimac System



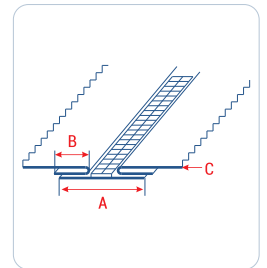
B 10 12

L 8 10

C M

UMA-319
Fermuar Takma Aparatı
Zipper Attachment


Makina / Machine :
 •Çift İğne Zincir Dikiş Makinası
 Two Needle Chainstitch Machine



A 20 25 30 35

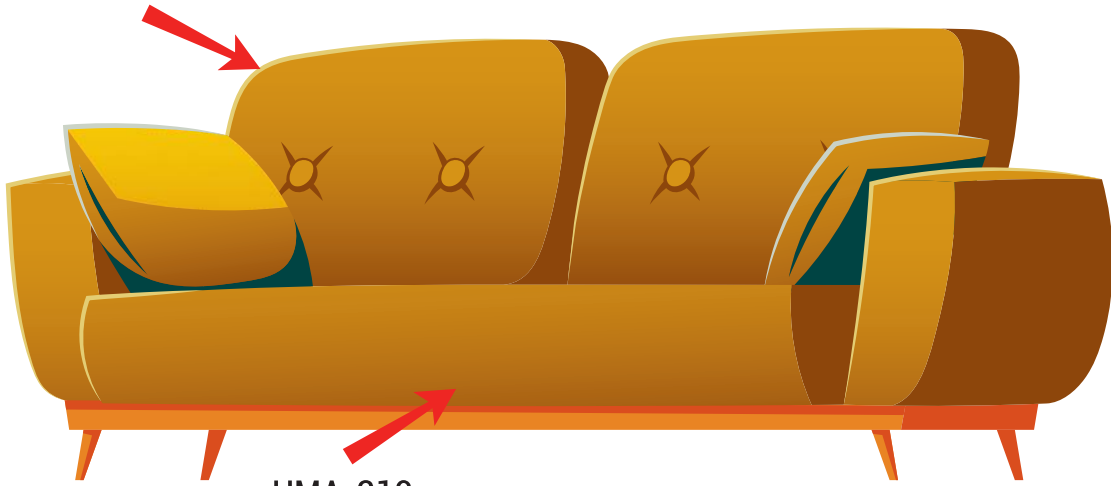
B 12

C H



UMA-272-275-288

UMA-245

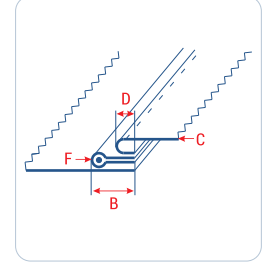
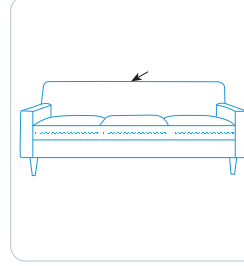
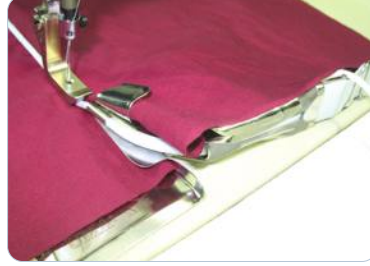


UMA-319

UMA-196

Fitilli Arabiye Aparatı

Piping Attachment with Cord



Makina / Machine :
•Düz Makina
Lockstitch Machine

A 25 30 35

B 12,5 15 17,5

C M H

D 10

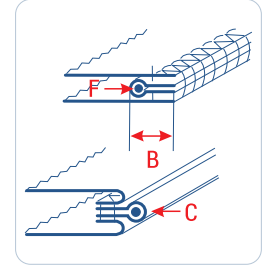
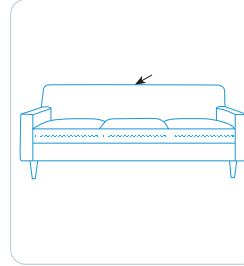
F 2 3 4 5 6

* Fitil kanallı ayak ile kullanılır.
Piping foot must be used.

UMA-245

Fitilli Arabiye Aparatı

Piping Attachment with Cord



Makina / Machine :
•Düz Makina
Lockstitch Machine

A 20 25 30 35

B 10 12,5 15 17,5

C L M H

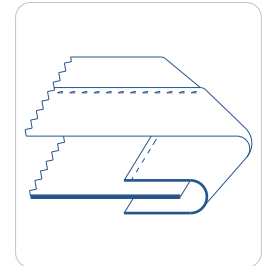
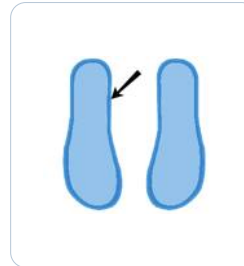
F 2 3 4 5 6

* Fitil kanallı ayak ile kullanılır.
Piping foot must be used.

UMA-275

Şerit Aparatı

Raw Edge Binder



Makina / Machine :
•Çift Pabuç Makina
Walking Foot Lockstitch Machine

A 12 15 16 18 20 22 25 28

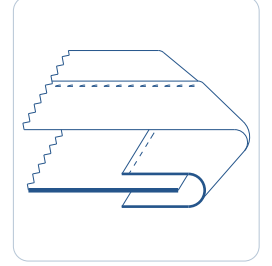
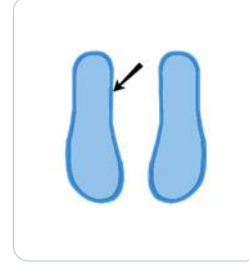
UMA-275-B

Sert - Kalın Şerit Biye Aparatı

Raw Edge Binder for Heavy Tape



Makina / Machine :
•Çift Pabuç Makina
Walking Foot Lockstitch Machine



A 12 15 16 18 20 22 25 28

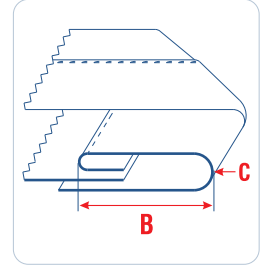
UMA-283

Biye Tek Kıvrırma Aparatı

Single Fold Raw Edge Tape Binder



Makina / Machine :
•Çift Pabuç Makina
Walking Foot Lockstitch Machine



A 25 30 35

B 8 10 12

C M H

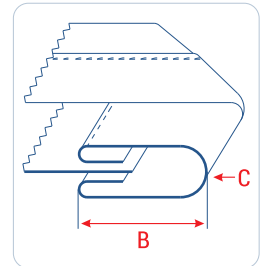
UMA-288

Çift Kıvrırma Biye Aparatı

Double Fold Raw Edge Tape Binder



Makina / Machine :
•Çift Pabuç Makina
Walking Foot Lockstitch Machine



A 25 28 30 32 35 38 40 45

B 6 7 8 9 10 11 12 13

C M H

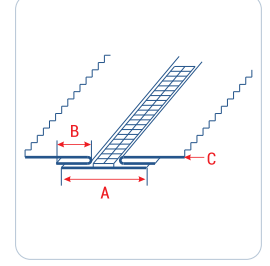
UMA-319

Fermuar Takma Aparatı

Zipper Attachment



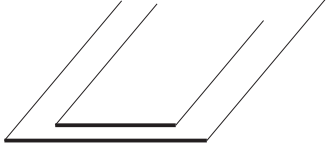
Makina / Machine :
•Çift İğne Zincir Dikiş Makinası
Two Needle Chainstitch Machine



A	20	25	30	35
B	12			
C	H			

UMA-500-P

Kumaşa Tela Yapıştırma Aparatı
Interlining Attachment



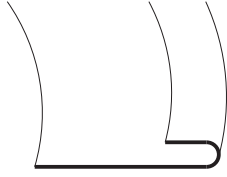
UMA-501-P

Tek Kenar Kıvrırma Aparatı
Up Turn Hemmer



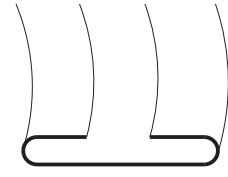
UMA-502-P

Kavisli Tek Kenar Kıvrırma Aparatı
Curved Up Turn Hemmer



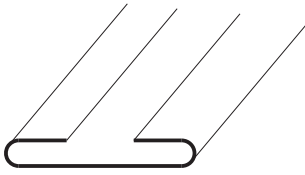
UMA-503-P

Kavisli Sağ-Sol Kenar Kıvrırma Aparatı
Curved Up Turn Hemmer



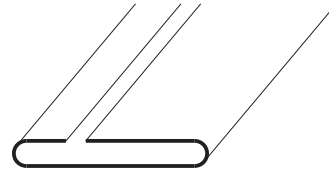
UMA-504-P

Sağ-Sol Kenar Kıvrırma Aparatı
Up Turn Hemmer



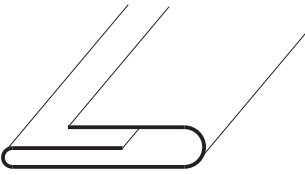
UMA-505-P

Tek Kenar Uzun Sağ-Sol
Kenar Kıvrırma Aparatı
Up Turn Hemmer



UMA-506-P

Sağ-Sol Bindirmeli Kıvrırma Aparatı
Up Turn Hemmer



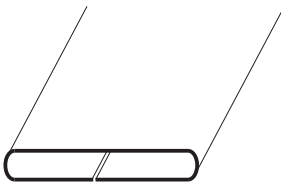
UMA-507-P

Sağ-Sol Ters Kenar Kıvrırma Aparatı
Down Turn Hemmer



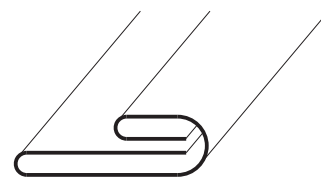
UMA-508-P

Sağ-Sol Ters Tam Kenar Kıvrırma Aparatı
Down Turn Hemmer



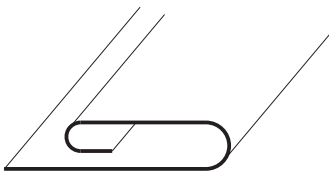
UMA-509-P

Tek Taraf Uzun Dörde Katlama Aparatı
Double Turn Hemmer



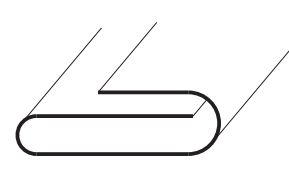
UMA-510-P

Altı Açık Üçe Katlama Aparatı
Up Turn Hemmer



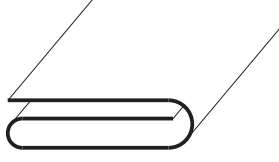
UMA-511-P

Tek Taraf Uzun Üçe Katlama Aparatı
Up Turn Hemmer



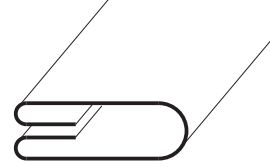
UMA-512-P

Üçe Tam Katlama Aparatı
Up Turn Hemmer



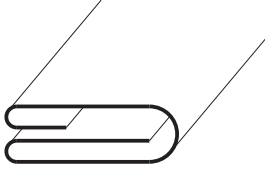
UMA-513-P

Dörde Katlama Pres Aparatı
Double Turn Hemmer



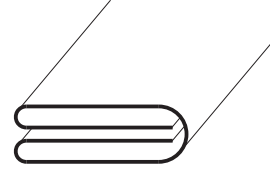
UMA-514-P

Tek Tarafı Tam Dörde Katlama Aparatı
Double Turn Hemmer



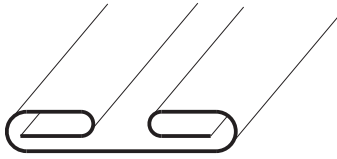
UMA-515-P

Dörde Tam Katlama Pres Aparatı
Double Turn Hemmer



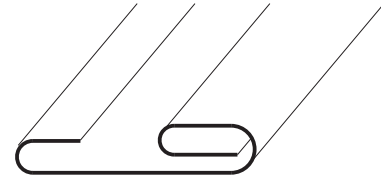
UMA-516-P

Dörde Tam Katlama Pres Aparatı
Double Turn Hemmer



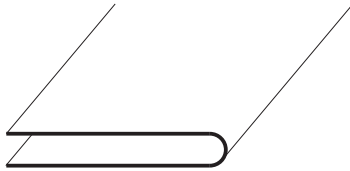
UMA-517-P

Tek Tarafı Temiz Katlamalı Pres Aparatı
Up Turn Hemmer



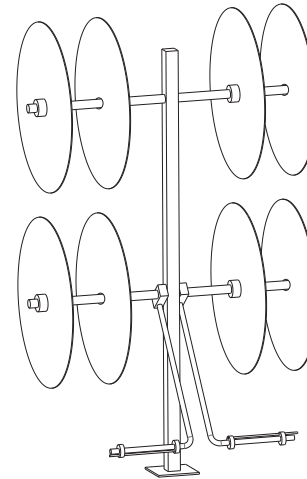
UMA-518-P

İkiye Katlama Pres Aparatı
Up Turn Hemmer



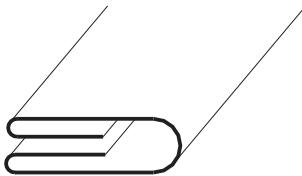
TAB-07

Tela Pres Çardağı
Tape Rack for Fusing Machine



UMA-206-S

Apartura Biye Aparatı
Pneumatic Sleeve Placket Folder Set





TEKSTİL MAKİNALARI VE İNŞAAT
SANAYİ TİCARET LİMİTED ŞİRKETİ

Merkez : Şht. Mustafa Yeşil Cad. No:15
Head Office Gaziosmanpaşa, İstanbul, Türkiye
Tel : +90 212 477 21 58

Fabrika : Habipler Mh. 2720/1 Sk. No: 15
Factory Sultangazi, İstanbul, Türkiye
Tel : +90 212 595 43 65

info@ucarmakina.com.tr
www.ucarmakina.com.tr